

UKIAH PUBLIC HEALTH - ACCESSIBLE EMPLOYEE ENTRANCE

PROJECT DATA

BUILDING: 56 - PUBLIC HEALTH & MENTAL HEALTH
48,450 SF
BUILDING TYPE: II-A - FULLY SPRINKLERED
AREA OF WORK: BACK EXIT AND WALKWAY
PROJECT TYPE: ACCESSIBILITY UPGRADE

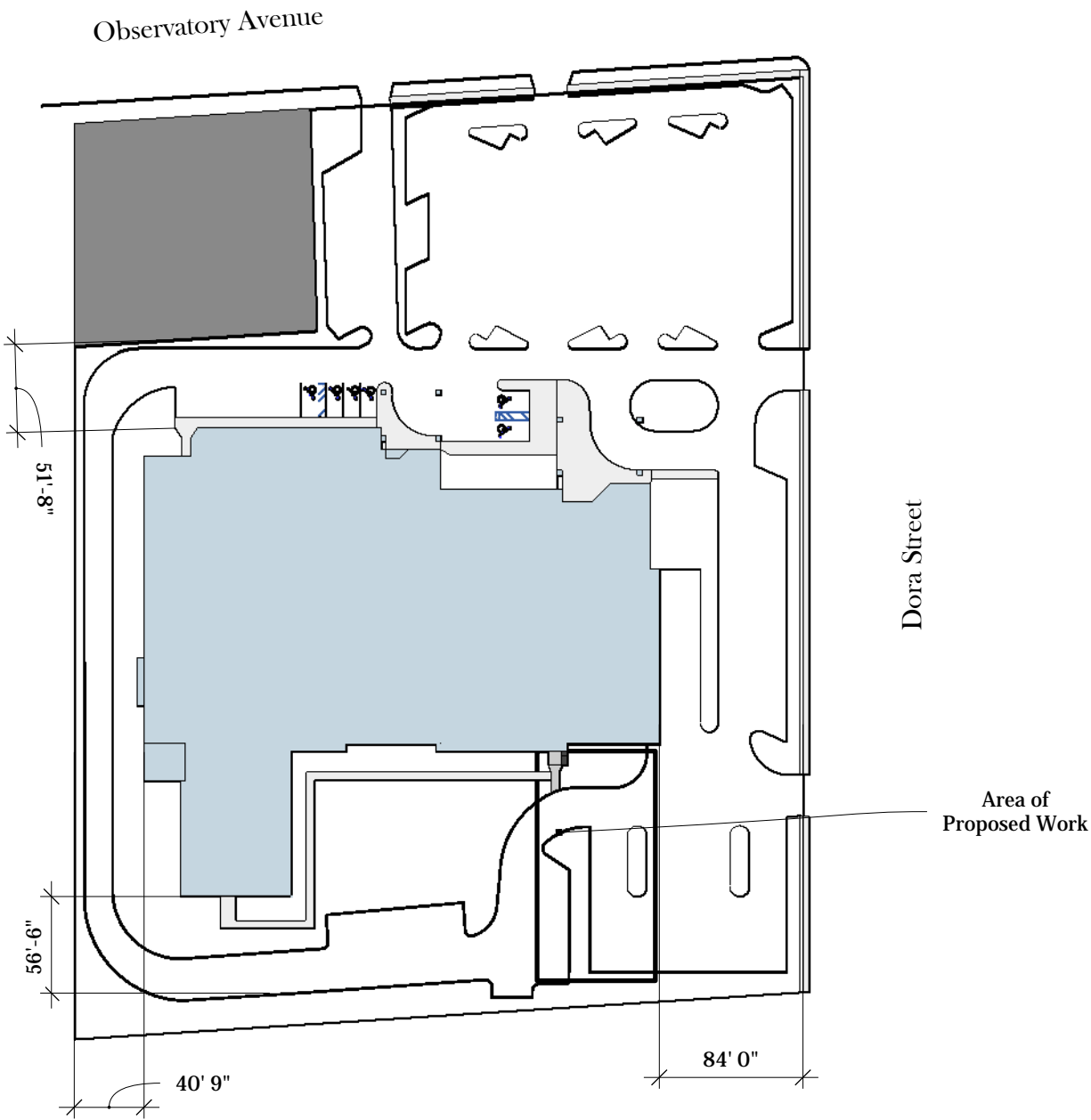
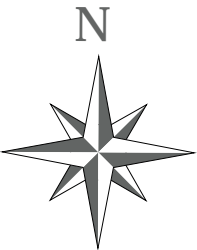
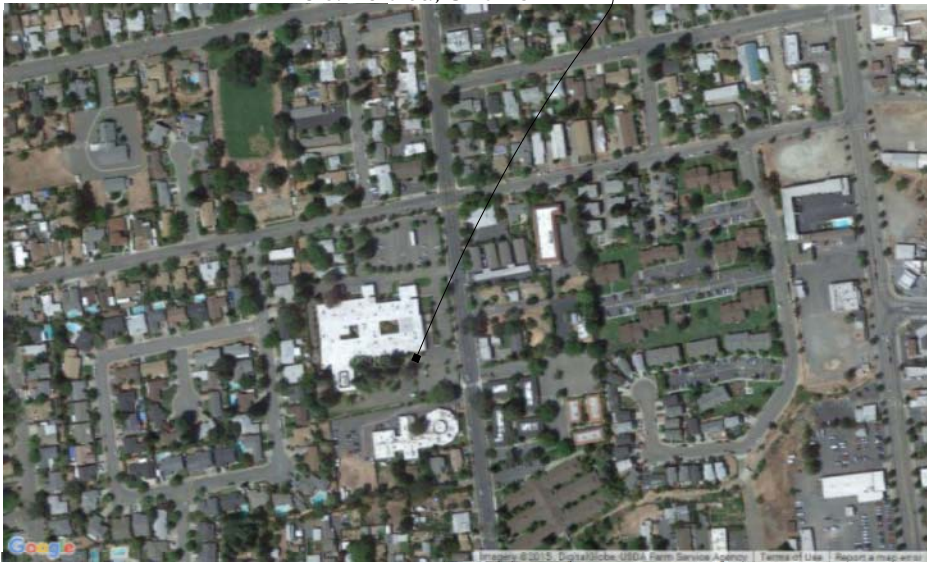
APPLICABLE CODES (CBC)

2013 CALIFORNIA BUILDING CODE
2013 CALIFORNIA MECHANICAL CODE
2013 CALIFORNIA ELECTRICAL CODE
2013 CALIFORNIA PLUMBING CODE
2013 CALIFORNIA FIRE CODE
2013 CALIFORNIA ENERGY CODE
2013 CALIFORNIA GREEN CODE

SUMMARY OF WORK

1. PROVIDE NEW ACCESSIBLE WALKWAY TO EXISTING EMPLOYEE ENTRANCE
2. PROVIDE TWO (2) NEW ACCESSIBLE PARKING STALLS
3. PROVIDE NEW LOW ENERGY DOOR OPERATOR AND CARD READER FOR EXISTING EMPLOYEE ENTRANCE DOOR.

LOCATION MAP
1120 S. Dora St., Ukiah CA



PLOT PLAN

Ukiah Public Health
Accessible Employee Entrance



County of Mendocino
Executive Office
Facilities and Fleet Division

851 Low Gap Road
Ukiah, CA 95482
707-234-6068

Project No.	CI774	Submittal Date:	8/10/2016
PRF/Bid No.	42-16	Submittal Type:	Permit
Project Manager: Doug Anderson			
Bid & Contract Documents		Issued for Bid September 14, 2016	



1 SIGN DETAIL

DEMOLITION NOTES:

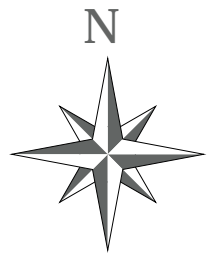
1. Before starting work, secure approval of your construction site storm water erosion and sediment contro plan.
All BMP's must be in place prior to starting work.
2. Provide clean edges for all concrete and asphalt demolition, demo to construction joints or sawcut as required.
3. Remove and stockpile topsoil for finish grading.
4. Remove and properly dispose of all demolished materials.

Existing wing walls to remain

Demo existing curbs and walks as required to accomodate new work

Saw cut existing curb and asphalt to provide smooth transition from (E) paving to (N) curb ramp landing.

Sawcut and remove asphalt paving as required for Accessible parking stalls



DEMOLITION PLAN

County of Mendocino

Executive Office - Facilities and Fleet Division

Ukiah Public Health - Accessible Employee Entrance

REVISIONS

	MM/DD/YY	REMARKS
1	__/__/__	...
2	__/__/__	...
3	__/__/__	...
4	__/__/__	...
5	__/__/__	...

A 01

SITE PLAN NOTES

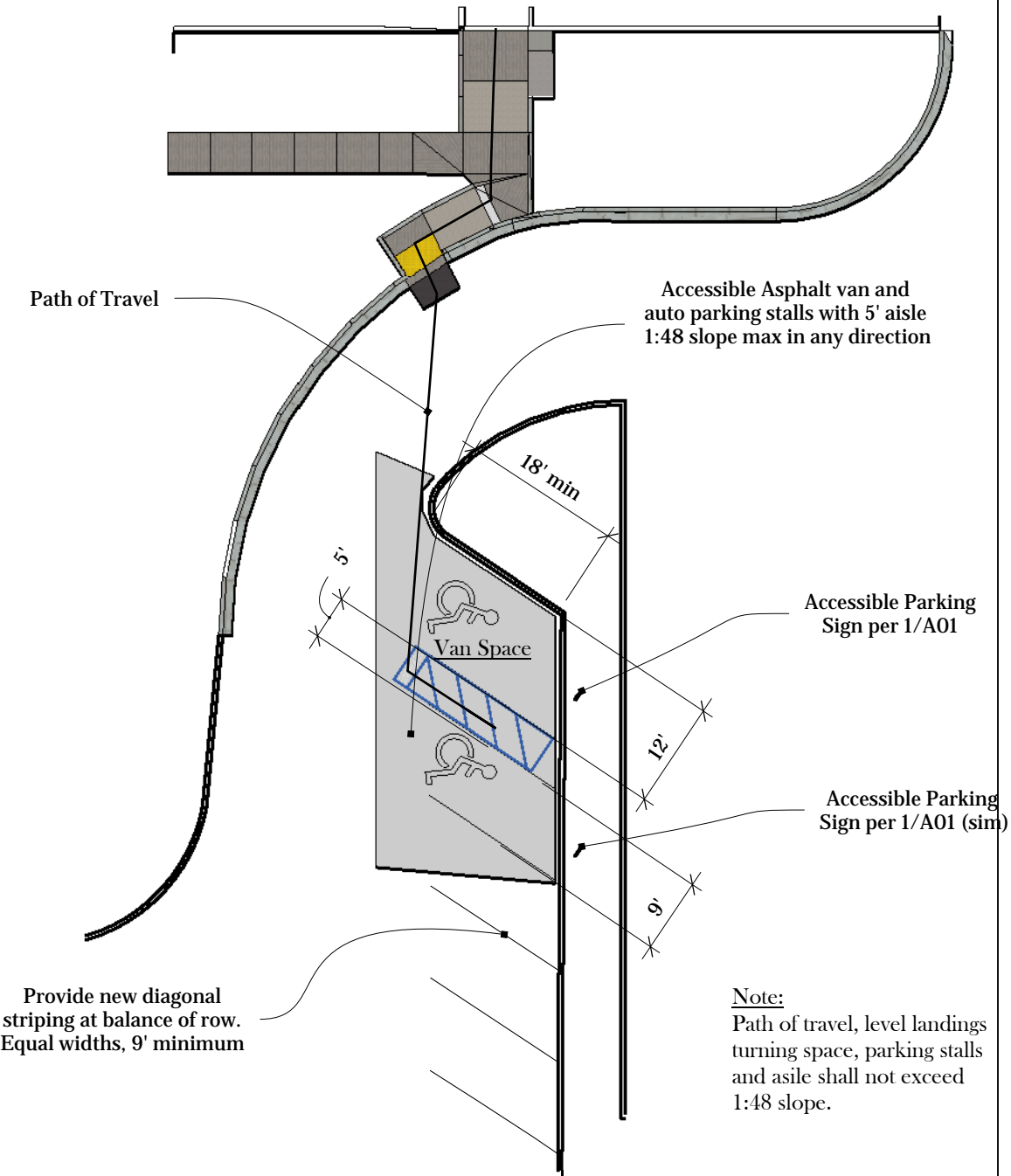
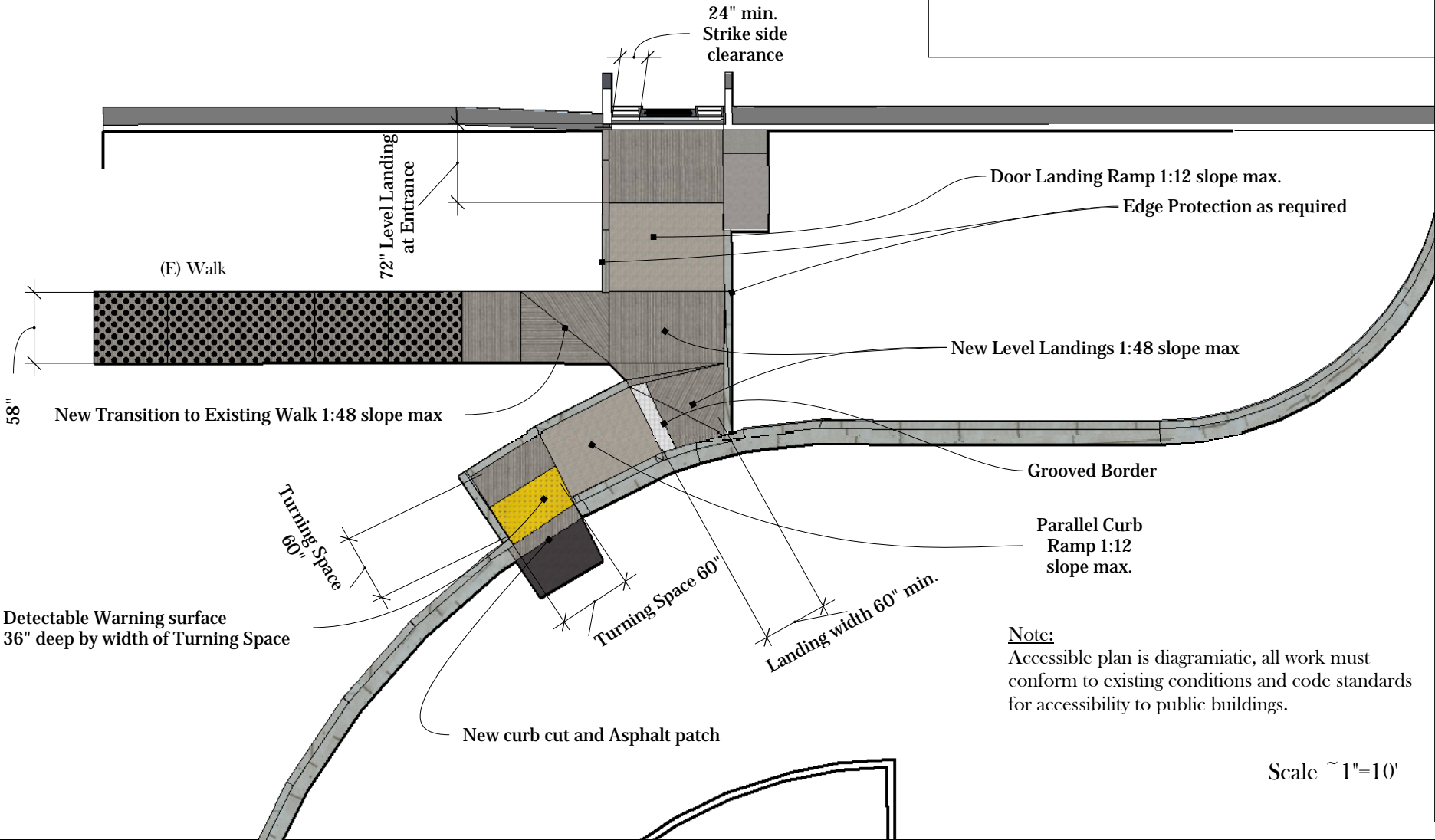
New ADA Compliant Parking and Walk per 2013 CBC, including:

- 1. Provide new paving and striping for new diagonal ADA car and van parking spaces including access aisle and signage per 11B-502 at the locations shown.
- 2. Provide Curb cut and new concrete parallel curb ramp per 11B-406.3 & 406.5 including slopes, landings, grooved border and detectable warning at location shown, dimensions as noted.
- 3. Provide new concrete door landing, door landing ramp and level landings per 11B-405 including slopes, landings, edge protection and change in direction to adjoin with curb ramp noted above.
- 4. Provide a smooth transition to connect to existing site walkway.
- 5. Provide new threshold per 11B-404.2.5 at (E) 3'-8" door.
- 6. Backfill all new and existing curbs and walks with stockpiled topsoil within 1" of concrete grade, blend to existing landscape grade.

PAVING SCHEDULE

Asphalt Paving:
3" Hot Mix Asphalt over
Existing AB compact to 95%

Concrete Walk:
4" Cement Concrete over
6" New or Existing AB
Compact to 95%



SITE PLAN

County of Mendocino

Executive Office - Facilities and Fleet Division

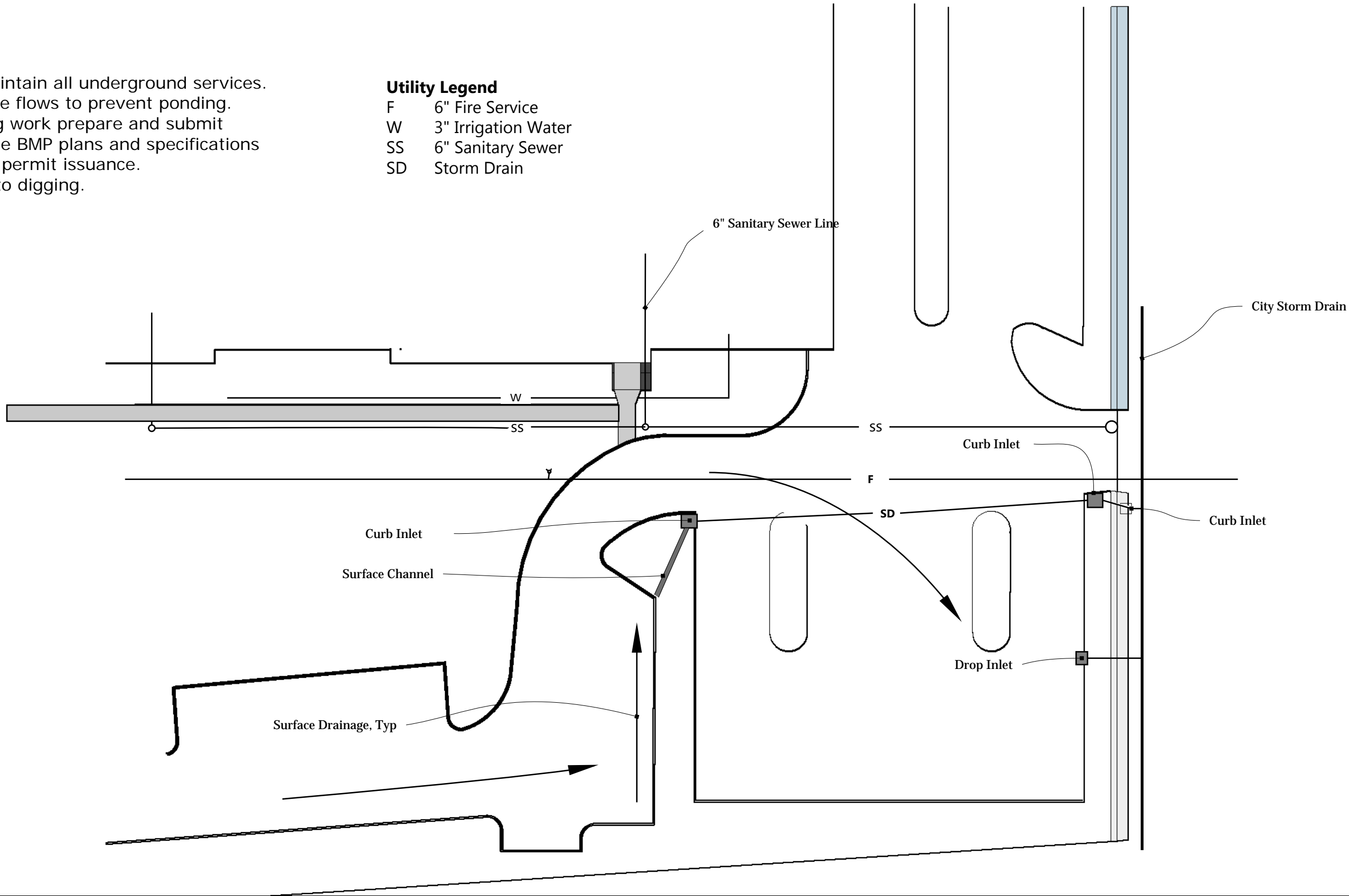
Ukiah Public Health - Accessible Employee Entrance

REVISIONS		
	MM/DD/YY	REMARKS
1	__/__/__	...
2	__/__/__	...
3	__/__/__	...
4	__/__/__	...
5	__/__/__	...

A 02

Notes:
Protect and maintain all underground services.
Maintain surface flows to prevent ponding.
Prior to starting work prepare and submit
construction site BMP plans and specifications
as required for permit issuance.
Call USA prior to digging.

- Utility Legend**
- F 6" Fire Service
 - W 3" Irrigation Water
 - SS 6" Sanitary Sewer
 - SD Storm Drain

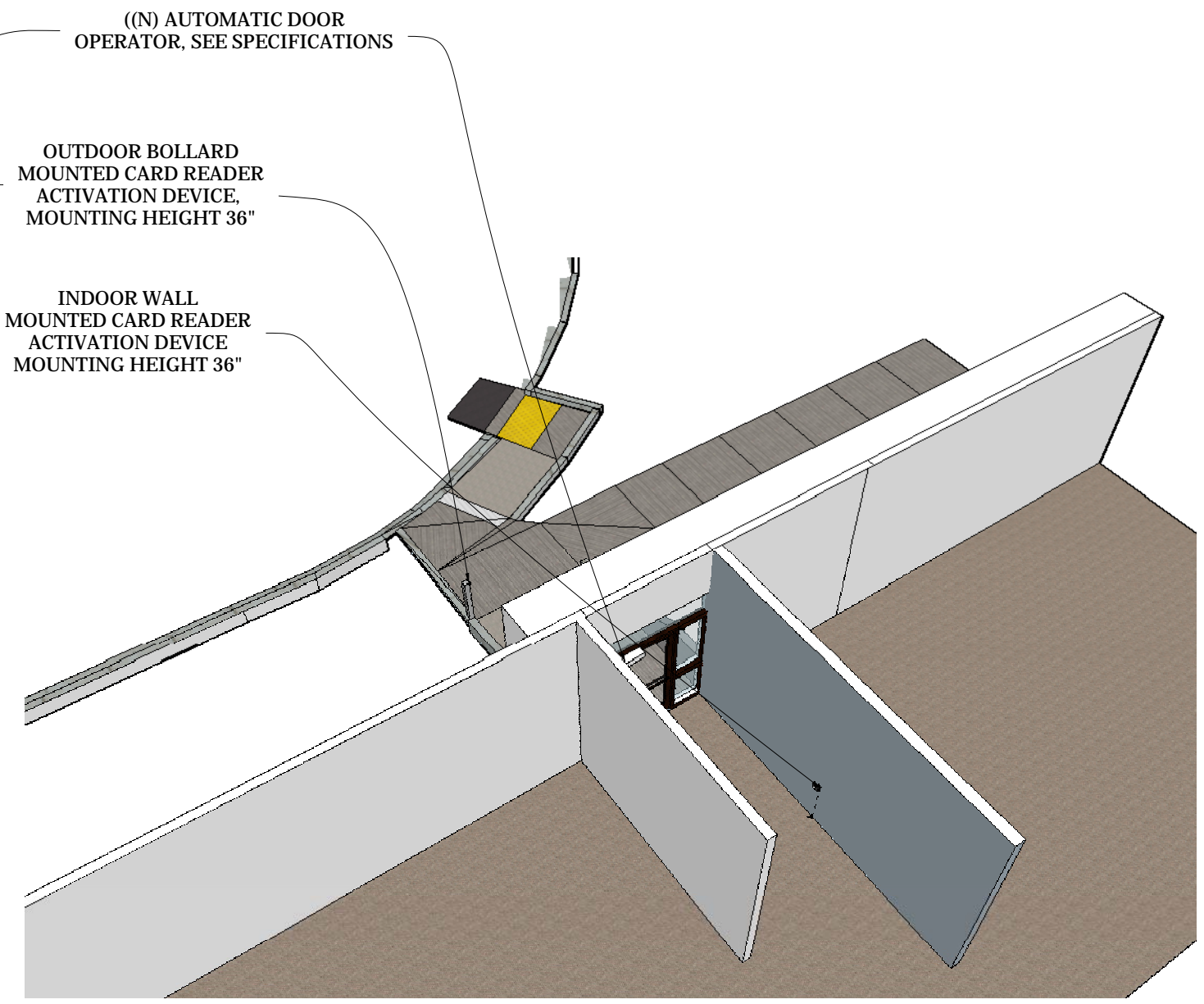
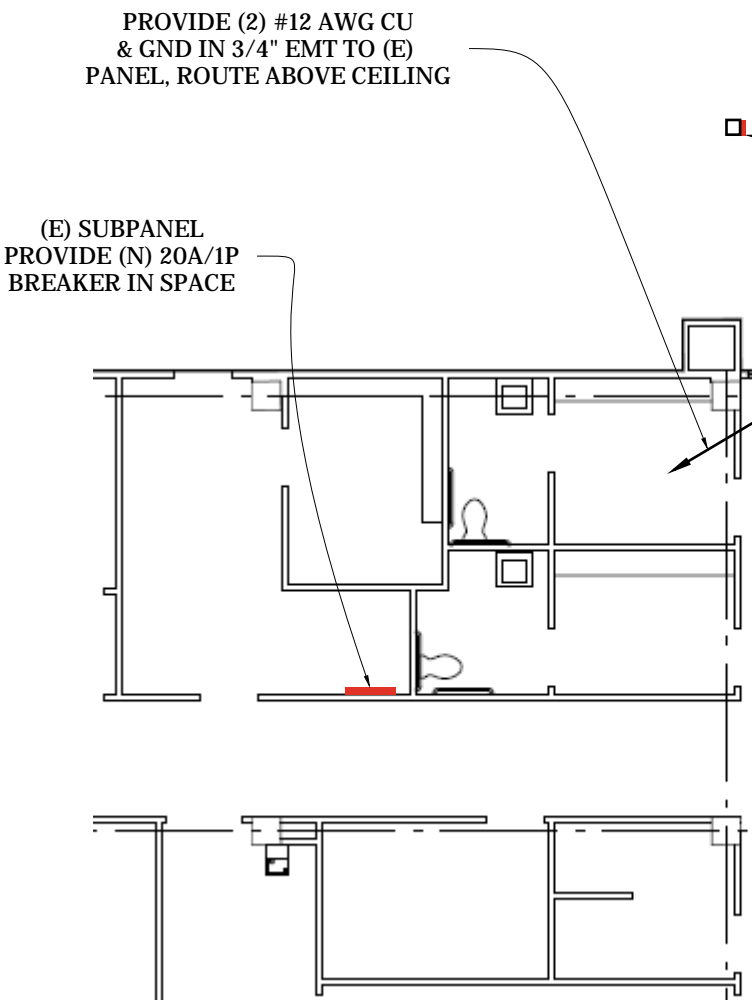


EXISTING UTILITY AND
STORM WATER DRAINAGE PLAN

County of Mendocino
Executive Office - Facilities and Fleet Division

Ukiah Public Health - Accessible Employee Entrance

REVISIONS		
	MM/DD/YY	REMARKS
1	__/__/__	...
2	__/__/__	...
3	__/__/__	...
4	__/__/__	...
5	__/__/__	...



1 Electrical Floor Plan
NTS

NOTE: ELECTRICAL CONTRACTOR SHALL PROVIDE 115V 60 HZ 1 PHASE, 15A DEDICATED CIRCUIT FOR THE DOOR HEADER, AND TWO CONDUCTOR 18 AWG N.E.C. CLASS II LOW VOLTAGE WIRE BETWEEN THE DOOR HEADER AND CARD READER ACTIVATION DEVICES. INTERFACE DOOR OPERATOR ACTIVATION WITH EXISTING ELECTRONIC STRIKE OPERATION AT NEW CARD READERS. CARD READER SHALL BE IDENTIV 8110 TS MIGRATION READER COMPATIBLE WITH EXISTING HIRSCH SECURITY SYSTEM. NO SUBSTITUTIONS.

2 Electrical Schematic
NTS