

**FINAL CLOSURE AND PHASE 1 CORRECTIVE ACTION**  
**SOLID WASTE FACILITY PERMIT NO. 23-AA-0003**

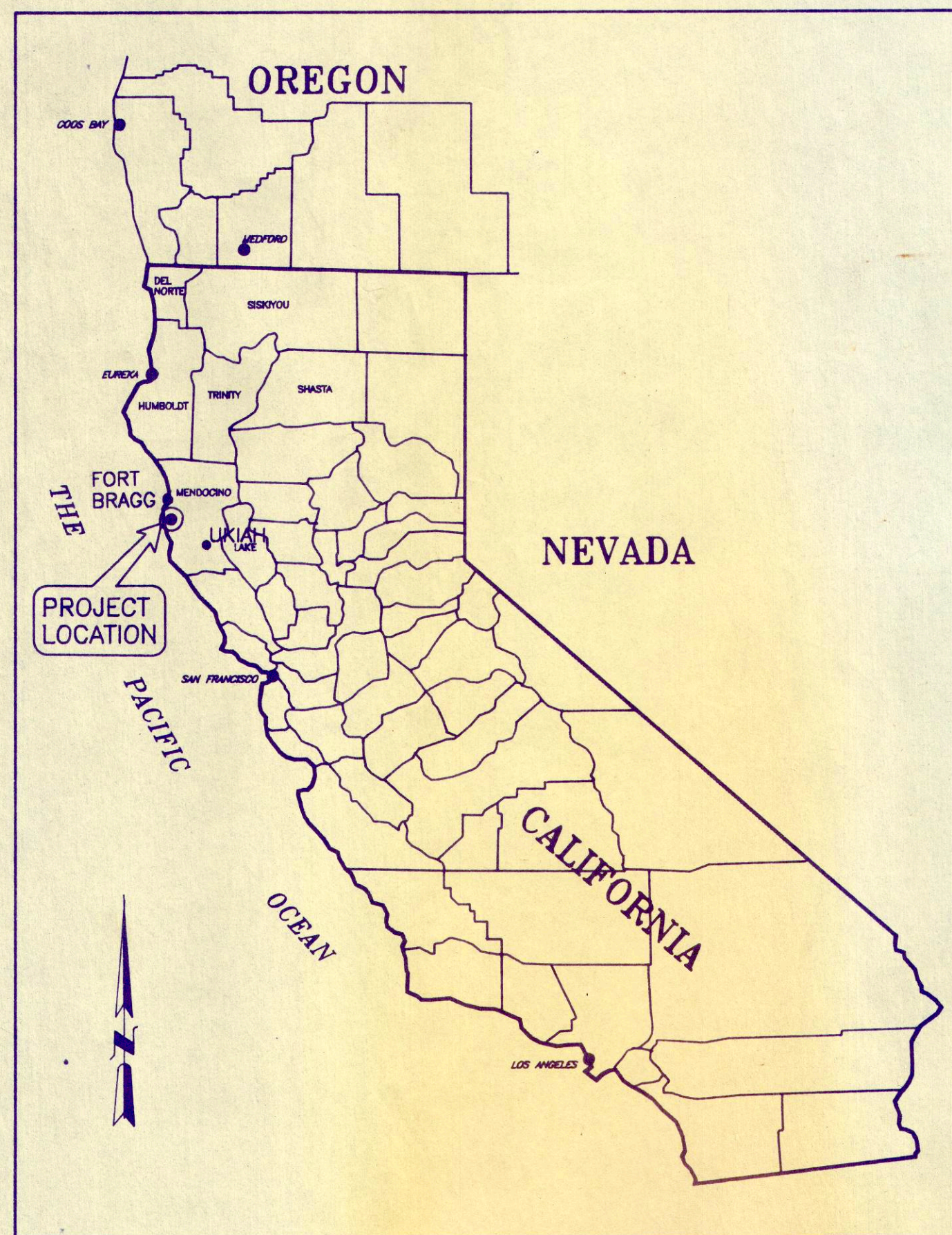
## PREPARED BY

The logo for the Seattle-Harbor News Network (SHN) is displayed in a large, bold, blue font. The letters 'S', 'H', and 'N' are stylized with horizontal lines running through them, giving it a modern, digital appearance.

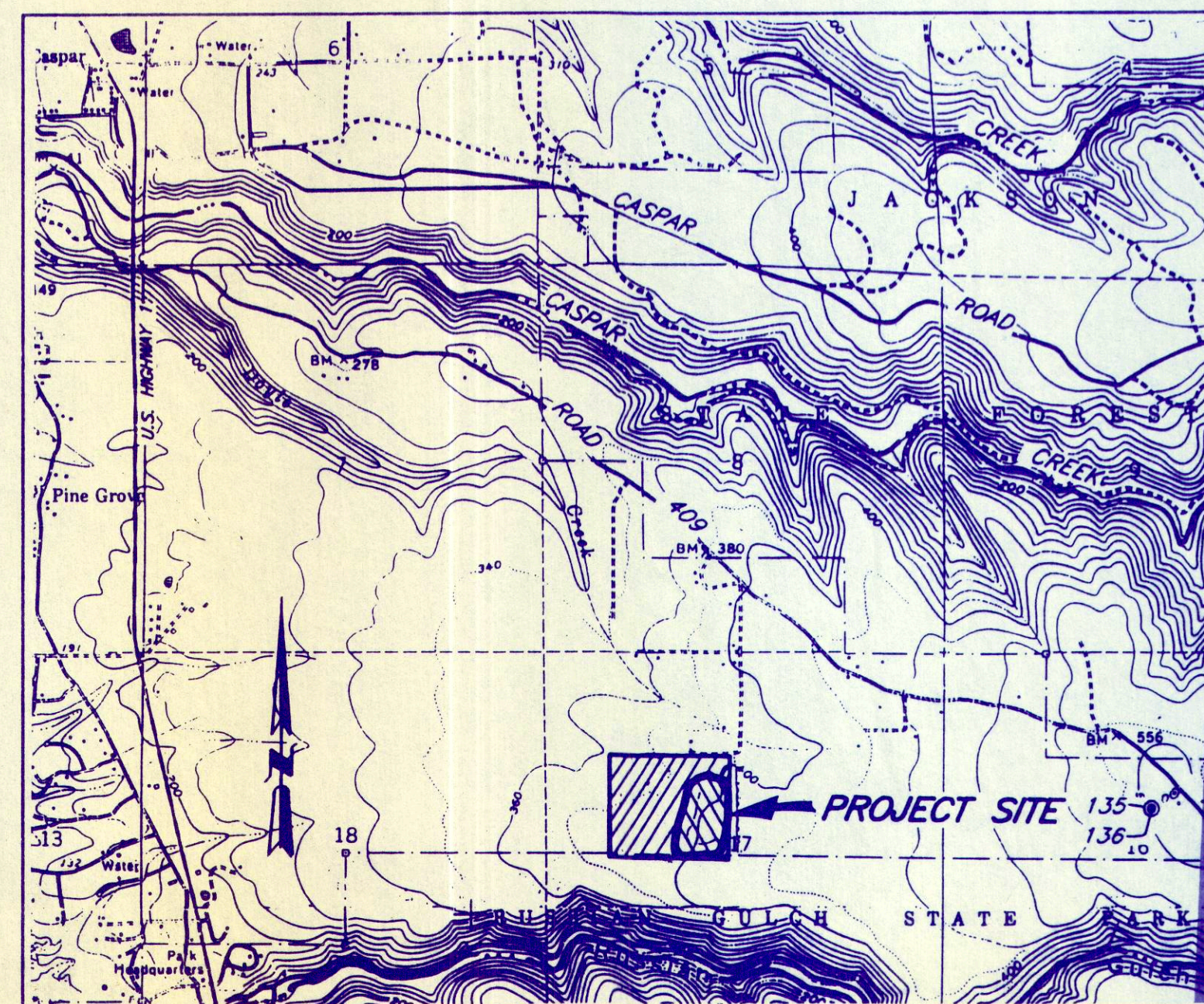
# JUNE, 1994

## INDEX OF DRAWINGS

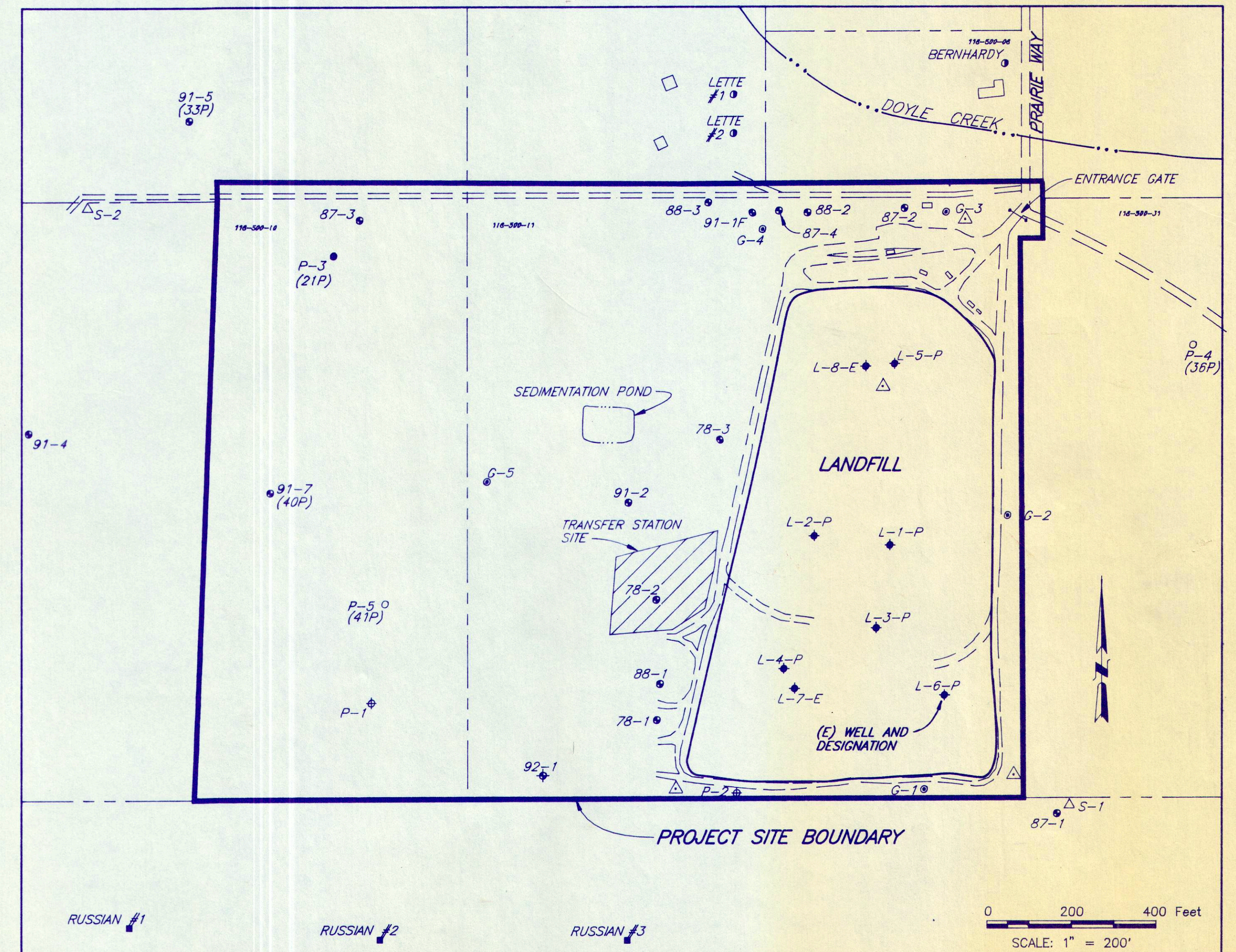
1. COVER SHEET
2. SITE PLAN
3. PROPOSED FINAL CONFIGURATION
4. LEACHATE COLLECTION AND GAS VENTING SYSTEMS
5. DRAINAGE AND EROSION CONTROL SECTIONS  
AND DETAILS
6. LANDFILL GAS SYSTEM AND LINER  
PENETRATION DETAILS
7. LEACHATE CONTROL SYSTEM DETAILS




## LOCATION MAP



### VICINITY MAP



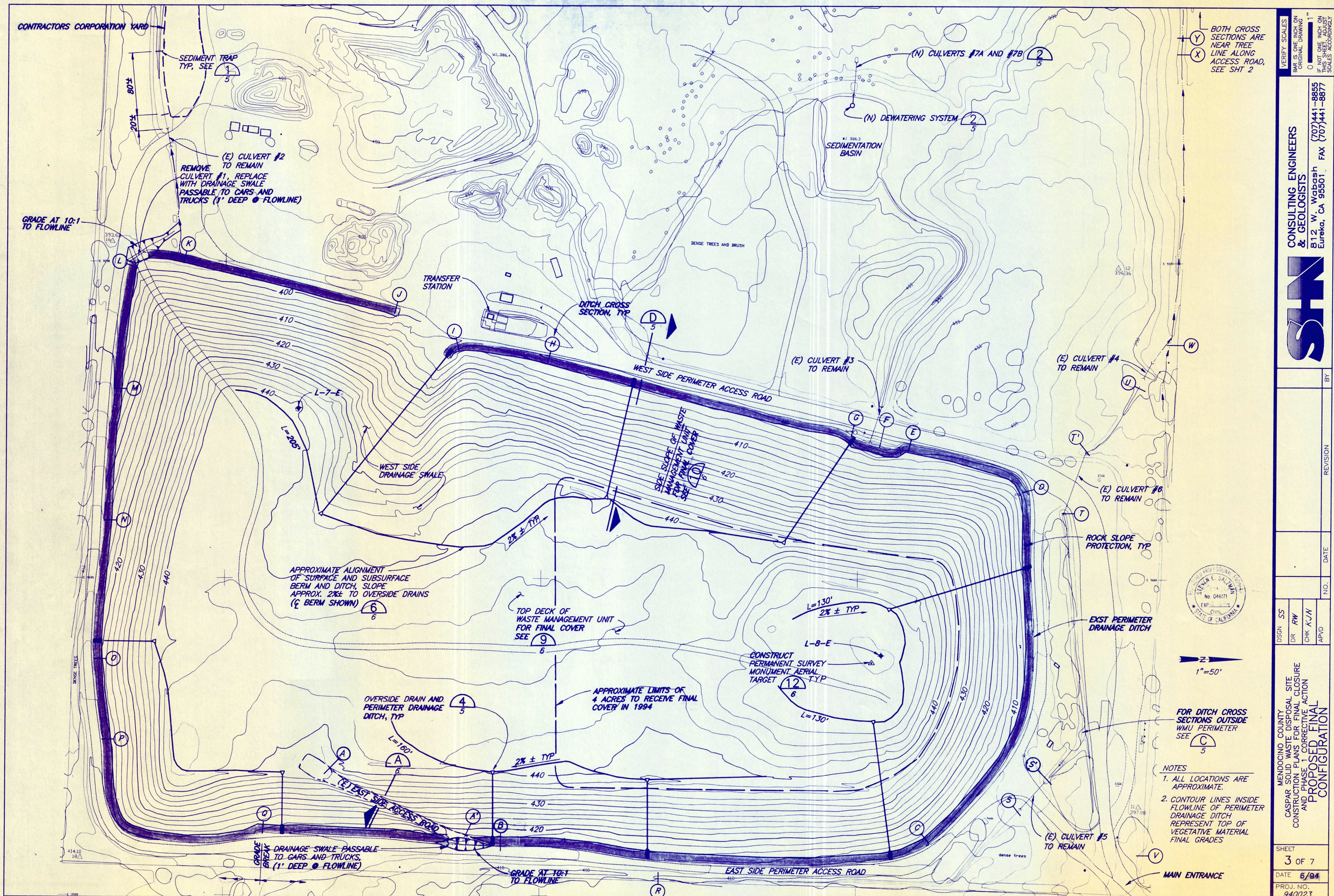
## SITE MAP

REMEDIATION COUNTY CASPAR SOLID WASTE DISPOSAL SITE CONSTRUCTION PLANS FOR FINAL CLOSURE AND PHASE 1 CORRECTIVE ACTION  COVER SHEET	SHEET	1 OF 7	DATE	6/94	PROJ. NO.	940023
	DR	LU/RW	CHK	K/JN	APVD	
	DATE	SS				
	NO.	DATE	REVISION	BY		
	 CONSULTING ENGINEERS & GEOLOGISTS 812 W. Wabash Eureka, CA 95501 FAX (707) 441-8877 (707) 441-8855					










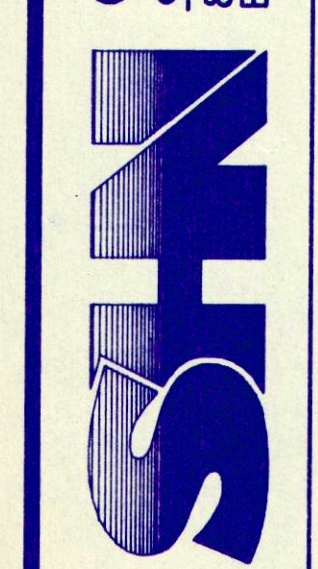
**VERIFY SCALES**

BAR IS ONE INCH ON ORIGINAL DRAWING

0  1"

IF NOT ONE INCH ON THIS SHEET, ADJUST SCALES ACCORDINGLY

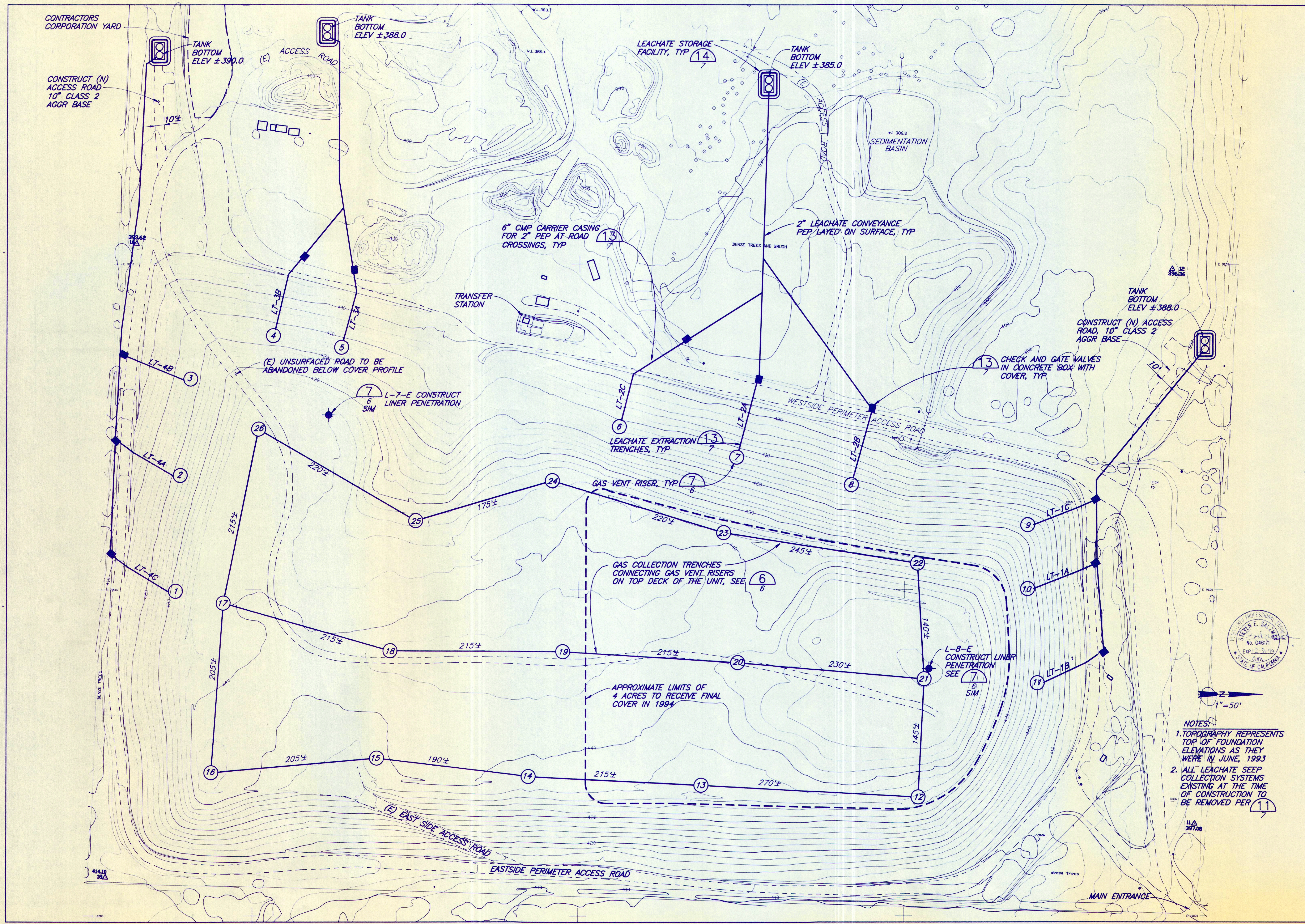
**CONSULTING ENGINEERS  
& GEOLOGISTS**  
312 W. Wabash (707) 441-8855  
Eureka, CA 95501 FAX (707) 441-8877



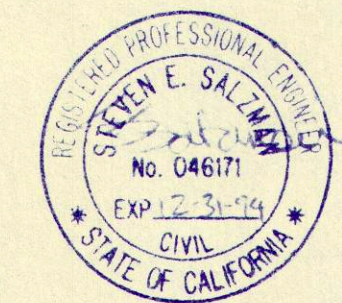
SHEET 3 OF 7		MENDOCINO COUNTY CASPAR SOLID WASTE DISPOSAL SITE CONSTRUCTION PLANS FOR FINAL CLOSURE AND PHASE 1 CORRECTIVE ACTION PROPOSED FINAL CONFIGURATION				DSGN	SS			
DATE 6/94						DR	RW			
PROJ. NO. 940023						CHK	K/JH			
						APVD				
								NO.	DATE	REVISION
										BY



CASP2

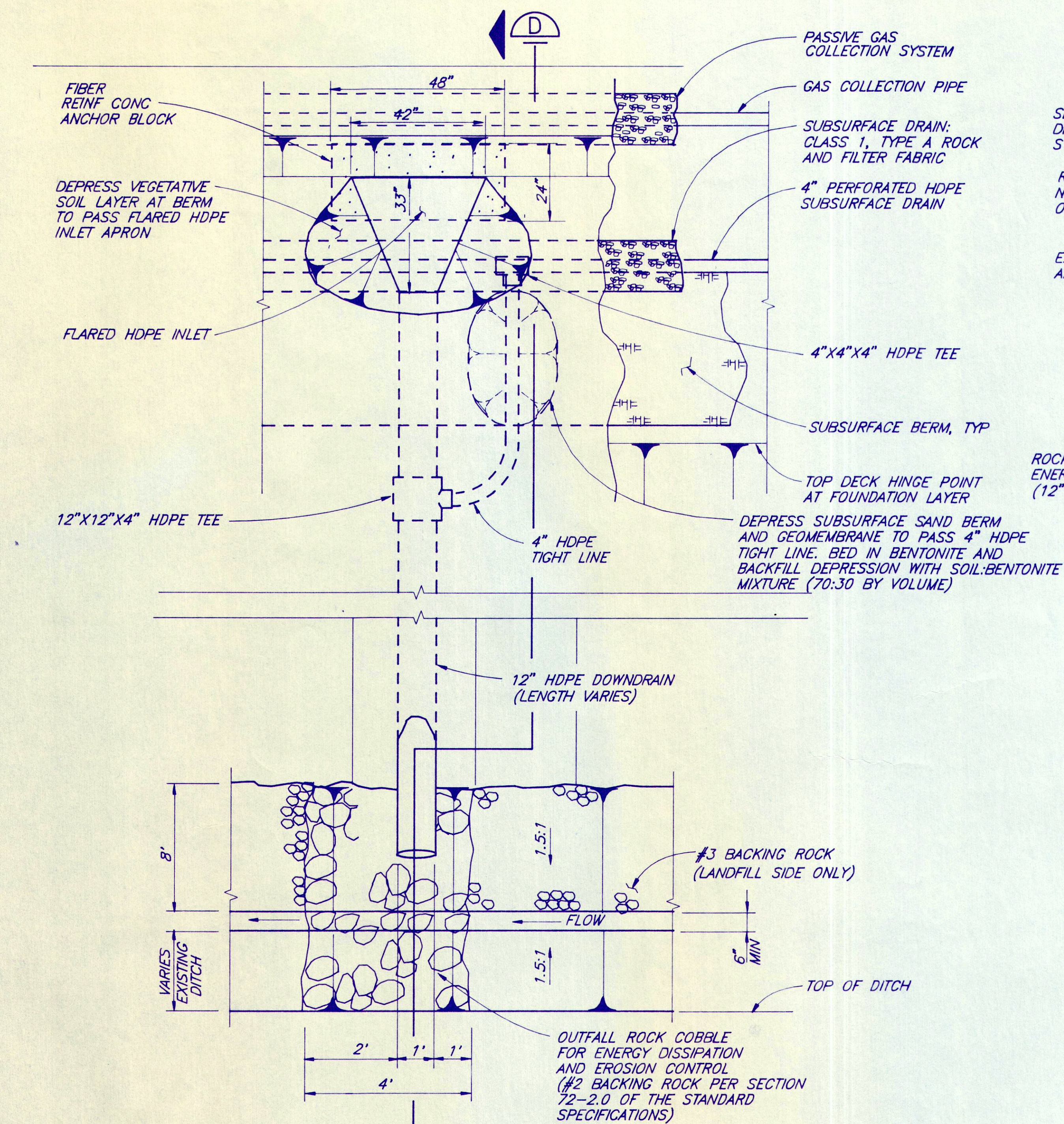


NOTES:  
1. TOPOGRAPHY REPRESENTS TOP OF FOUNDATION ELEVATIONS AS THEY WERE IN JUNE, 1993  
2. ALL LEACHATE SEEP COLLECTION SYSTEMS EXISTING AT THE TIME OF CONSTRUCTION TO BE REMOVED PER 11

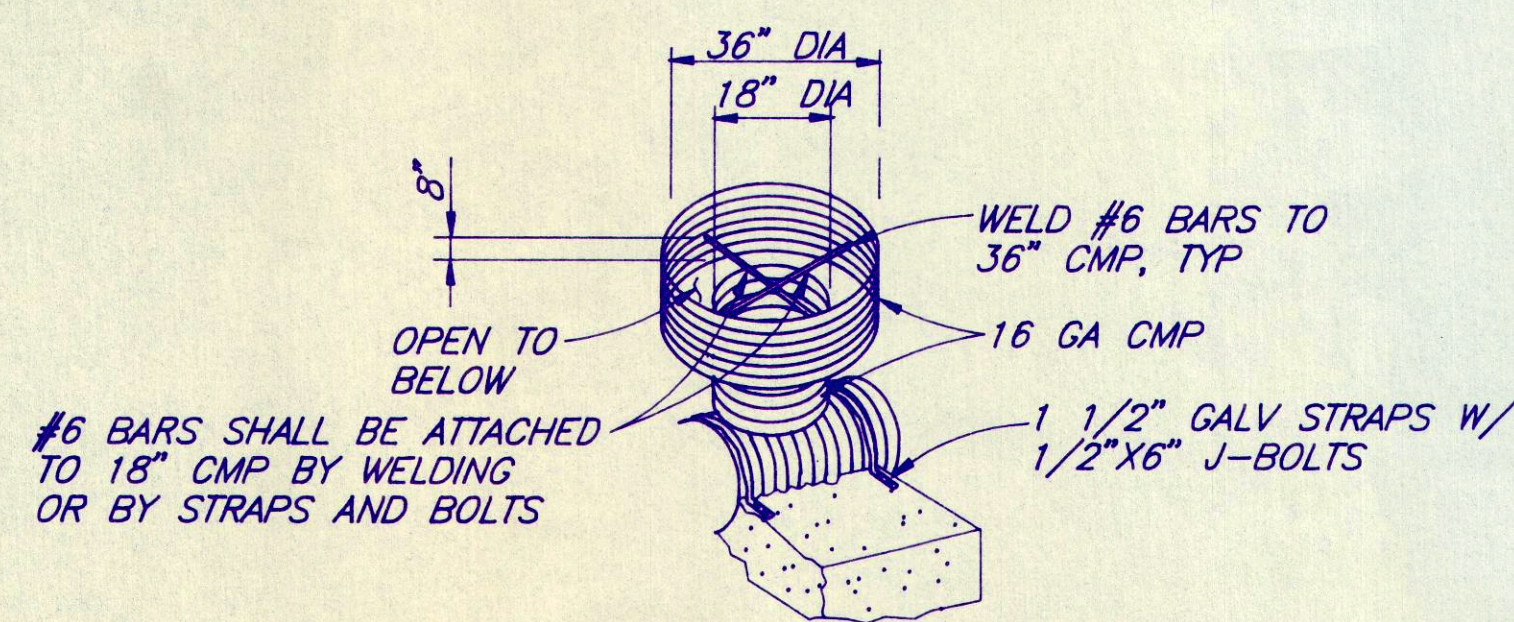


VERIFY SCALES BAS IS ONE INCH ON ORIGINAL DRAWING IF NOT ONE INCH ON SCALES ACCORDINGLY	
CONSULTING ENGINEERS & GEOLOGISTS 812 W. Wabash Eureka, CA 95501 FAX (707) 441-8877	
SHN	
DESIGN	DR LULRW CHK KJW APVD
NO.	DATE
REVISION	BY
MENDOCINO COUNTY CASPAR SOLID WASTE DISPOSAL SITE CONSTRUCTION PLANS FOR FINAL CLOSURE AND PHASE 1 CORRECTIVE ACTION LEACHATE COLLECTION AND GAS VENTING SYSTEMS	
SHEET 4 OF 7	
DATE 6/94	
PROJ. NO. 940023	

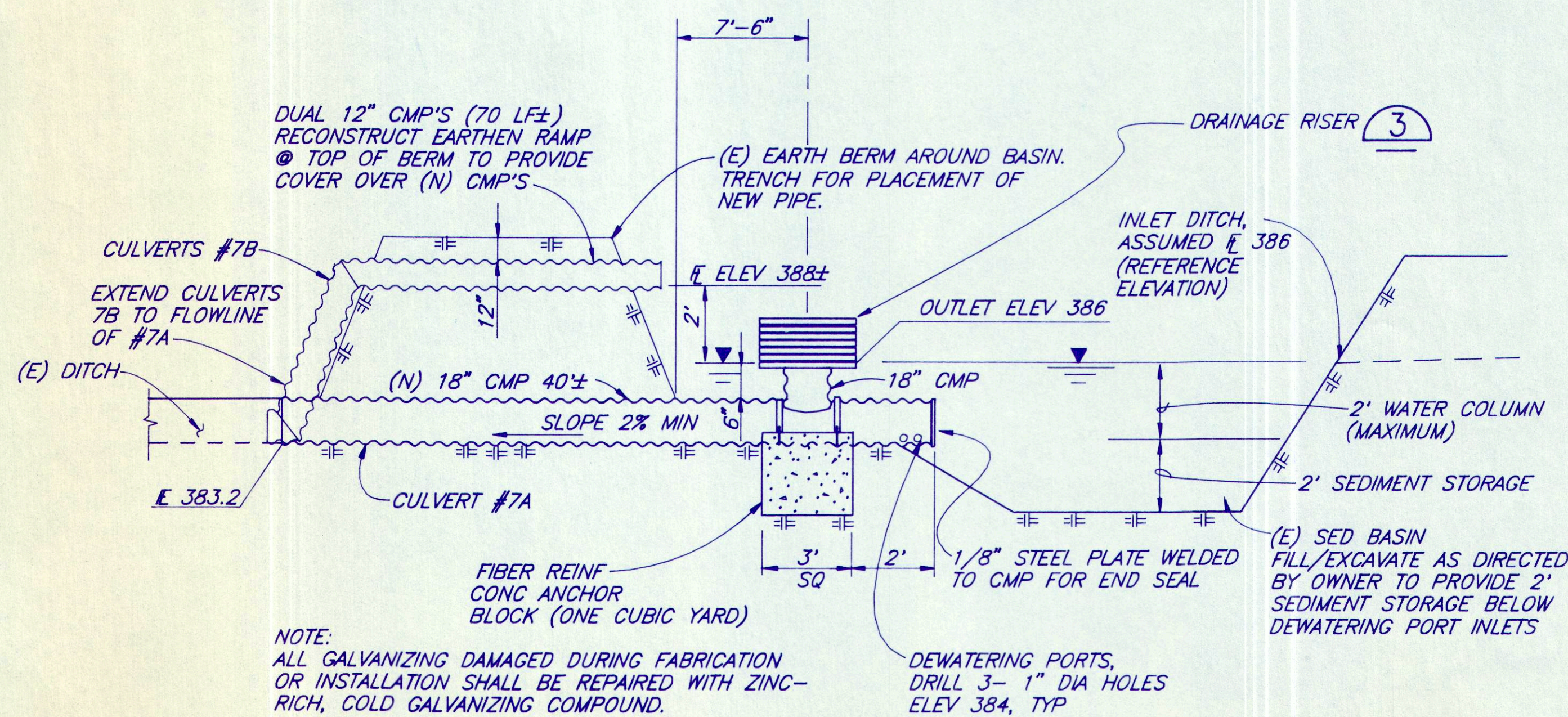




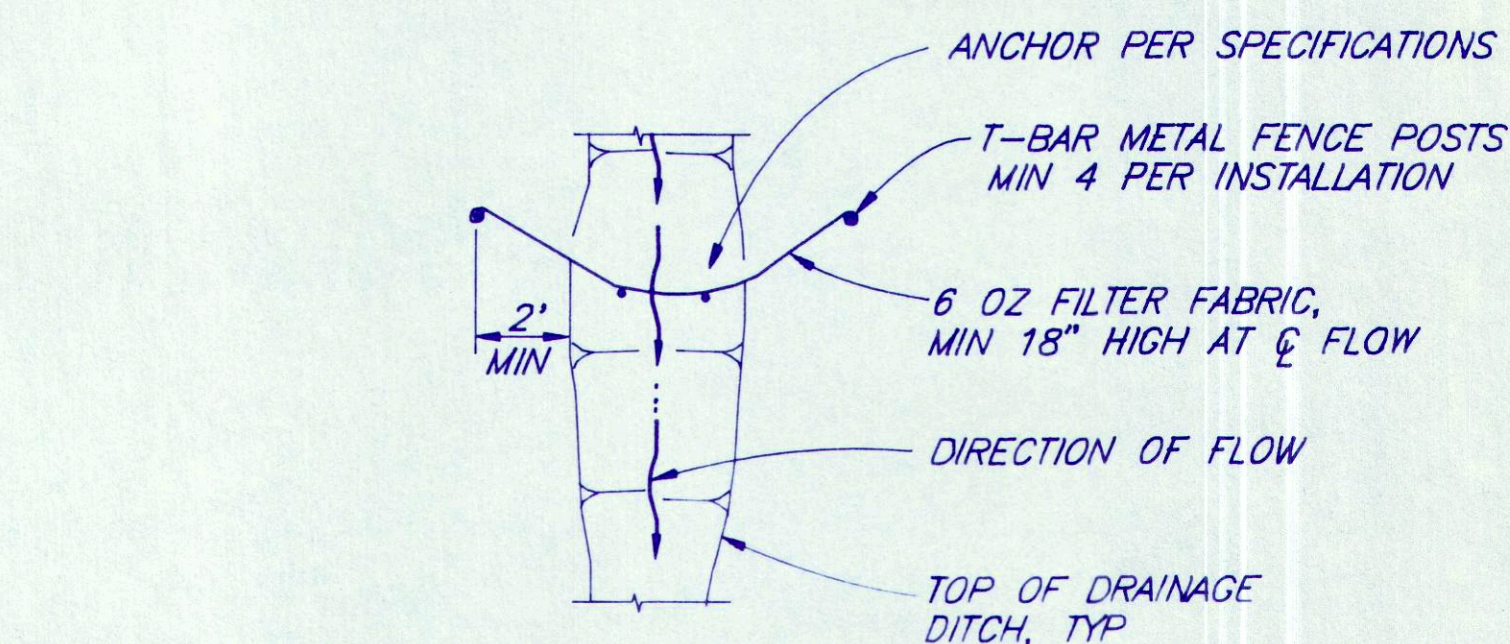
**DETAIL 4**  
NO SCALE



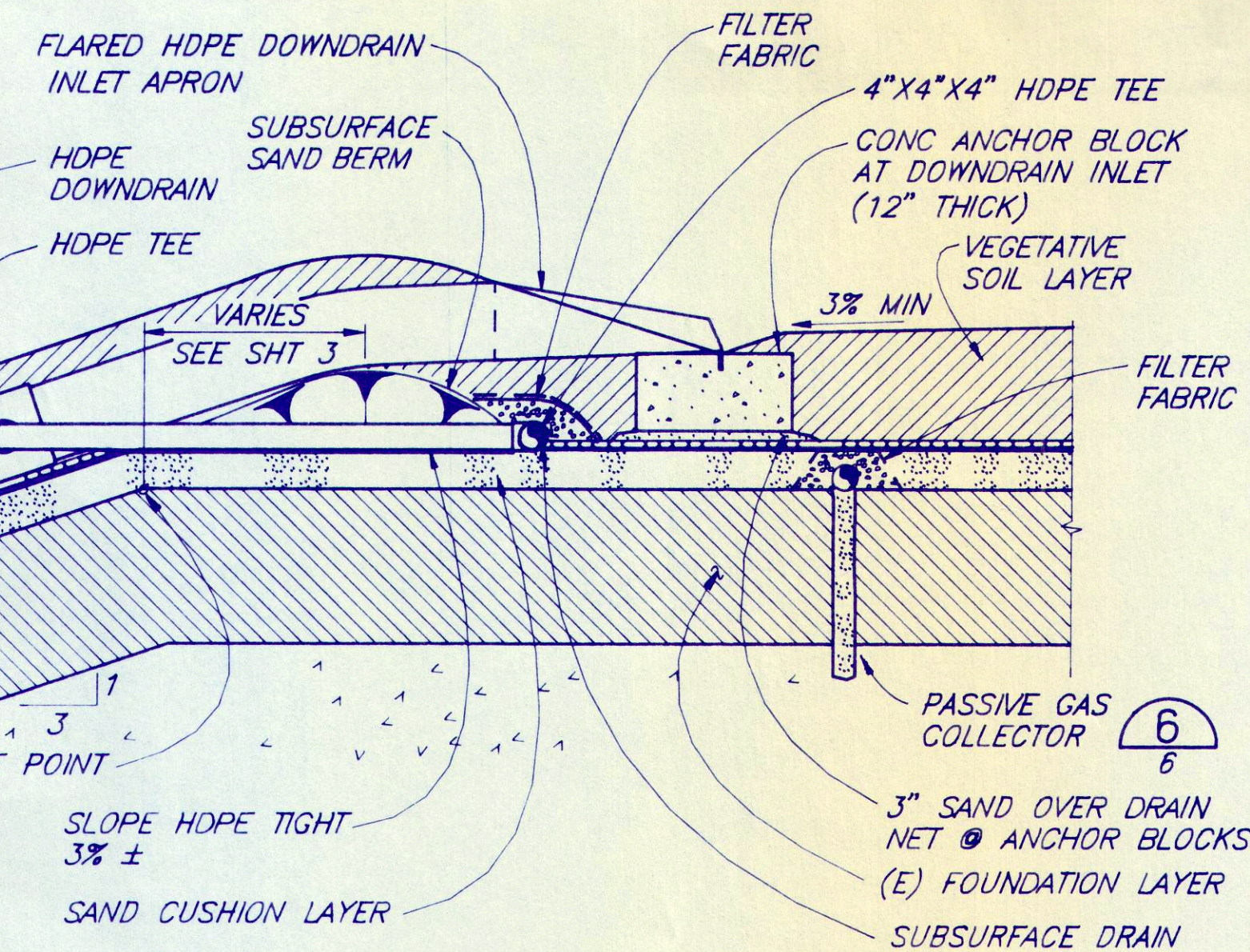
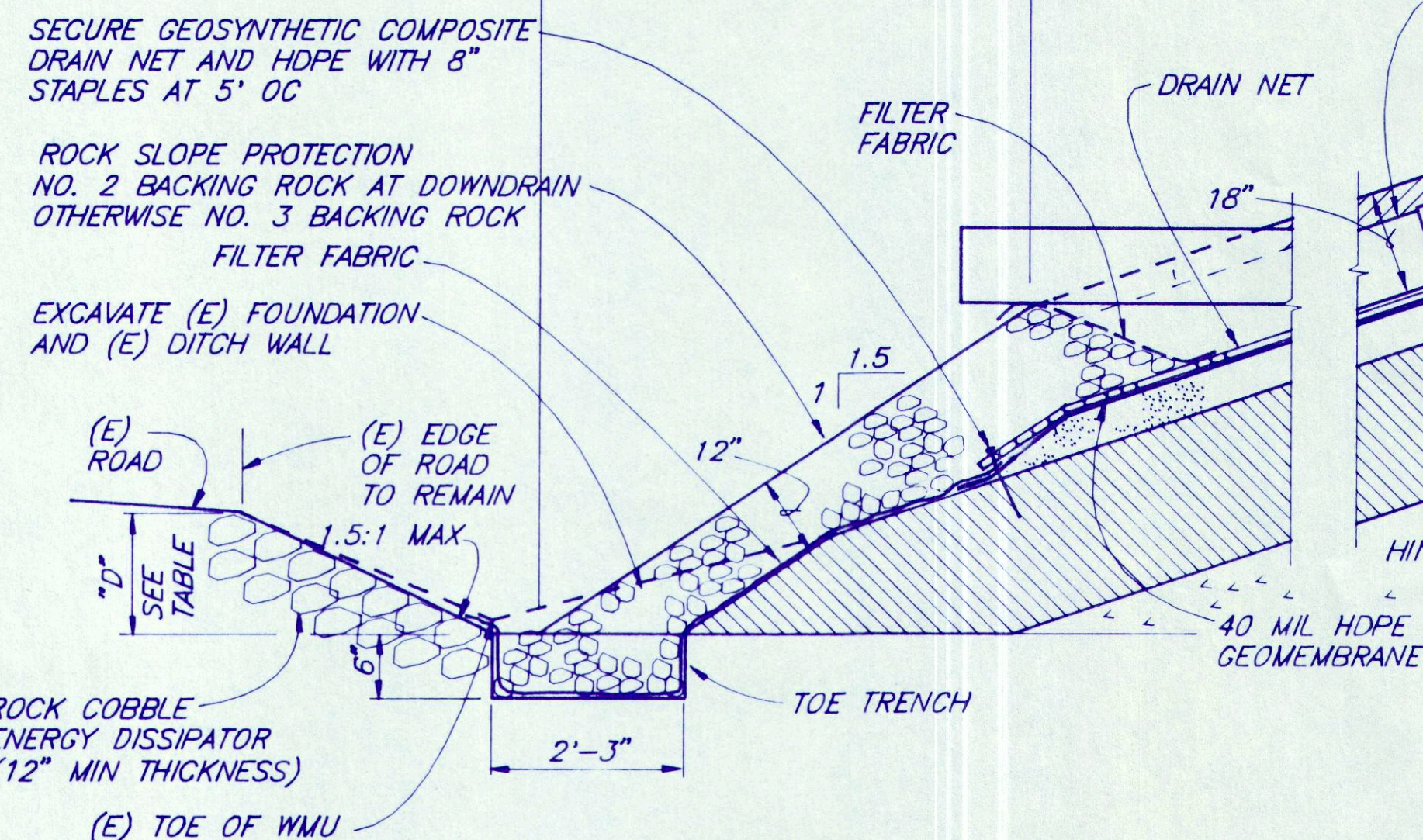
**DETAIL 3**  
NO SCALE



**DETAIL 2**  
NO SCALE



**DETAIL 1**  
NO SCALE



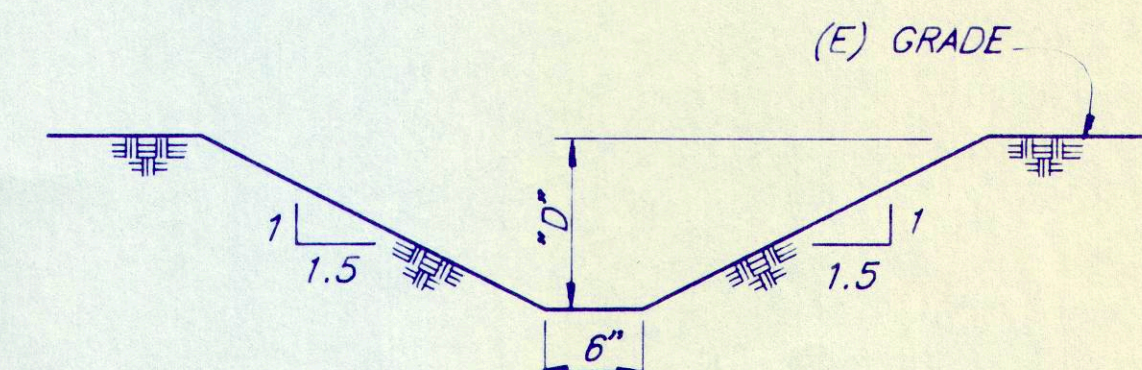
### DITCHES AROUND PERIMETER OF THE WMU

DITCH CROSS-SECTION	DIMENSION "D"	SLOPE	DITCH LENGTH
A	12"	—	—
A-A'	12"	0.10	200'
A'-B	12"	0.015	40'
B-C	18"	0.012	550'
C-D	18"	0.02	500'
D-E	18"	0.012	160'
H-G	18"	0.005	400'
I-H	18"	0.015	120'
I	18"	—	—
J	12"	—	—
J-K	12"	0.011	280'
M-L	12"	0.02	160'
N-M	12"	0.058	170'
O-N	12"	0.035	180'
P-O	12"	0.02	100'
Q-P	12"	0.013	300'
Q-B	12"	0.013	300'

- NOTES: 1. NO CHANGE TO DITCH BETWEEN G & E  
2. TRANSITION BETWEEN DITCH CROSS SECTIONS OVER 20 LF (10' EITHER SIDE OF SECTION)  
3. DIMENSION "D" IS MINIMUM DITCH DEPTH

### SECTION D

NO SCALE 3,5



### DITCHES OUTSIDE WMU PERIMETER

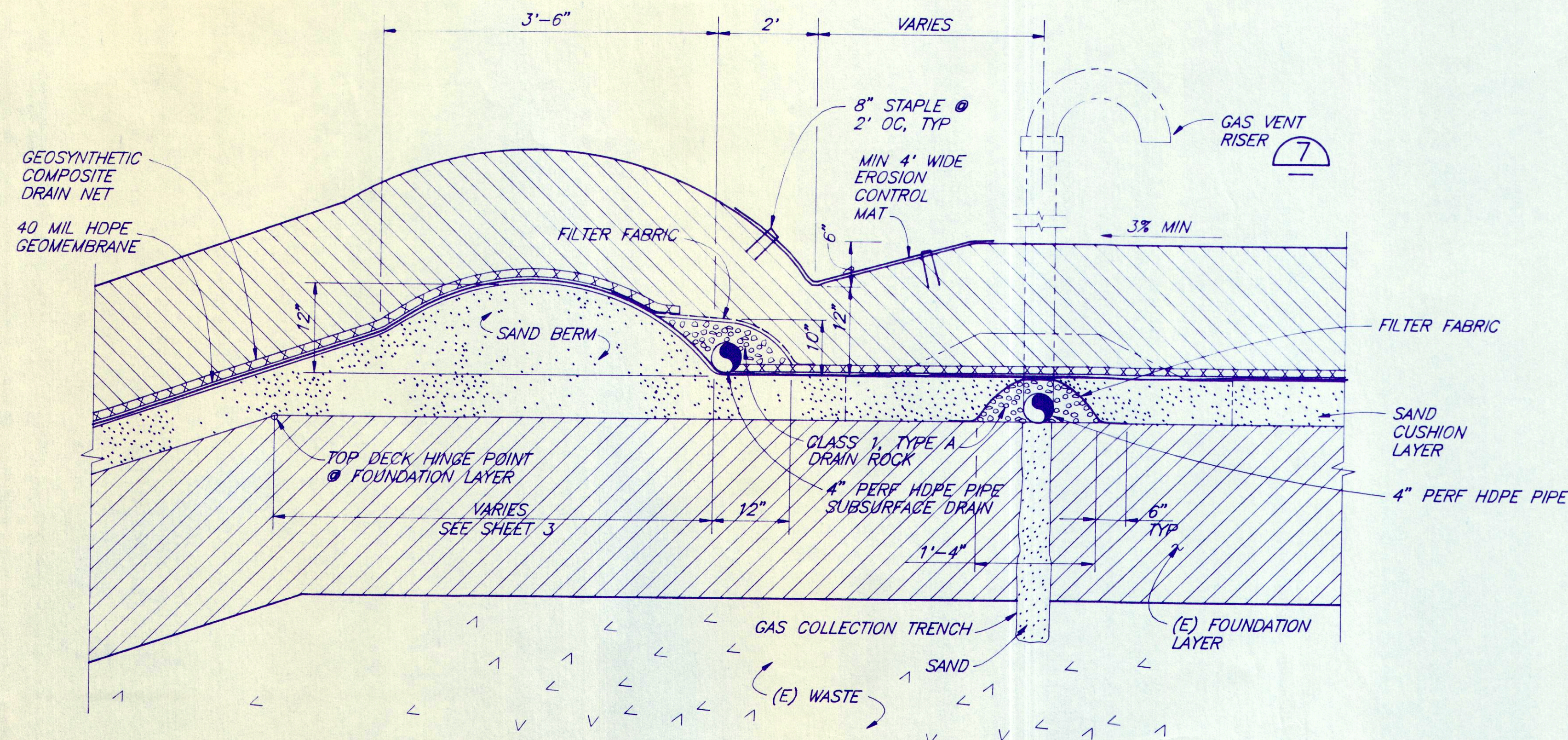
DITCH CROSS-SECTION	DIMENSION "D"	SLOPE	DITCH LENGTH
R	12"	—	—
R-S	12"	0.011	440'
S'-T	12"	0.017	360'
T-U	12"	0.04	110'
V-W	(E PIPE)	0	—
W	18"	—	—
W-X	18"	0.02	600'
Y	24"	—	—

- NOTES: 1. TRANSITION BETWEEN DITCH CROSS SECTIONS OVER 20 LF (10' EITHER SIDE OF SECTION)  
2. ADJUST SLOPE AS NECESSARY TO MEET CULVERT FLOW LINES OVER 30 LF  
3. TRANSITION TO EXISTING DITCH AT Y. MAKE TRANSITION OVER FINAL 20' OF DITCH  
4. DIMENSION "D" IS MINIMUM DITCH DEPTH. IF DITCH CROSS SECTIONS EXCEED DIMENSIONS SHOWN THEY NEED NOT BE REGRADED.

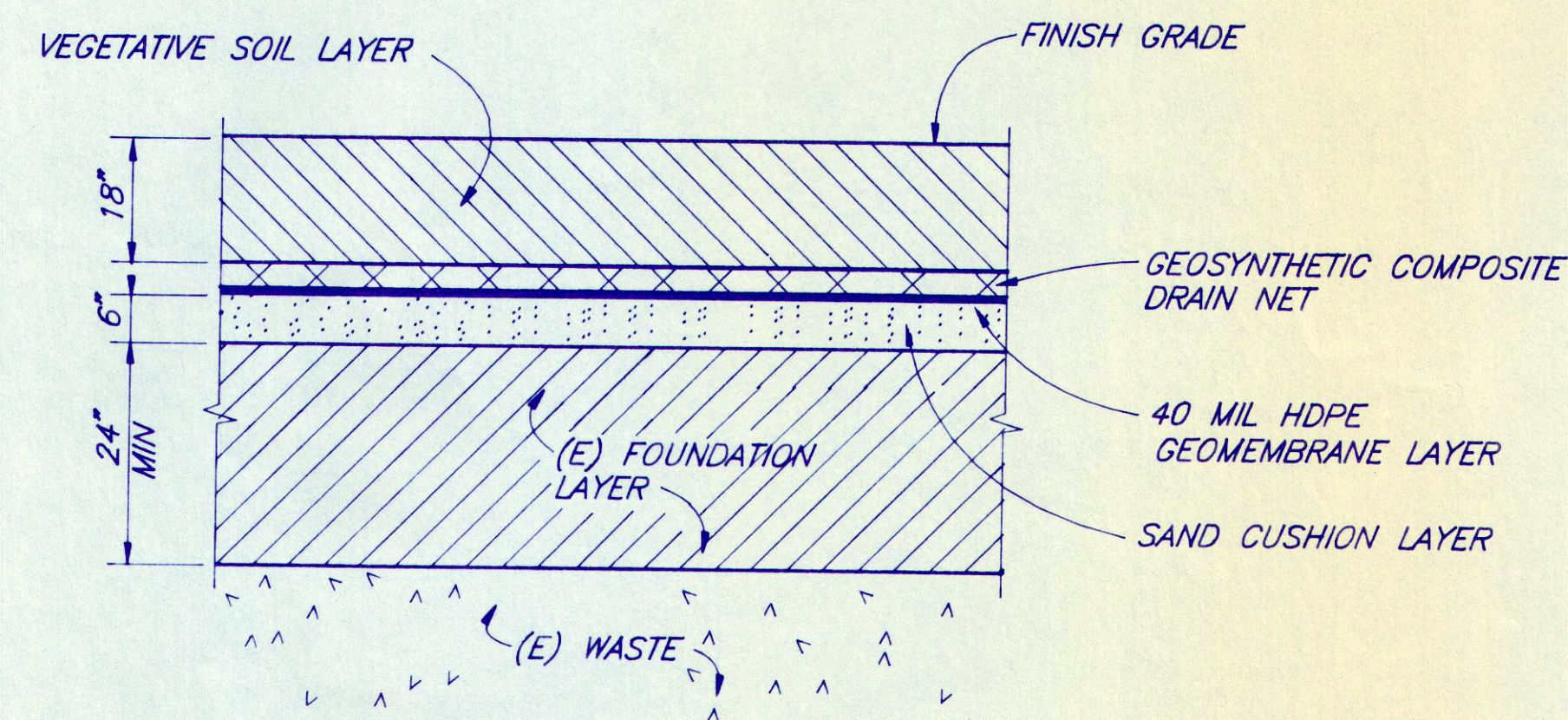
### SECTION C

NO SCALE 3

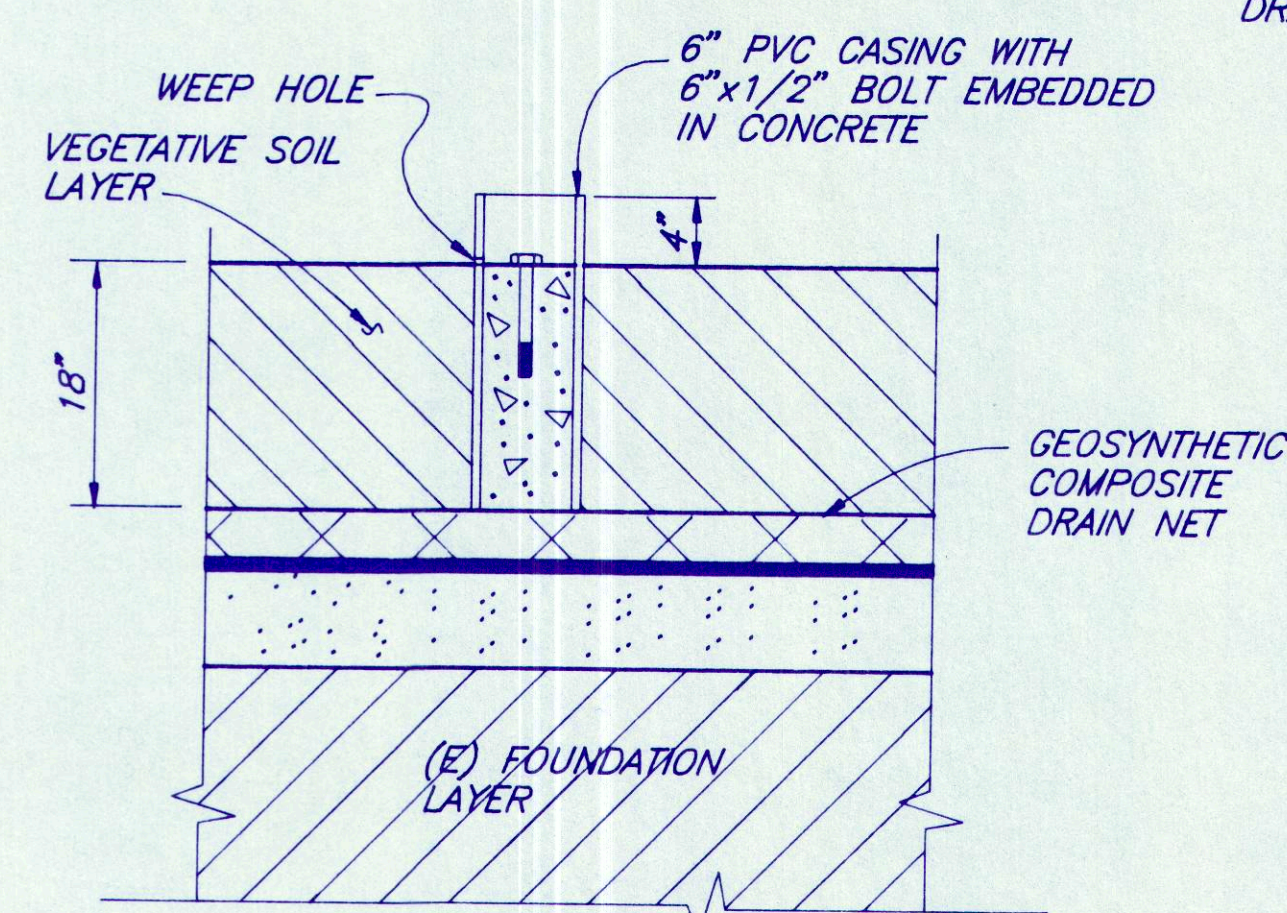




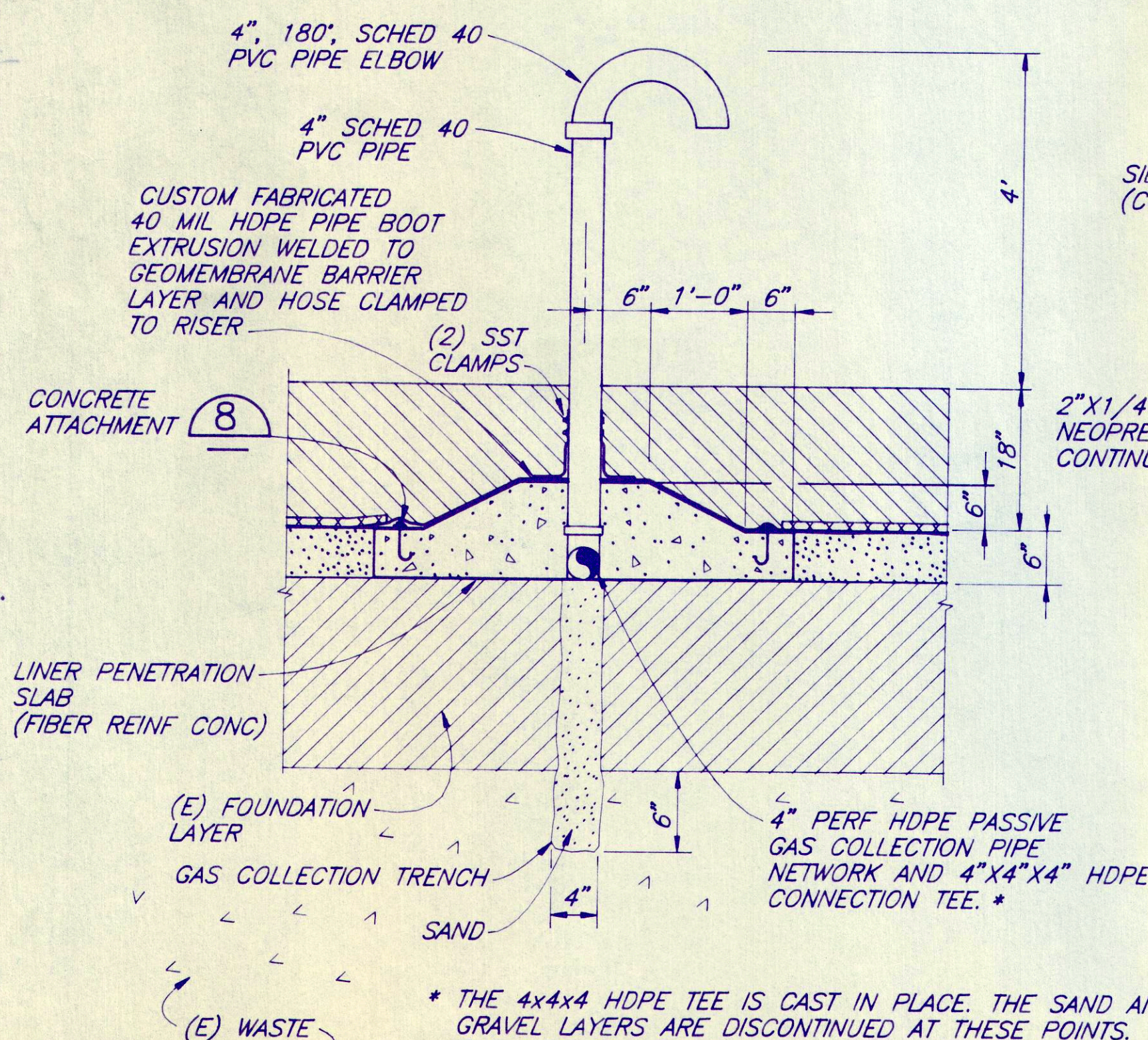
**DETAIL 6**  
NO SCALE 3,4



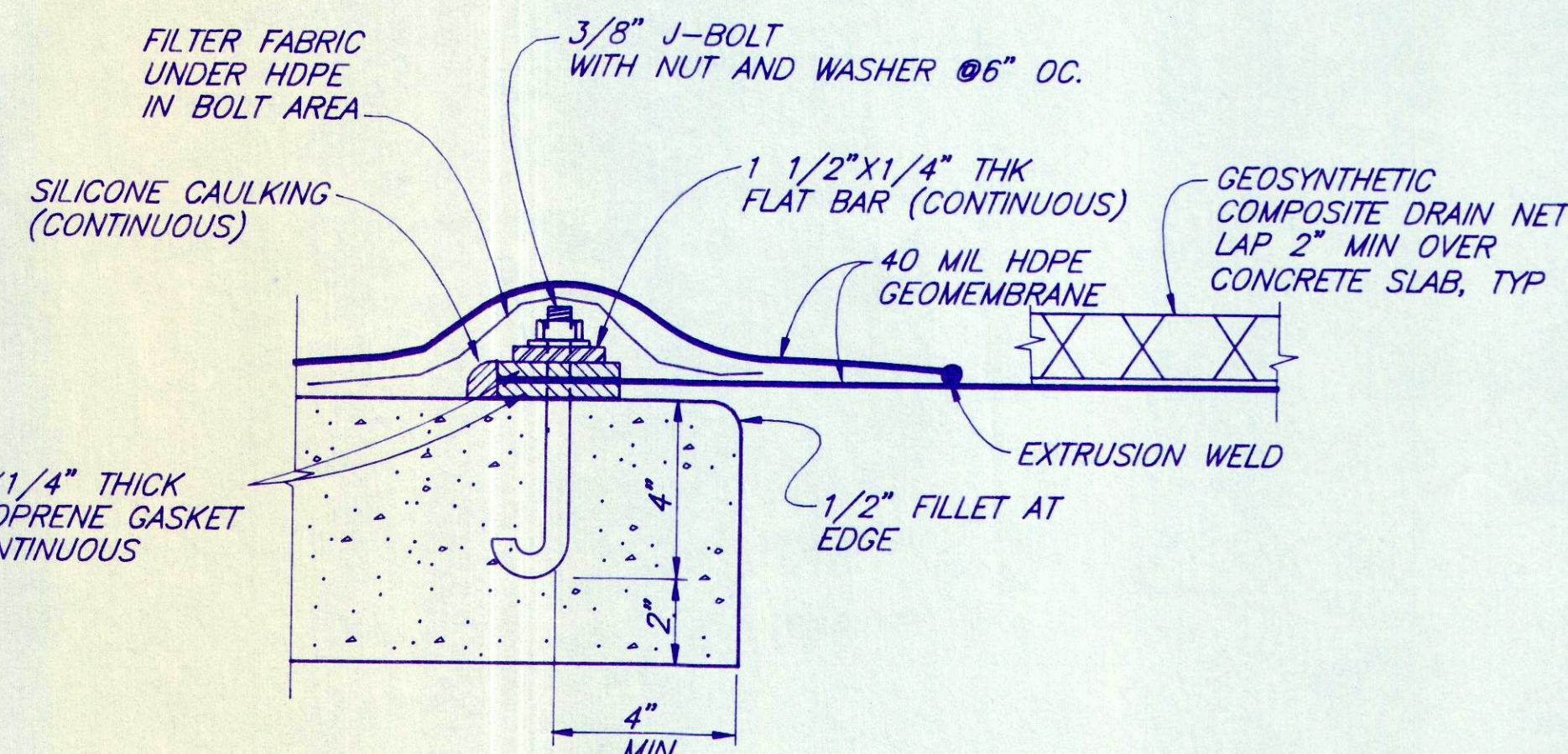
**DETAIL 9**  
NO SCALE 3



**DETAIL 10**  
NO SCALE 3



**DETAIL 7**  
NO SCALE 4,6,7

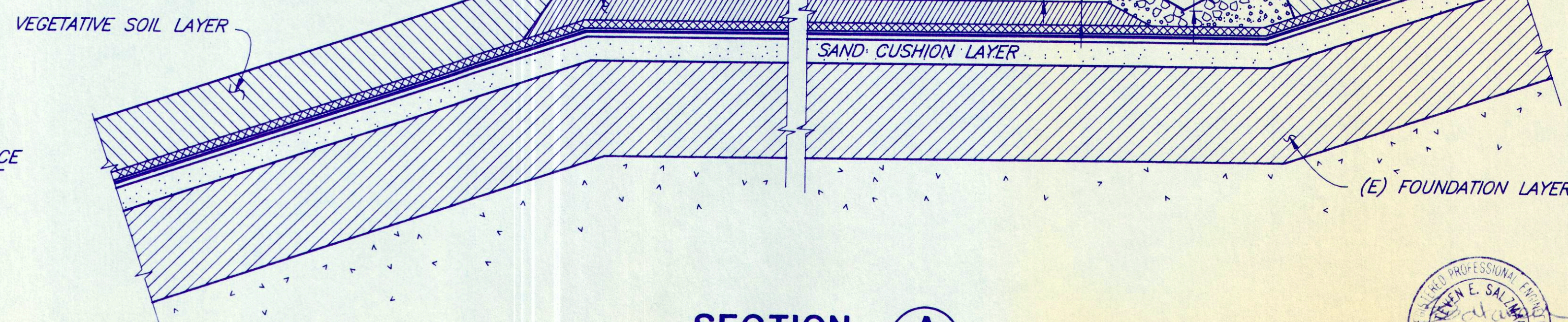


**DETAIL 12**  
NO SCALE 3

**NOTES:**

1. CONCRETE SURFACES SHALL BE STEEL TROWEL FINISHED SMOOTH
2. NATIONAL SEAL COMPANY "SEAL LOCK" CAST-IN-PLACE HDPE CONNECTOR MAY BE USED IN LIEU OF J-BOLT AND FLAT BAR ATTACHMENT.
3. LINER PENETRATIONS IN LEACHATE STORAGE FACILITIES DO NOT REQUIRE HDPE BOOTS.

**DETAIL 8**  
NO SCALE



**SECTION A**  
NO SCALE 3



<p>VERIFY SCALES BAR IS ONE INCH ON ORIGINAL DRAWING IF NOT ONE INCH ON THIS SHEET, ADJUST SCALES ACCORDINGLY</p>				<p>CONSULTING ENGINEERS &amp; GEOLOGISTS 812 W. Wabash Eureka, CA 95501 TEL (707) 441-8855 FAX (707) 441-8877</p>			
SS	BY	DATE	NO.	GENERAL REVISIONS	REVISION	DATE	NO.
		4/25/94					
DSGN	SS, TM	DR	LU	CHK	K/W	APVD	
<p>MENDOCINO COUNTY CASSPER SULLIVAN, PERSONAL SITE CONSTRUCTION PLANS FOR CORRECTIVE ACTION AND PHASE 1 CORRECTIVE ACTION LANDFILL GAS SYSTEM AND LINER PENETRATION DETAILS</p>							
SHEET				6 OF 7			
DATE				6/94			
PROJ. NO.				940023			



