



What is a **Stable Bubble?**

What is a Stable Bubble?

This is a stable group of people who cannot change members for 4 weeks, who can gather for educational or recreational purposes. **An individual may be part of one of each of the types of age-appropriate Stable Bubbles below.** Ones in these Stable Bubbles do not have to wear face coverings or practice social distancing from each other, but still must practice good hygiene and stay home if sick.

Categories of Stable Bubbles

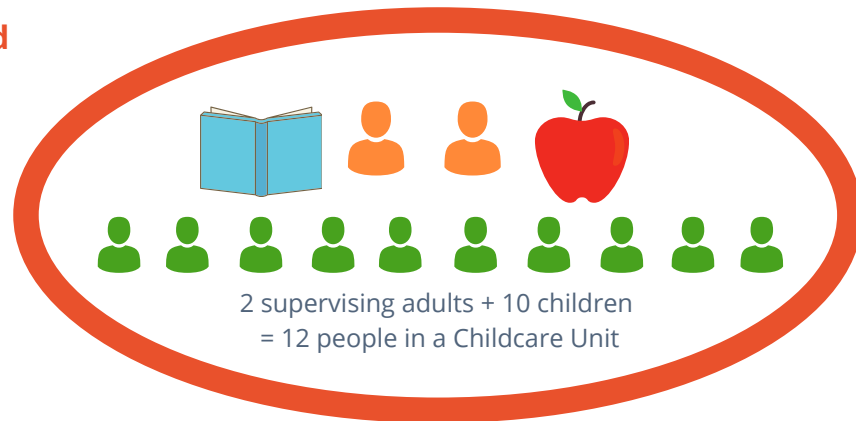
Household Support Unit (adults and children with a maximum total of 6)

This example of a Stable Bubble has 2 different households. The first household has 3 adults, and the second household has 2 adults and 1 child. This Household Support Unit may gather for recreational purposes, also including carpooling, religious services, and etc.



Childcare Unit (at least 1 supervising adult, and children with a maximum total of 12)

This example of a Stable Bubble consists of 10 children, and 2 supervising adults, (may have fewer children, but at least one adult must be included). This Unit is stable (unchanging members) for 4 weeks. This Unit is meant for childcare and educational purposes. No social distancing or facial covering required when they are together inside.



Children's Recreational Activity Unit (at least 1 supervising adult, and children with a maximum total of 12)

This example of a Stable Bubble consists of 10 children, and 2 supervising adults, (may have fewer children, but at least one adult must be included). This Unit is stable (unchanging members) for 4 weeks. This Bubble is meant for recreational purposes. No social distancing or facial covering required when they are together inside.



Work Group

A Work Group is 6 or fewer individuals who engage in work-related activities. This is a stable group, meaning that members cannot change for 4 weeks. **Work groups should continue to practice social distancing and wear facial coverings. It is strongly recommended that a workplace has 2 or more separate, non-overlapping Work Groups.**

