

CROP REPORT



2008



This 2008 Crop Report is dedicated to Dave Bengston who retired as the Mendocino County Agricultural Commissioner/Sealer of Weights and Measures in January 2009. Dave started his career with the Department of Agriculture as a weights and measures inspector in 1972. After working his way up the ladder, he was appointed Agricultural Commissioner/Sealer in 1989, and served in that capacity until his retirement. Dave is well known and respected in the community as well as being considered a local expert on birds and wild mushrooms.

TONY LINEGAR
Agricultural Commissioner
Sealer of Weights & Measures

E-MAIL
linegar@co.mendocino.ca.us

TELEPHONE
(707) 463-4208



COUNTY OF MENDOCINO
DEPARTMENT OF
AGRICULTURE
890 N BUSH STREET

(VACANT)
Assistant Agricultural Commissioner
Assistant Sealer of Weights & Measures

E-MAIL
@co.mendocino.ca.us

FAX
(707) 463-0240

A.G. KAWAMURA, SECRETARY
CALIFORNIA DEPARTMENT OF FOOD AND AGRICULTURE

and

THE HONORABLE BOARD OF SUPERVISORS OF MENDOCINO COUNTY

Carre Brown – District 1
John McCowen – District 2
David Colfax – District 5

John Pinches – CHAIR - District 3
Kendall Smith– District 4

It is my pleasure to submit the 2008 Mendocino County Crop Report.

The **total gross agricultural value** for commodities produced in 2008 was **\$175,695,400** a 13.4% decrease from 2007. The leading category was **timber** with a value of **\$67,004,008**. Agricultural production, excluding timber, had a value of **\$108,691,400**, which is a decrease from 2007 of 15.2%.

Winegrapes were the second leading crop. The value of **\$62,047,200** was a decrease of 17.7% from 2007.

This crop report represents only the gross value to the growers. It does not reflect any net income, costs of production, or packinghouse charges.

I would like to express my gratitude to all the people, in particular Jennifer Krauss and Caralyn Gulseth, without whose help this report would not be possible. They include all the growers, packers, processors, my staff, the U.C. Cooperative Extension Service, and other government agencies.

Respectfully submitted,

Tony Linegar
Agricultural Commissioner/Sealer

**MENDOCINO COUNTY
DEPARTMENT OF AGRICULTURE**

TONY LINEGAR
Agricultural Commissioner
Sealer of Weights and Measures

ANNUAL CROP REPORT FOR YEAR 2008

STAFF

(VACANT)..... Assistant Agricultural Commissioner
Assistant Sealer of Weights & Measures

RAY HARRIE Ag/Measurement Standards Specialist III

DIANE CURRY Ag/Measurement Standards Specialist III

CHUCK MORSE..... Ag/Measurement Standards Specialist III

JENNIFER KRAUSS Office Manager

CARALYN GULSETH Staff Assistant II



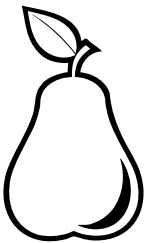
SEASONAL INSPECTORS

Sheryl Greene

BOARD OF SUPERVISORS

CARRE BROWN..... District 1
JOHN MCCOWEN..... District 2
JOHN PINCHES.. . . . District 3
KENDALL SMITH, District 4
J. DAVID COLFAX, District 5

FRUIT AND NUT CROPS

COMMODITY	YEAR	BEARING ACREAGE	TONS PER ACRE	PRODUCTION IN TONS	\$ PER TON	VALUE
APPLES, TOTAL	2008	265	12.1	3,206	\$ 592.00	\$ 1,900,500.00
	2007	265	10.5	2,783	\$ 510.00	\$ 1,420,200.00
<i>Fresh</i>	2008			1,731	\$ 890.00	\$ 1,540,600.00
	2007			1,809	\$ 679.00	\$ 1,228,300.00
<i>Other (Dried, Juice, etc.)</i>	2008			1,475	\$ 244.00	\$ 359,900.00
	2007			974	\$ 197.00	\$ 191,900.00
WINE GRAPES, TOTAL	2008	16,400	2.8	45,779	\$ 1,355.00	\$ 62,047,200.00
	2007	16,342	3.8	61,589	\$ 1,223.00	\$ 75,348,300.00
<i>White Varieties</i>	2008	5,920	3.4	20,124		
	2007	5,901	4.3	25,387		
<i>Red Varieties</i>	2008	10,480	2.4	25,655		
	2007	10,401	3.5	36,202		
PEARS, TOTAL	2008	1,953	16.4	32,120	\$ 467.00	\$ 15,012,700.00
	2007	2,047	18.5	37,903	\$ 447.00	\$ 16,927,200.00
Bartlett (1)	2008	1,720	16.7	28,683	\$ 414.00	\$ 11,874,800.00
	2007	1,813	19	34,412	\$ 408.00	\$ 14,049,800.00
<i>Canning</i>	2008			16,339	\$ 260.00	\$ 4,248,100.00
	2007			17,949	\$ 235.00	\$ 4,218,000.00
<i>Fresh (1)</i>	2008			9,212	\$ 805.00	\$ 7,415,700.00
	2007			12,911	\$ 745.00	\$ 9,618,700.00
<i>Other (Baby Food Dried, Paste)</i>	2008			3,132	\$ 70.00	\$ 219,200.00
	2007			3,552	\$ 60.00	\$ 213,100.00
Bosc (1)	2008	130	13.6	1,768	\$ 945.00	\$ 1,670,800.00
	2007	126	8.1	1,707	\$ 860.00	\$ 1,468,000.00
Red (1)	2008	103	16.2	1,669	\$ 879.00	\$ 1,467,100.00
	2007	108	16.5	1,784	\$ 790.00	\$ 1,409,400.00
MISC. TOTAL (2)	2008	343				\$ 1,800,000.00
	2007	330				\$ 2,070,000.00
TOTALS	2008	18961				\$ 80,760,400.00
	2007	18,984				\$ 95,765,700.00

(1) The fresh values listed for pears are FOB values. The actual average prices (farm gate values) to the growers for 2007 were: Bartlett \$205, Bosc \$622, and Reds \$419. for 2008 were: Bartlett \$256, Bosc \$464, and Reds \$395.

(2) Miscellaneous includes berries, cherries, chestnuts, olives, other pears, peaches, persimmons, pistachios and walnuts.

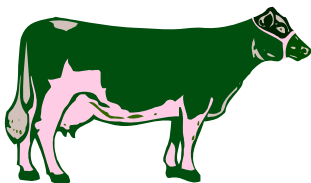
FRUIT, NUT, AND GRAPEVINE ACREAGE

CROP	ACRES BEARING	ACRES NON-BEARING	TOTAL
APPLES	265	0	265
WINE GRAPES, TOTAL	16,400	420	16,820
Red	10,480	134	10,614
White	5,920	281	6,201
Rootstock	1.5	5	7
OLIVES	73	16	89
PEARS, TOTAL	1,981	11	1,992
Bartlett	1,720	5	1,725
Red	103	0	103
Bosc	130	1	131
Other	28	5	33
WALNUTS, ENGLISH	44	0	44
MISCELLANEOUS*	104	8	112
TOTALS	18,867.0	455	19,322

*Miscellaneous includes: Berries, cherries, chestnuts, guava, peaches, persimmons, pistachios, plums, and table grapes.

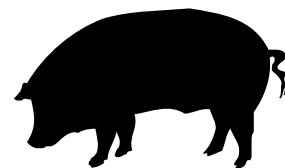
LIVESTOCK INVENTORIES

COMMODITY	2008	2007
All Cattle and Calves	18,000	17,000
Beef Cows and Heifers, 2 years and older	10,000	10,000
Milk Cows	1,500	1,500
Sheep and Lambs, all	9,000	11,000
Swine	1,400	1,600



"If we estimate dignity by immediate usefulness, agriculture is undoubtedly the first and noblest science."

-Samuel Johnson



LIVESTOCK PRODUCTION

COMMODITY	YEAR	NO. OF HEAD	TOTAL CWT** LIVE WT.	\$ PER	\$ VALUES
CATTLE AND CALVES	2008	9,413	75,304	\$78.92	\$5,943,000
	2007	9,543	76,344	\$83.07	\$6,342,600
SHEEP AND LAMBS	2008	3,174	2,874	\$104.00	\$298,900
	2007	3,550	3,018	\$114.00	\$344,100
SWINE	2008	750	1,800	\$48.00	\$87,800
	2007***	800	1,920	\$48.80	\$93,700
MISCELLANEOUS*	2008				\$900,000
	2007				\$850,000
TOTALS	2008				\$7,179,700
	2007				\$7,719,800

*Miscellaneous includes goats, pigeons, poultry, rabbits, turkeys, and aquaculture (fish farms).

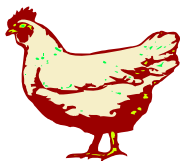
**CWT= 100 lbs.

***2007 Revised

LIVESTOCK AND POULTRY PRODUCTS

COMMODITY	YEAR	PRODUCTION IN LBS.	PER UNIT	\$ VALUE
MILK	2008	314,379 CWT.	\$18.22	\$5,728,000
	2007	316,786 CWT.	\$19.58	\$6,202,700
WOOL	2008	41,500 LB.	\$1.82	\$75,500
	2007	46,500 LB.	\$1.44	\$67,000
MISCELLANEOUS*	2008			\$2,350,000
	2007			\$2,350,000
TOTALS	2008			\$8,153,500
	2007			\$8,619,700

*Miscellaneous includes apiary, eggs, emus, cheese, manure, and ostriches.



NURSERY PRODUCTION

COMMODITY	YEAR	GREENHOUSE SQUARE FEET	FIELD ACRES	\$ VALUES
Nursery*	2008	190,834	64	\$3,685,000
	2007	195,034	80	\$3,578,000
Christmas Trees	2008	N/A	N/A	\$19,600
	2007	N/A	N/A	\$5,500
TOTALS	2008	190,834	64	\$3,704,600
	2007	195,039	80	\$3,583,500



*Includes turf and cut flowers

VEGETABLE CROPS

COMMODITY	YEAR	ACRES	\$ VALUES
Miscellaneous Vegetables*	2008	320	\$900,000
	2007	320	\$1,100,000



*Includes beans, sweet corn, garlic, herbs, melons, peas, potatoes, squash, tomatoes, etc.

FIELD CROPS

COMMODITY	YEAR	ACRES	YIELD/ ACRE	TOTAL YIELD	PER AUM	\$ VALUES
IRRIGATED PASTURE	2008	6,000	9.00 AUM*	54,000	\$19.00	\$1,026,000
	2007	6,000	9.00 AUM*	54,000	\$19.00	\$1,026,000
PASTURE, other (grassland, coast bench)	2008	365,000	.50 AUM*	182,500	\$11.10	\$2,025,700
	2007	365,000	.90 AUM*	328,500	\$11.10	\$3,646,400
RANGE	2008	355,000	.34 AUM*	120,700	\$7.80	\$941,500
	2007	355,000	.63 AUM*	223,650	\$7.80	\$1,744,500
MISCELLANEOUS**	2008					\$4,000,000
	2007					\$5,000,000
TOTALS	2008					\$7,993,200
	2007					\$11,416,900

*AUM means Annual Unit Month (food required to feed a 1,000 pound steer for one month).

**Miscellaneous includes alfalfa, barley, beans, corn, oats, and hay.



FOREST PRODUCTS

TIMBER	2008	2007
Log Production (board feet)	92,652,000	103,031,000
Total Stumpage Value, net	\$39,208,408	\$43,647,900
Total Value at Mill, gross	\$67,004,008	\$74,594,400

- 1) Calendar year 2008 experienced a 10% decrease in harvest yields for Mendocino County from the previously reported year. The harvest level essentially represents 100% extraction from private lands.
- 2) The average price for stumpage based on the information provided by the Board of Equalization is approximately \$423/mbf for the timber harvested within Mendocino County. This reflects a .25% decrease from the 2007 value of \$424/mbf.
- 3) The combined value of delivered value at the mill includes both stumpage (\$423/mbf) and logging and hauling costs (\$300/mbf) for a total value of \$723/mbf = \$67,004,008
- 4) Mendocino County is ranked fifth in the state of timber producing counties behind Humboldt, Siskiyou, Shasta and Plumas counties.
- 5) Mendocino County ranks fourth in the state in timber values. The three top ranking counties are Humboldt, Siskiyou and Shasta.

Data based on information from Gregory A. Giusti, U.C. Cooperative Extension.

10 YEAR COMPARISON (LOG PRODUCTION)

YEAR	Log Production (Board Feet)	Value at Mill (Gross)
2008	92,652	\$67,004,008
2007	103,031,000	\$74,594,400
2006	110,168,000	\$86,481,900
2005	120,841,000	\$89,441,000
2004	109,548,000	\$66,605,200
2003	112,568,000	\$68,496,100
2002	97,722,000	\$53,942,500
2001	117,596,000	\$80,072,500
2000	156,101,000	\$145,798,400
1999	227,515,000	\$151,069,000



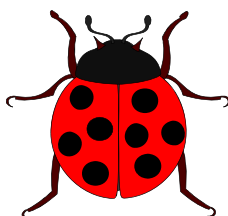
SUSTAINABLE AGRICULTURE IN 2008

ORGANIC ACRES

CROPS	ACRES
Wine grapes	3,943
Fruits & Nuts	527
Vegetables	315
Herbs	35
Pasture/Forage/Grain	2,972
Nursery & Cut Flowers	7
TOTAL	7,799

BIOLOGICAL CONTROL

BIO-CONTROL AGENT	SCOPE OF PROGRAM
Bull Thistle Gall Fly	3 Sites
Gorse Weevil	Generally Distributed
Gorse Spider Mite	Generally Distributed
Italian Thistle Seed Head Weevil	Widely Distributed
Klamath Weed Beetles	Widely Distributed
Klamath Weed Root Borers	Widely Distributed
Puncture Vine Seed Weevil	Generally Distributed
Puncture Vine Stem Weevil	Generally Distributed
Tansy Ragwort Cinnabar Moth	Established
Tansy Ragwort Flea Beetle	Established
Yellow Starthistle Seed Head Weevil	Widely Distributed
Yellow Starthistle Gall Forming Fly	Widely Distributed
Yellow Starthistle Hairy Weevil	Generally Distributed
Ash Whitefly Stingless Wasp	Established
Peacock Fly #2 (<i>Chaetorellia succinea</i>)	Widely Distributed
Yellow Starthistle Rust (<i>Puccinea jaceae</i>)	6 Sites (Failed to establish)



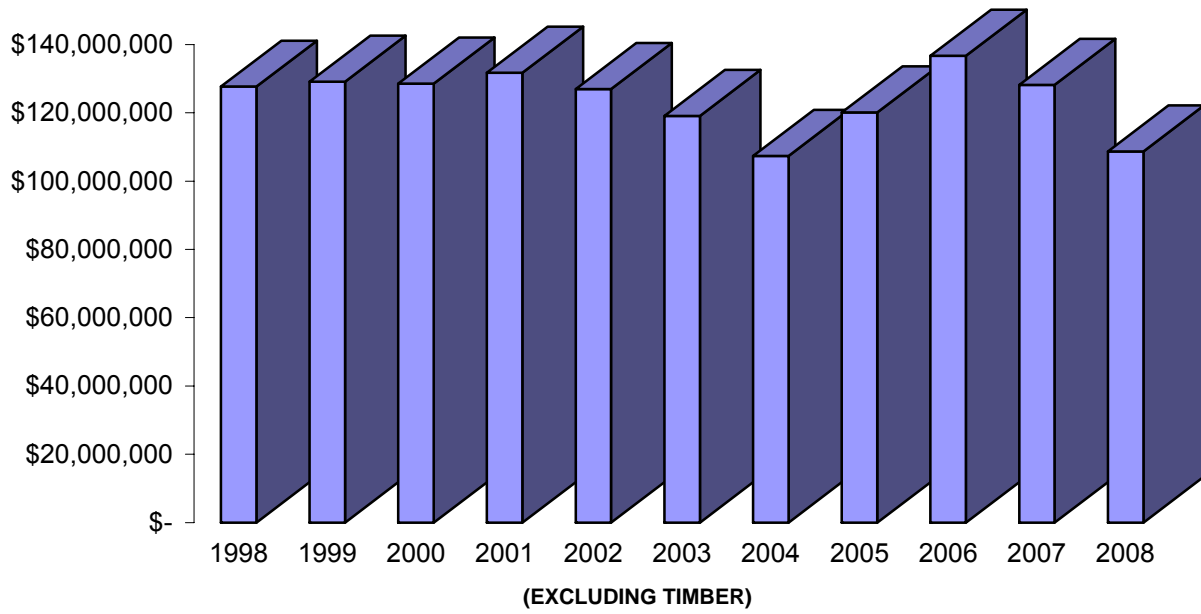
*"Whoever makes two ears of corn,
or two blades of grass to grow
where only one grew before,
deserves better of mankind,
and does more essential service
to his country than the whole
race of politicians put together."
-Jonathan Swift*

PEST EXCLUSION

Parcel Post & Truck Shipment Inspections

SHIPMENTS INSPECTED	EXOTIC PESTS INTERCEPTED	SHIPMENTS REJECTED
1,133	29	27

**VALUE OF MENDOCINO COUNTY AGRICULTURE
1998 - 2008**

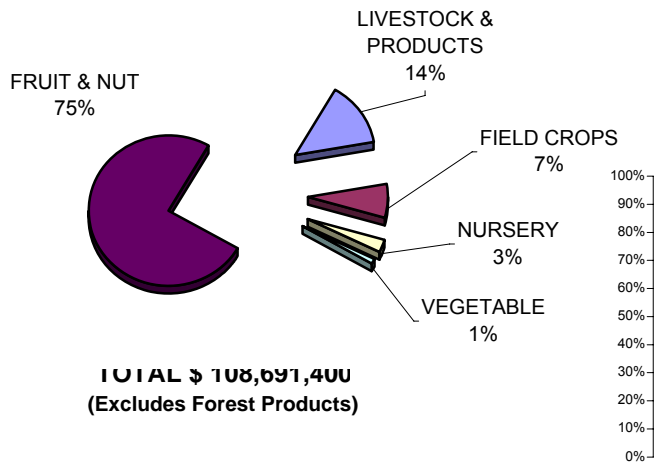


2008 MILLION DOLLAR CROPS

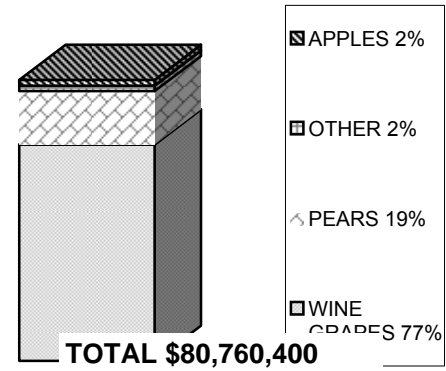
TIMBER	\$	67,004,008
WINE GRAPES	\$	62,047,200
BARTLETT PEARS	\$	11,874,800
CATTLE & CALVES	\$	5,943,000
MILK	\$	5,728,000
NURSERY	\$	3,704,600
PASTURE	\$	2,025,700
APPLES	\$	1,900,500
BOSC PEARS	\$	1,670,800
RED PEARS	\$	1,467,100
PASTURE, IRRIGATED	\$	1,026,000

SHARES OF AGRICULTURAL VALUE MENDOCINO COUNTY 2008

ALL AGRICULTURE (EXCLUDING TIMBER)



FRUIT & NUT CROPS



SUMMARY OF PRODUCTION

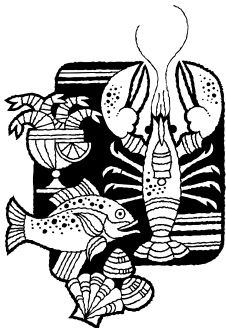
COMMODITY	2008	2007
FRUITS AND NUTS	\$ 80,760,400	\$ 95,765,700
LIVESTOCK PRODUCTION	\$ 7,179,700	\$ 7,719,800
LIVESTOCK AND POULTRY PRODUCTS	\$ 8,153,500	\$ 8,619,700
NURSERY PRODUCTION	\$ 3,704,600	\$ 3,583,500
VEGETABLE CROPS	\$ 900,000	\$ 1,100,000
FIELD CROPS	\$ 7,993,200	\$ 11,416,900
FOREST PRODUCTS	\$ 67,004,008	\$ 74,594,400
TOTALS	\$ 175,695,408	\$ 202,800,000

SUPPLEMENT TO CROP REPORT COMMERCIAL FISH CATCH

COMMODITY	TOTAL LBS	TOTAL VALUE
CRAB, DUNGENESS	687,900	\$ 1,833,890
SABLEFISH	807,542	\$ 1,578,191
SEA URCHIN, RED	2,627,718	\$ 1,802,403
SOLE, DOVER	1,433,058	\$ 557,500
SOLE, PETRALE	452,933	\$ 510,870
THORNEYHEAD, LONGSPINE	379,089	\$ 163,530
THORNYHEAD, SHORTSPINE	133,715	\$ 127,140
ROCKFISH, GROUP SLOPE	128,559	\$ 81,607
ROCKFISH, CHILLPEPPER	92,431	\$ 81,491
ROCKFISH, GOPHER	9,077	\$ 59,762
MICELLANEOUS	451,274	\$ 316,570
TOTALS	7,203,296	\$ 7,112,954

COMMERCIAL FISH CATCH TEN YEAR VALUE COMPARISON

YEAR	POUNDS	VALUE
2008	7,203,296	\$ 7,112,954
2007	5,931,839	\$ 7,038,220
2006	5,468,557	\$ 5,763,048
2005	6,603,170	\$ 6,615,121
2004	7,058,011	\$ 7,941,313
2003	9,615,994	\$ 10,993,736
2002	10,666,604	\$ 8,260,477
2001	8,390,895	\$ 7,488,535
2000	9,138,022	\$ 8,430,200
1999	9,206,159	\$ 7,427,600

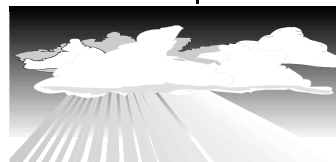


Source - State of California Department of Fish and Game
All figures are rounded - 2006 figures are preliminary

UKIAH 114 YEAR RAINFALL DATA (FROM UKIAH FIRE DEPARTMENT RECORDS)

<u>SEASON</u>	<u>TOTAL</u>	<u>SEASON</u>	<u>TOTAL</u>	<u>SEASON</u>	<u>TOTAL</u>
1894-95	52.55	1932-33	24.71	1970-71	38.31
1895-96	40.85	1933-34	25.21	1971-72	25.61
1896-97	43.34	1934-35	33.05	1972-73	42.09
1897-98	19.83	1935-36	37.83	1973-74	57.09
1898-99	27.60	1936-37	29.24	1974-75	38.60
1899-00	33.69	1937-38	55.13	1975-76	18.75
1900-01	37.09	1938-39	22.86	1976-77	14.20
1901-02	45.07	1939-40	41.01	1977-78	53.66
1902-03	34.55	1940-41	56.92	1978-79	30.23
1903-04	54.73	1941-42	48.21	1979-80	44.79
1904-05	42.93	1942-43	40.41	1980-81	26.82
1905-06	44.75	1943-44	26.19	1981-82	55.82
1906-07	48.64	1944-45	31.74	1982-83	70.19
1907-08	29.67	1945-46	36.11	1983-84	43.76
1908-09	57.39	1946-47	25.90	1984-85	27.40
1909-10	29.89	1947-48	32.93	1985-86	48.68
1910-11	32.99	1948-49	27.53	1986-87	25.25
1911-12	25.73	1949-50	29.75	1987-88	30.22
1912-13	33.40	1950-51	42.28	1988-89	31.48
1913-14	54.85	1951-52	47.74	1989-90	26.91
1914-15	49.28	1952-53	45.06	1990-91	26.00
1915-16	34.80	1953-54	35.74	1991-92	31.38
1916-17	30.23	1954-55	25.63	1992-93	50.49
1917-18	23.43	1955-56	51.09	1993-94	23.73
1918-19	37.23	1956-57	32.36	1994-95	58.88
1919-20	19.05	1957-58	58.87	1995-96	44.10
1920-21	47.94	1958-59	26.42	1996-97	39.07
1921-22	28.74	1959-60	32.60	1997-98	63.95
1922-23	30.35	1960-61	34.89	1998-99	34.77
1923-24	16.19	1961-62	31.46	1999-00	33.81
1924-25	47.44	1962-63	44.45	2000-01	26.68
1925-26	26.33	1963-64	24.96	2001-02	31.74
1926-27	47.32	1964-65	50.84	2002-03	49.70
1927-28	34.94	1965-66	35.46	2003-04	38.99
1928-29	24.44	1966-67	43.16	2004-05	41.46
1929-30	31.08	1967-68	32.95	2005-06	60.39
1930-31	20.06	1968-69	51.28	2006-07	26.15
1931-32	27.67	1969-70	48.71	2007-08	31.64

FISCAL YEAR DATA



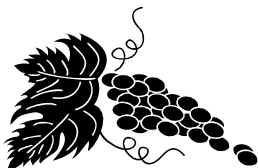
FIVE YEAR VALUE COMPARISON

ALL COMMODITIES

YEAR	FRUIT/ NUTS	LIVESTOCK AND POULTRY				VEG PROD.	FIELD CROPS	TOTAL
		LIVESTOCK PRODUCTION	POULTRY PRODUCTS	NURSERY PROD.				
2008	\$ 80,760,400	\$ 7,179,700	\$ 8,153,500	\$ 3,704,600	\$ 900,000	\$ 7,993,200	\$ 108,691,400	
2007	\$ 95,765,700	\$ 7,719,800	\$ 8,619,700	\$ 3,583,500	\$ 1,100,000	\$ 11,416,900	\$ 128,205,600	
2006	\$ 107,151,500	\$ 8,158,500	\$ 5,685,400	\$ 3,278,900	\$ 954,600	\$ 11,907,100	\$ 137,136,000	
2005	\$ 87,090,300*	\$ 10,467,700	\$ 6,584,800	\$ 3,770,300	\$ 1,239,800	\$ 10,881,200	\$ 120,134,100	
2004	\$79,079,300	\$7,385,900	\$6,179,500	\$3,670,900	\$1,329,000	\$9,765,500	\$107,410,100	

TOP TEN GRAPE VARIETY VALUES 2008

VARIETY	Acres Bearing	Acres Total	TONS	VALUE PER TON	TOTAL VALUE
Chardonnay	4389	4656	14,058.7	\$1,191.48	\$16,750,659
Pinot Noir	2206	2251	5,544.1	\$2,482.72	\$13,764,447
Cabernet Sauvignon	2410	2432	5,964.0	\$1,399.10	\$8,344,232
Zinfandel	1975	2010	4,935.1	\$1,422.05	\$7,017,959
Merlot	1727	1727	4,180.0	\$1,070.25	\$4,473,645
Sauvignon Blanc	817	822	3,343.3	\$1,047.82	\$3,503,177
Petite Sirah	512	523	1,366.4	\$1,574.84	\$2,151,186
Syrah	727	735	1,627.1	\$1,660.50	\$2,701,799
Gewurtzraminer	225	230	878.7	\$1,035.78	\$910,139
Carignane	403	403	818.6	\$884.07	\$723,699



"Wine is sunlight, held together by water"
-Galileo

MENDOCINO COUNTY'S 2004-2008 EXPORT TRADE PARTNERS

Mendocino County commodities have been exported to these thirty-one countries.



"Agriculture, for an honorable and high-minded man," says Xenophon, "is the best of all occupations and arts by which men procure the means of living."

-Amos Bronson Alcott

MENDOCINO COUNTY
Tony Linegar, Agricultural Commissioner

WINE GRAPE VALUE VS TIMBER VALUE

