

CROP REPORT

M
E
N
D
O
C
I
N
O



C
O
U
N
T
Y

2007

**“The clearest way into the Universe is through a forest wilderness.”
-John Muir**

COVER CREDITS

Photo courtesy of Christy Bengston
Taken in March, 2005 at Montgomery Woods

Montgomery Woods State Natural Reserve is an old growth Redwood park located thirteen miles west of Ukiah. Coastal Redwoods grow up to 370’ in height. For a short time Montgomery Woods was home to the tallest known tree in the world. However, there have been several taller trees discovered. Montgomery Woods recently survived the June 21, 2008 lightning fires.

DAVE BENGSTON
Agricultural Commissioner
Sealer of Weights & Measures

E-MAIL
bengstod@co.mendocino.ca.us

TELEPHONE
(707) 463-4208



COUNTY OF MENDOCINO
DEPARTMENT OF
AGRICULTURE
890 N BUSH STREET

TONY LINEGAR
Assistant Agricultural Commissioner
Assistant Sealer of Weights & Measures

E-MAIL
linegart@co.mendocino.ca.us

FAX
(707) 463-0240

A.G. KAWAMURA, SECRETARY
CALIFORNIA DEPARTMENT OF FOOD AND AGRICULTURE

and

THE HONORABLE BOARD OF SUPERVISORS OF MENDOCINO COUNTY

Michael Delbar – District 1	John Pinches – District 3
Jim Wattenburger – CHAIR, District 2	Kendall Smith– District 4
David Colfax – District 5	

It is my pleasure to submit the 2007 Mendocino County Crop Report.

The **total gross agricultural value** for commodities produced in 2007 was **\$202,800,000** a 9.4% decrease from 2006. The leading category was **winegrapes** with a value of **\$75,348,300**. Agricultural production, excluding timber, had a value of **\$128,205,600**, which is a decrease from 2006 of 7.6%.

Timber was the second leading crop. The value of **\$74,594,400** was a decrease of 13% from 2006. Milk set an all time value record of \$6,202,700.

This crop report represents only the gross value to the growers. It does not reflect any net income, costs of production, or packinghouse charges.

I would like to express my gratitude to all the people, in particular Jennifer Krauss and Caralyn Gulseth, without whose help this report would not be possible. They include all the growers, packers, processors, my staff, the U.C. Cooperative Extension Service, and other government agencies.

Respectfully submitted,

Dave Bengston
Agricultural Commissioner/Sealer

**MENDOCINO COUNTY
DEPARTMENT OF AGRICULTURE**

DAVID BENGSTON
Agricultural Commissioner
Sealer of Weights and Measures

ANNUAL CROP REPORT FOR YEAR 2007

STAFF

TONY LINEGAR Assistant Agricultural Commissioner
Assistant Sealer of Weights & Measures

RAY HARRIE Ag/Measurement Standards Specialist III

DIANE CURRY Ag/Measurement Standards Specialist II

ANDREA HARDY Ag/Measurement Standards Specialist III

JENNIFER KRAUSS ... Office Manager

CARALYN GULSETH Staff Assistant II



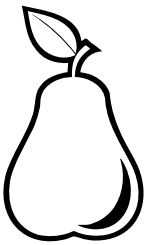
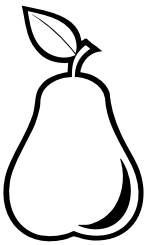
SEASONAL INSPECTORS

Sheryl Greene, Chris Towne

BOARD OF SUPERVISORS

MICHAEL M. DELBAR, District 1
JIM WATTENBURGER. District 2
JOHN PINCHES.. District 3
KENDALL SMITH, District 4
J. DAVID COLFAX, District 5

FRUIT AND NUT CROPS

COMMODITY	YEAR	BEARING ACREAGE	TONS PER ACRE	PRODUCTION IN TONS	\$ PER TON	VALUE
APPLES, TOTAL	2007	265	10.5	2,783	\$ 510.00	\$ 1,420,200.00
	2006	273	9.8	2,675	\$ 494.00	\$ 1,322,100.00
<i>Fresh</i>	2007			1,809	\$ 679.00	\$ 1,228,300.00
	2006			1,471	\$ 766.00	\$ 1,127,100.00
<i>Other</i>	2007			974	\$ 197.00	\$ 191,900.00
<i>(Dried, Juice, etc.)</i>	2006			1,204	\$ 162.00	\$ 195,000.00
WINE GRAPES, TOTAL	2007	16,342	3.8	61,589	\$ 1,223.00	\$ 75,348,300.00
	2006	16,142	4.4	70,866	\$ 1,237.00	\$ 87,661,500.00
<i>White</i>	2007	5,901	4.3	25,387		
<i>Varieties</i>	2006	5,866	5.5	32,072		
<i>Red</i>	2007	10,401	3.5	36,202		
<i>Varieties</i>	2006	10,276	3.8	38,794		
PEARS, TOTAL	2007	2,047	18.5	37,903	\$ 447.00	\$ 16,927,200.00
	2006*	2,129	19.9	42,324	\$ 384.00	\$ 16,270,500.00
<i>Bartlett (1)</i>	2007	1,813	19	34,412	\$ 408.00	\$ 14,049,800.00
	2006*	1,902	20.2	38,391	\$ 359.00	\$ 13,788,000.00
<i>Canning</i>	2007			17,949	\$ 235.00	\$ 4,218,000.00
	2006*			20,525	\$ 240.00	\$ 4,926,000.00
<i>Fresh (1)</i>	2007			12,911	\$ 745.00	\$ 9,618,700.00
	2006*			11,456	\$ 740.00	\$ 8,477,400.00
<i>Other</i>	2007			3,552	\$ 60.00	\$ 213,100.00
<i>(Baby Food</i>	2006*			6,410	\$ 60.00	\$ 384,600.00
<i>Dried, Paste)</i>						
<i>Bosc (1)</i>	2007	126	8.1	1,707	\$ 860.00	\$ 1,468,000.00
	2006	123	22.0	2,706	\$ 600.00	\$ 1,623,600.00
<i>Red (1)</i>	2007	108	16.5	1,784	\$ 790.00	\$ 1,409,400.00
	2006	104	11.8	1,227	\$ 700.00	\$ 858,900.00
MISC. TOTAL (2)	2007	330				\$ 2,070,000.00
	2006	324				\$ 2,000,000.00
TOTALS	2007	18,984				\$ 95,765,700.00
	2006	18,868				* \$ 107,254,100.00

(1) The fresh values listed for pears are FOB values. The actual average prices (farm gate values) to the growers for 2006 were: Bartlett \$181, Bosc \$158, and Reds \$218.

for 2007 were: Bartlett \$205, Bosc \$622, and Reds \$419.

(2) Miscellaneous includes berries, cherries, chestnuts, olives, other pears, peaches, persimmons, pistachios and walnuts.

*2006 Amended

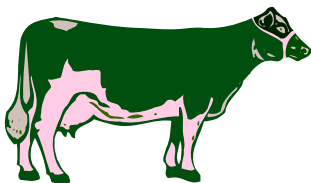
FRUIT, NUT, AND GRAPEVINE ACREAGE

CROP	ACRES BEARING	ACRES NON-BEARING	TOTAL
APPLES	265	0	265
WINE GRAPES, TOTAL	16,439	723	17,162
Red	10,462	400	10,862
White	5,977	321	6,298
Rootstock	0	2	2
OLIVES	59	26	85
PEARS, TOTAL	1,903	19	1,922
Bartlett	1,638	5	1,643
Red	108	0	108
Bosc	126	9	135
Other	31	5	36
WALNUTS, ENGLISH	44	0	44
MISCELLANEOUS*	91	8	99
TOTALS	18,801	776	19,577

*Miscellaneous includes: Berries, cherries, chestnuts, guava, peaches, persimmons, pistachios, plums, and table grapes.

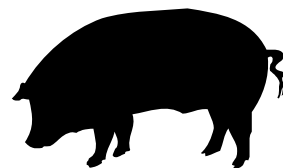
LIVESTOCK INVENTORIES

COMMODITY	2007	2006
All Cattle and Calves	17,000	17,000
Beef Cows and Heifers, 2 years and older	10,000	11,000
Milk Cows	1,500	1,400
Sheep and Lambs, all	11,000	11,500
Swine	1,600	1,800



"If we estimate dignity by immediate usefulness,
agriculture is undoubtedly the first and
noblest science."

-Samuel Johnson



LIVESTOCK PRODUCTION

COMMODITY	YEAR	NO. OF HEAD	TOTAL CWT** LIVE WT.	\$ PER	\$ VALUES
CATTLE AND CALVES	2007	9,543	76,344	\$83.07	\$6,342,600
	2006	10,769	91,752	\$75.63	\$6,939,000
SHEEP AND LAMBS	2007	3,550	3,018	\$114.00	\$344,100
	2006	3,094	2,352	\$109.00	\$256,400
SWINE	2007	2,792	3,753	\$48.80	\$183,100
	2006	2,270	2,987	\$47.90	\$143,100
MISCELLANEOUS*	2007				\$850,000
	2006				\$820,000
TOTALS	2007				\$7,719,800
	2006				\$8,158,500

*Miscellaneous includes goats, pigeons, poultry, rabbits, turkeys, and aquaculture (fish farms).

**CWT= 100 lbs.

NOTE: 2006 - 35% of sheep producers reported \$26,034 in predator losses.

LIVESTOCK AND POULTRY PRODUCTS

COMMODITY	YEAR	PRODUCTION IN LBS.	PER UNIT	\$ VALUE
MILK	2007	316,786 CWT.	\$19.58	\$6,202,700
	2006	262,182 CWT.	\$13.07	\$3,427,000
WOOL	2007	46,500 LB.	\$1.44	\$67,000
	2006	42,037 LB.	\$1.39	\$58,400
MISCELLANEOUS*	2007			\$2,350,000
	2006			\$2,200,000
TOTALS	2007			\$8,619,700
	2006			\$5,685,400

*Miscellaneous includes apiary, eggs, emus, cheese, manure, and ostriches.



NURSERY PRODUCTION

COMMODITY	YEAR	GREENHOUSE SQUARE FEET	FIELD ACRES	\$ VALUES
Nursery*	2007	195,034	80	\$3,578,000
	2006	261,000	63	\$3,263,900
Christmas Trees	2007	N/A	N/A	\$5,500
	2006	N/A	29	\$15,000
TOTALS	2007	195,039	80	\$3,583,500
	2006	261,000	92	\$3,278,900



*Includes turf and cut flowers

VEGETABLE CROPS

COMMODITY	YEAR	ACRES	\$ VALUES
Miscellaneous Vegetables*	2007	320	\$1,100,000
	2006	320	\$954,600



*Includes beans, sweet corn, garlic, herbs, melons, peas, potatoes, squash, tomatoes, etc.

FIELD CROPS

COMMODITY	YEAR	ACRES	YIELD/ ACRE	TOTAL YIELD	PER AUM	\$ VALUES
IRRIGATED PASTURE	2007	6,000	9.00 AUM*	54,000	\$19.00	\$1,026,000
	2006	6,000	9.00 AUM*	54,000	\$19.00	\$1,026,000
PASTURE, other (grassland, coast bench)	2007	365,000	.90 AUM*	328,500	\$11.10	\$3,646,400
	2006	365,000	.98 AUM*	357,700	\$11.10	\$3,970,500
RANGE	2007	355,000	.63 AUM*	223,650	\$7.80	\$1,744,500
	2006	355,000	.69 AUM*	244,950	\$7.80	\$1,910,600
MISCELLANEOUS**	2007					\$5,000,000
	2006					\$5,000,000
TOTALS	2007					\$11,416,900
	2006					\$11,907,100

*AUM means Annual Unit Month (food required to feed a 1,000 pound steer for one month).

**Miscellaneous includes alfalfa, barley, beans, corn, oats, and hay.



FOREST PRODUCTS

TIMBER	2007	2006
Log Production (board feet)	103,031,000	110,168,000
Total Stumpage Value, net	\$43,647,900	\$53,378,700
Total Value at Mill, gross	\$74,594,400	\$86,481,900

- 1) Calendar year 2007 experienced a 6% decrease in harvest yields for Mendocino County from the previously reported year. The harvest level essentially represents 100% extraction from private lands.
- 2) The average price for stumpage based on the information provided by the Board of Equalization is approximately \$424/mbf for the timber harvested within Mendocino County. This reflects a 12% decrease increase from the 2006 value of \$485/mbf. The most probable cause of this decline is due primarily to the continued downturn in Douglas fir markets.
- 3) The combined value of delivered value at the mill includes both stumpage (\$424/mbf) and logging and hauling costs (\$300/mbf) for a total value of \$724/mbf = \$74,594,444.
- 4) Mendocino County is ranked fifth in the state of timber producing counties behind Humboldt, Siskiyou, Shasta and Plumas counties.
- 5) Mendocino County ranks fourth in the state in timber values. The three top ranking counties are Humboldt, Siskiyou and Shasta.

Data based on information from Gregory A. Giusti, U.C. Cooperative Extension.

10 YEAR COMPARISON (LOG PRODUCTION)

YEAR	Log Production (Board Feet)	Value at Mill (Gross)
2007	103,031,000	\$74,594,400
2006	110,168,000	\$86,481,900
2005	120,841,000	\$89,441,000
2004	109,548,000	\$66,605,200
2003	112,568,000	\$68,496,100
2002	97,722,000	\$53,942,500
2001	117,596,000	\$80,072,500
2000	156,101,000	\$145,798,400
1999	227,515,000	\$151,069,000
1998	225,878,000	\$126,943,400



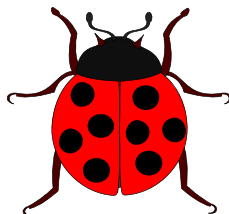
SUSTAINABLE AGRICULTURE IN 2007

ORGANIC FARMS

NUMBER OF FARMS	CROPS	ACRES
71	Wine grapes	3,557
22	Apples	166
15	Pears	246
25	Miscellaneous Vegetables	358
34	Miscellaneous Fruit & Nut	195
19	Nursery & Cut Flowers	10
6	Pasture	3,066
10	Miscellaneous	105
202	TOTAL	7,703
7	Biodynamic Wine Grapes	690

BIOLOGICAL CONTROL

BIO-CONTROL AGENT		SCOPE OF PROGRAM
Bull Thistle Gall Fly		3 Sites
Gorse Weevil		Generally Distributed
Gorse Spider Mite		Generally Distributed
Italian Thistle Seed Head Weevil		Widely Distributed
Klamath Weed Beetles		Widely Distributed
Klamath Weed Root Borers		Widely Distributed
Puncture Vine Seed Weevil		Generally Distributed
Puncture Vine Stem Weevil		Generally Distributed
Tansy Ragwort Cinnabar Moth		Established
Tansy Ragwort Flea Beetle		Established (2 new release sites in 2006)
Yellow Starthistle Seed Head Weevil		Widely Distributed
Yellow Starthistle Gall Forming Fly		Widely Distributed
Yellow Starthistle Hairy Weevil		Generally Distributed
Ash Whitefly Stingless Wasp		Established
Peacock Fly #2 (<i>Chaetorellia succinea</i>)		Widely Distributed
Yellow Starthistle Rust (<i>Puccinea jaceae</i>)		6 Sites (Failed to establish)



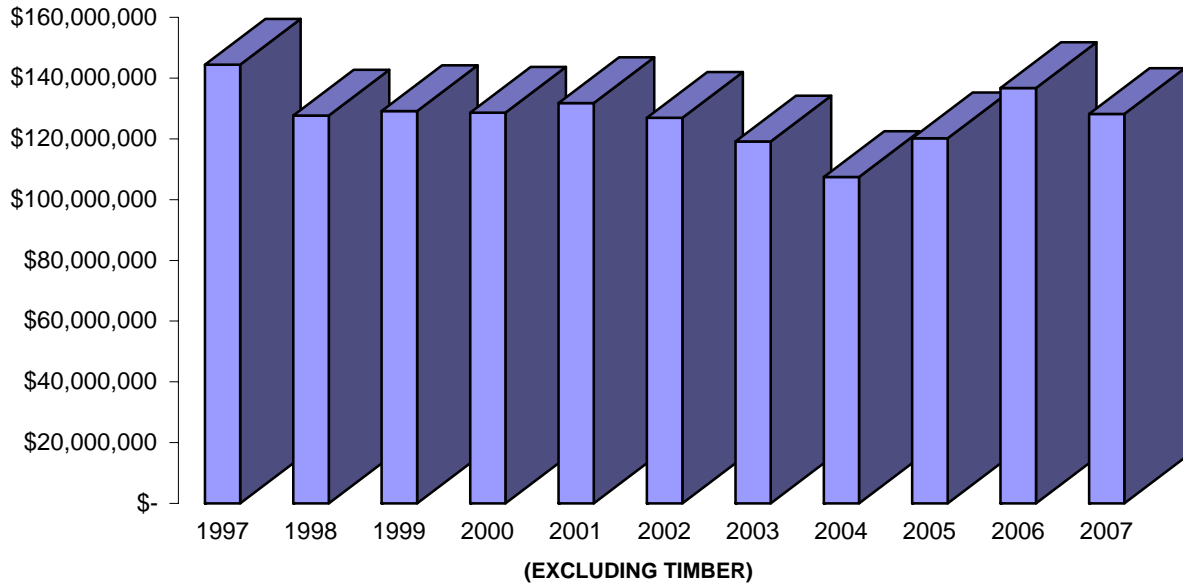
*"Whoever makes two ears of corn,
or two blades of grass to grow
where only one grew before,
deserves better of mankind,
and does more essential service
to his country than the whole
race of politicians put together."
-Jonathan Swift*

PEST EXCLUSION

Parcel Post & Truck Shipment Inspections

SHIPMENTS INSPECTED	EXOTIC PESTS INTERCEPTED	SHIPMENTS REJECTED
1,704	21	25

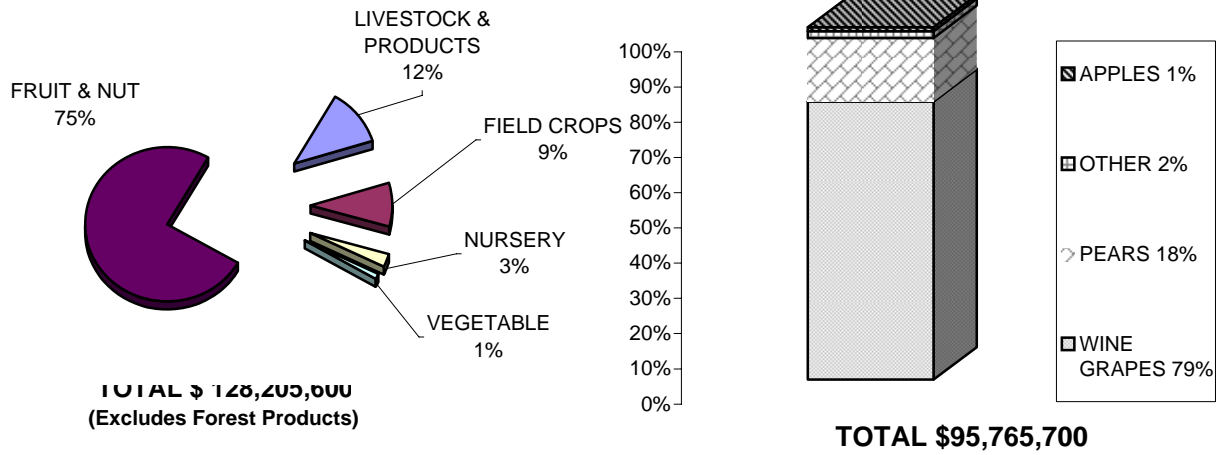
VALUE OF MENDOCINO COUNTY AGRICULTURE 1997 - 2007



2007 MILLION DOLLAR CROPS

WINE GRAPES	\$	75,348,300
TIMBER	\$	74,594,400
BARTLETT PEARS	\$	14,049,800
CATTLE & CALVES	\$	6,342,600
MILK	\$	6,202,700
PASTURE	\$	3,646,400
NURSERY	\$	3,583,500
RANGE	\$	1,744,500
BOSC PEARS	\$	1,468,000
APPLES	\$	1,420,200
RED PEARS	\$	1,409,400
PASTURE, IRRIGATED	\$	1,026,000

SHARES OF AGRICULTURAL VALUE MENDOCINO COUNTY 2007



SUMMARY OF PRODUCTION

COMMODITY	2007	2006
FRUITS AND NUTS	\$ 95,765,700	\$ 107,254,100
LIVESTOCK PRODUCTION	\$ 7,719,800	\$ 8,158,500
LIVESTOCK AND POULTRY PRODUCTS	\$ 8,619,700	\$ 5,685,400
NURSERY PRODUCTION	\$ 3,583,500	\$ 3,278,900
VEGETABLE CROPS	\$ 1,100,000	\$ 954,600
FIELD CROPS	\$ 11,416,900	\$ 11,907,100
FOREST PRODUCTS	\$ 74,594,400	\$ 86,481,900
TOTALS	\$ 202,800,000	\$ 223,720,500

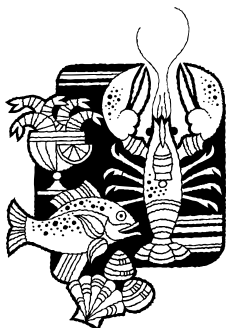
*2006 Amended

SUPPLEMENT TO CROP REPORT COMMERCIAL FISH CATCH

COMMODITY	YEAR	TOTAL LBS	TOTAL VALUE
SALMON, CHINOOK	2007	354,601	\$ 1,809,624
	2006	287,911	\$ 1,419,564
CRAB, DUNGENESS	2007	646,007	\$ 1,509,383
	2006	890,096	\$ 1,456,813
SABLEFISH	2007	738,921	\$ 1,158,892
	2006	966,784	\$ 1,148,053
SEA URCHIN, RED	2007	1,556,451	\$ 908,024
	2006	1,046,108	\$ 410,764
SOLE, PETRALE	2007	464,265	\$ 500,969
	2006	162,769	\$ 171,294
SOLE, DOVER	2007	1,139,662	\$ 446,268
	2006	1,106,027	\$ 415,469
THORNYHEAD, LONGSPINE	2007	251,537	\$ 117,236
	2006	471,240	\$ 243,593
THORNYHEAD, SHORTSPINE	2007	101,889	\$ 91,844
	2006	143,470	\$ 146,555
ROCKFISH, GOPHER	2007	9,442	\$ 59,841
	2006	9,761	\$ 64,841
LINGCOD	2007	48,102	\$ 59,753
	2006	17,855	\$ 23,055
MICELLANEOUS	2007	620,962	\$ 376,386
	2006	374,677	\$ 239,628
TOTALS	2007	5,931,839	\$ 7,038,220
	2006	5,468,557	\$ 5,763,048

COMMERCIAL FISH CATCH TEN YEAR VALUE COMPARISON

YEAR	POUNDS	VALUE
2007	5,931,839	\$ 7,038,220
2006	5,468,557	\$ 5,763,048
2005	6,603,170	\$ 6,615,121
2004	7,058,011	\$ 7,941,313
2003	9,615,994	\$ 10,993,736
2002	10,666,604	\$ 8,260,477
2001	8,390,895	\$ 7,488,535
2000	9,138,022	\$ 8,430,200
1999	9,206,159	\$ 7,427,600
1998	9,437,912	\$ 6,111,000

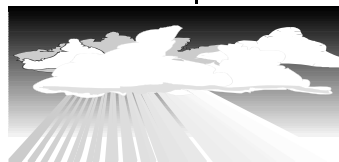


Source - State of California Department of Fish and Game
All figures are rounded - 2006 figures are preliminary

UKIAH 114 YEAR RAINFALL DATA (FROM UKIAH FIRE DEPARTMENT RECORDS)

<u>SEASON</u>	<u>TOTAL</u>	<u>SEASON</u>	<u>TOTAL</u>	<u>SEASON</u>	<u>TOTAL</u>
1894-95	52.55	1932-33	24.71	1970-71	38.31
1895-96	40.85	1933-34	25.21	1971-72	25.61
1896-97	43.34	1934-35	33.05	1972-73	42.09
1897-98	19.83	1935-36	37.83	1973-74	57.09
1898-99	27.60	1936-37	29.24	1974-75	38.60
1899-00	33.69	1937-38	55.13	1975-76	18.75
1900-01	37.09	1938-39	22.86	1976-77	14.20
1901-02	45.07	1939-40	41.01	1977-78	53.66
1902-03	34.55	1940-41	56.92	1978-79	30.23
1903-04	54.73	1941-42	48.21	1979-80	44.79
1904-05	42.93	1942-43	40.41	1980-81	26.82
1905-06	44.75	1943-44	26.19	1981-82	55.82
1906-07	48.64	1944-45	31.74	1982-83	70.19
1907-08	29.67	1945-46	36.11	1983-84	43.76
1908-09	57.39	1946-47	25.90	1984-85	27.40
1909-10	29.89	1947-48	32.93	1985-86	48.68
1910-11	32.99	1948-49	27.53	1986-87	25.25
1911-12	25.73	1949-50	29.75	1987-88	30.22
1912-13	33.40	1950-51	42.28	1988-89	31.48
1913-14	54.85	1951-52	47.74	1989-90	26.91
1914-15	49.28	1952-53	45.06	1990-91	26.00
1915-16	34.80	1953-54	35.74	1991-92	31.38
1916-17	30.23	1954-55	25.63	1992-93	50.49
1917-18	23.43	1955-56	51.09	1993-94	23.73
1918-19	37.23	1956-57	32.36	1994-95	58.88
1919-20	19.05	1957-58	58.87	1995-96	44.10
1920-21	47.94	1958-59	26.42	1996-97	39.07
1921-22	28.74	1959-60	32.60	1997-98	63.95
1922-23	30.35	1960-61	34.89	1998-99	34.77
1923-24	16.19	1961-62	31.46	1999-00	33.81
1924-25	47.44	1962-63	44.45	2000-01	26.68
1925-26	26.33	1963-64	24.96	2001-02	31.74
1926-27	47.32	1964-65	50.84	2002-03	49.70
1927-28	34.94	1965-66	35.46	2003-04	38.99
1928-29	24.44	1966-67	43.16	2004-05	41.46
1929-30	31.08	1967-68	32.95	2005-06	60.39
1930-31	20.06	1968-69	51.28	2006-07	26.15
1931-32	27.67	1969-70	48.71	2007-08	31.64

FISCAL YEAR DATA



FIVE YEAR VALUE COMPARISON

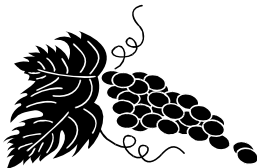
ALL COMMODITIES

YEAR	FRUIT/ NUTS	LIVESTOCK PRODUCTION	LIVESTOCK AND POULTRY PRODUCTS	NURSERY PROD.	VEG PROD.	FIELD CROPS	TOTAL
2007	\$ 95,765,700	\$ 7,719,800	\$ 8,619,700	\$ 3,583,500	\$ 1,100,000	\$ 11,416,900	\$ 128,205,600
2006*	\$ 107,151,500	\$ 8,158,500	\$ 5,685,400	\$ 3,278,900	\$ 954,600	\$ 11,907,100	\$ 137,136,000 *
2005	\$ 87,090,300*	\$ 10,467,700	\$ 6,584,800	\$ 3,770,300	\$ 1,239,800	\$ 10,881,200	\$ 120,134,100*
2004	\$79,079,300	\$7,385,900	\$6,179,500	\$3,670,900	\$1,329,000	\$9,765,500	\$107,410,100
2003	\$87,186,150	\$9,200,600	\$6,921,200	\$3,266,200	\$1,162,000	\$10,881,200	\$118,617,350

*2006 Amended

TOP TEN GRAPE VARIETY VALUES 2007

VARIETY	Acres Bearing	Acres Total	TONS	VALUE PER TON	TOTAL VALUE
Chardonnay	4326	4563	18,108.4	\$1,064.36	\$19,273,856
Pinot Noir	2008	2194	5,966.3	\$2,348.90	\$14,014,242
Cabernet Sauvignon	2488	2506	9,541.2	\$1,256.78	\$11,991,189
Zinfandel	1954	2012	6,073.3	\$1,344.10	\$8,163,123
Merlot	1817	1877	6,542.3	\$996.97	\$6,522,477
Syrah	719	749	3,105.9	\$1,405.20	\$4,364,411
Sauvignon Blanc	786	836	3,759.6	\$1,020.25	\$3,835,732
Petite Sirah	501	527	1,883.0	\$1,480.43	\$2,787,650
Gewurtzraminer	217	226	970.3	\$1,158.20	\$1,123,801
Carignane	412	412	1,354.5	\$759.62	\$1,028,905



"Wine is sunlight, held together by water"
-Galileo

MENDOCINO COUNTY'S 2004-2007 EXPORT TRADE PARTNERS

Mendocino County commodities have been exported to these thirty-one countries.

Angola



Germany



Portugal



Argentina



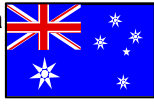
Guatemala



Russia



Australia



Holland



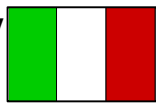
Scotland



Bolivia



Italy



So. Africa



Brazil



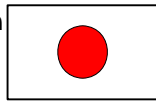
Lithuania



Canada



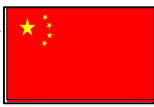
Japan



Switzerland



China



Mexico



Taiwan



Chile



Morocco



UK



England



The Netherlands



El Salvador



New Zealand



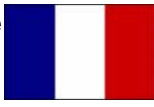
Finland



Panama



France



Poland



"Agriculture, for an honorable and high-minded man," says Xenophon, "is the best of all occupations and arts by which men procure the means of living."

-Amos Bronson Alcott

MENDOCINO COUNTY
David Bengston, Agricultural Commissioner

WINE GRAPE VALUE VS TIMBER VALUE

