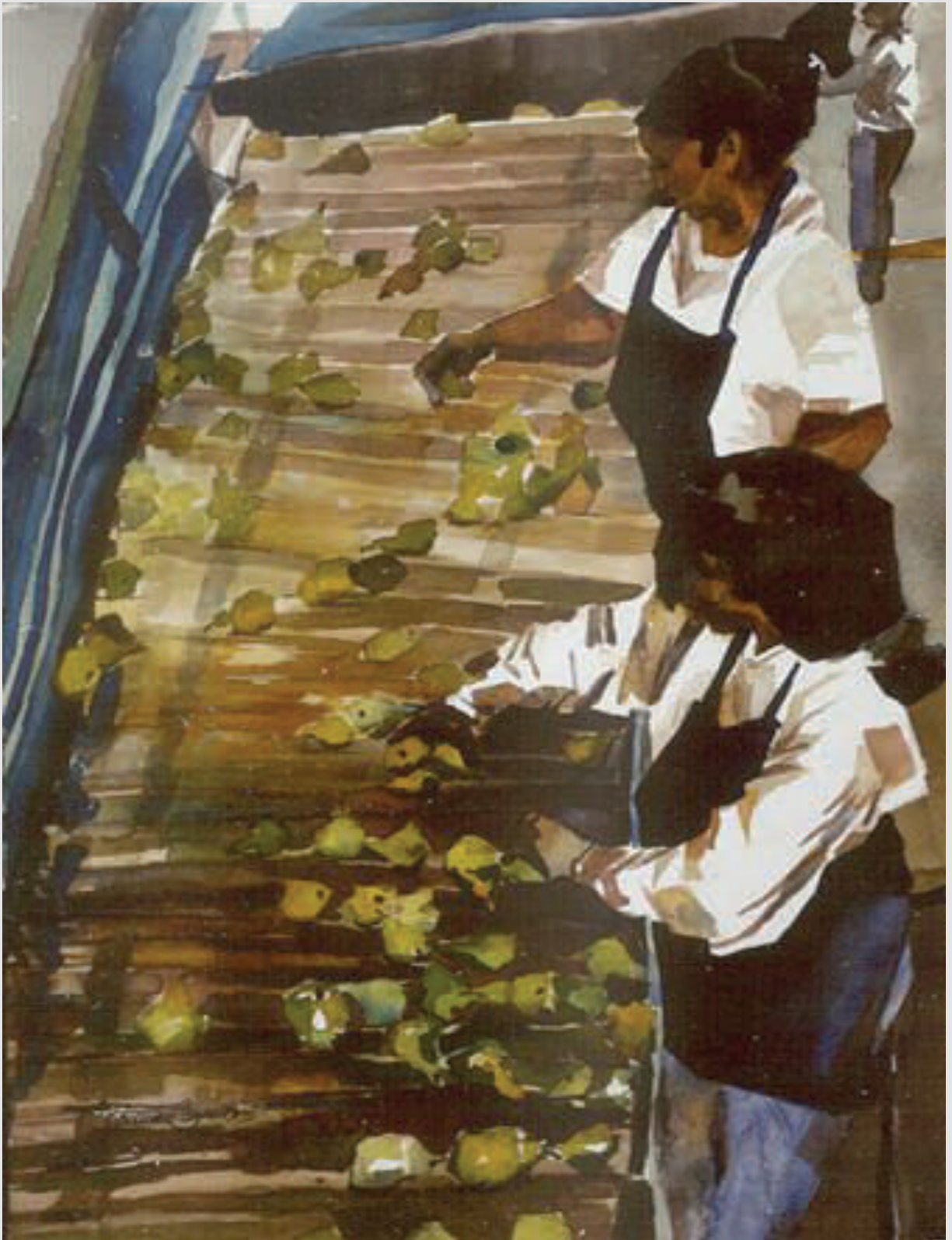


M
E
N
D
O
C
I
N
O



C
O
U
N
T
Y

CROP REPORT 2005

Commercial pear production in Mendocino County began in the 1870's. The rich alluvial soils of the Russian River drainage combined with the sunny days and cool nights in Mendocino's inland valleys provide an ideal situation for growing high quality pears. Despite a gradual reduction in acreage due to increased competition and the decline of canneries, pears remain Mendocino's third highest value crop, and play an important role in the county's economy. There are currently three pear packing sheds operating in the county.

COVER CREDITS:
COVER ART: "PEAR PAIR"©2003
ARTIST: PATRICIA BARNETT
EDITING: NICK OLIVER

**A.G. KAWAMURA, SECRETARY
CALIFORNIA DEPARTMENT OF FOOD AND AGRICULTURE**

and

THE HONORABLE BOARD OF SUPERVISORS OF MENDOCINO COUNTY

Michael Delbar – District 1

Hal Wagenet – District 3

Jim Wattenburger – District 2

Kendall Smith – District 4

CHAIR, David Colfax – District 5

It is my pleasure to submit the 2005 Mendocino County Crop Report

The **total gross agricultural value** for commodities produced in 2005 was **\$209,559,100**, a 20% increase over 2004. The leading category was **timber** with a value of **\$89,441,000**. Agricultural production, excluding timber, had a value of **\$120,118,100**, which is an increase of 12% over 2004.

Winegrapes, the second leading crop rebounded after seven years of declining values. The value of **\$72,557,900** was an increase of 21% from 2004. All other categories increased in value except vegetable production.

This crop report represents only the gross value to the growers. It does not reflect any net income, costs of production, or packinghouse charges.

I would like to express my sincere gratitude to all the people, in particular Kim Gradin and Caralyn Gulseth, without whose help this report would not be possible. They include all the growers, packers, processors, my staff, the U.C. Cooperative Extension Service, and other government agencies.

Respectfully submitted,

David Bengston
Agricultural Commissioner/Sealer

**MENDOCINO COUNTY
DEPARTMENT OF AGRICULTURE**

DAVID BENGSTON
Agricultural Commissioner
Sealer of Weights and Measures

ANNUAL CROP REPORT FOR YEAR 2005

STAFF

TONY LINEGAR Assistant Agricultural Commissioner
Assistant Sealer of Weights & Measures

RAY HARRIEAg/Measurement Standards Specialist III

NICK OLIVER Ag/Measurement Standards Specialist III

ANDREA HARDYAg/Measurement Standards Specialist III

KIMBERLY GRADIN Office Manager

CARALYN GULSETH Staff Assistant II

SEASONAL INSPECTORS

Sheryl Greene, Chris Towne, Fred Bellows, Richard Campbell, John Woods



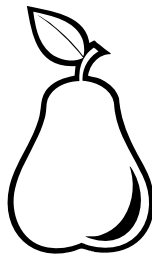
PART -TIME WORKERS

Ana Chavez

BOARD OF SUPERVISORS

MICHAEL M. DELBAR, District 1
JIM WATTENBURGER. District 2
HAL WAGENET. District 3
KENDALL SMITH. District 4
J. DAVID COLFAX, **CHAIR** District 5

FRUIT AND NUT CROPS

COMMODITY	YEAR	BEARING ACREAGE	PER ACRE	PRODUCTION IN TONS	\$ PER TON	VALUE
APPLES, TOTAL	2005	284	7	2,000.0	506	\$1,012,000
	2004	220	10.6	2,332.0	553	\$1,290,700
<i>Fresh</i>	2005			1,456.0	630	\$917,300
	2004			1,749.0	680	\$1,189,300
<i>Other (Dried, Juice, etc.)</i>	2005			544.0	174	\$94,700
	2004			583.0	174	\$101,400
WINE GRAPES, TOTAL	2005	16,084	3.9	61,962.3	1,171	\$72,557,900
	2004	15,608	3.3	52,251.5	1,151	\$60,141,500
<i>White Varieties</i>	2005	5,780	4.9	28,068.3		
	2004	5,699	3.5	19,746.6		
<i>Red Varieties</i>	2005	10,304	3.3	33,894.0		
	2004	9,909	3.3	32,504.9		
PEARS, TOTAL	2005	2,115	13.4	28,410.0	412	\$11,704,400
	2004	2,140	17.5	37,466.0	424	\$15,897,100
Bartlett (1)	2005	1,901	13.7	26,069.0	390	\$10,169,400
	2004	1,926	17.4	33,438.0	394	\$13,169,400
<i>Canning</i>	2005			12,932.0	244	\$3,155,400
	2004			18,503.0	205	\$3,793,100
<i>Fresh (1)</i>	2005			9,046.0	750	\$6,784,500
	2004			11,057.0	812	\$8,978,300
<i>Other (Baby Food Dried, Paste)</i>	2005			3,825.0	60	\$229,500
	2004			3,878.0	54	\$209,400
Bosc (1)	2005	120	11.6	1,392.0	830	\$1,155,400
	2004	120	17.9	2,148.0	810	\$1,739,900
Red (1)	2005	94	10.1	949.0	400	\$379,600
	2004	94	20	1,880.0	530	\$996,400
MISC. TOTAL (2)	2005	260				\$1,800,000
	2004	240				\$1,750,000
TOTALS	2005	18,743				\$87,074,300
	2004	18,743				\$79,079,300

(1) The fresh values listed for pears are FOB values. The actual average prices (farm gate values) to the growers for 2005 were: Bartlett \$235, Bosc \$598, and Reds \$200. for 2004 were: Bartlett \$195, Bosc \$512, and Reds \$392.

(2) Miscellaneous includes berries, cherries, chestnuts, olives, other pears, peaches, persimmons, pistachios and walnuts.

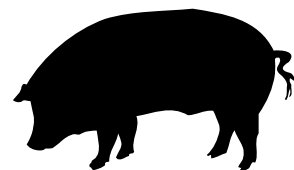
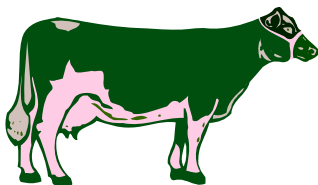
FRUIT, NUT, AND GRAPEVINE ACREAGE

CROP	ACRES BEARING	ACRES NON-BEARING	TOTAL
APPLES	284	0	284
WINE GRAPES, TOTAL	16,084	540	16,624
Red	10,304	356	10,660
White	5,780	183	5,963
Rootstock	0	1	1
PEARS, TOTAL	2,160	13	2,173
Bartlett	1,901	0	1,901
Red	94	0	94
Bosc	120	13	133
Other	45	0	45
WALNUTS, ENGLISH	50	0	50
MISCELLANEOUS*	104	8	112
TOTALS	18,682	561	19,243

*Miscellaneous includes: Berries, cherries, chestnuts, guava, peaches, persimmons, pistachios, plums, olives, and table grapes.

LIVESTOCK INVENTORIES

COMMODITY	2005	2004
All Cattle and Calves	18,000	21,000
Beef Cows and Heifers, 2 years and older	10,000	10,000
Milk Cows	1,500	1,200
Sheep and Lambs, all	11,500	11,500
Swine	1,800	1,800



LIVESTOCK PRODUCTION

COMMODITY	YEAR	NO. OF HEAD	TOTAL CWT** LIVE WT.	\$ PER	\$ VALUES
CATTLE AND CALVES	2005	13,879	117,176	\$78.18	\$9,161,800
	2004	10,121	80,968	\$76.19	\$6,168,700
SHEEP AND LAMBS	2005	3,383	2,977	\$109.00	\$324,500
	2004	2,200	1,980	\$136.00	\$269,300
SWINE	2005	2,270	2,987	\$50.70	\$151,400
	2004	2,270	2,987	\$49.50	\$147,900
MISCELLANEOUS*	2005				\$830,000
	2004				\$800,000
TOTALS	2005				\$10,467,700
	2004				\$7,385,900

*Miscellaneous includes goats, pigeons, poultry, rabbits, turkeys, and aquaculture (fish farms).

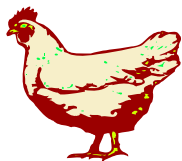
**CWT= 100 lbs.

NOTE: 2005 - 33% of sheep producers reported \$20,505 in predator losses.

LIVESTOCK AND POULTRY PRODUCTS

COMMODITY	YEAR	PRODUCTION IN LBS.	PER UNIT	\$ VALUE
MILK	2005	272,674 CWT.	\$15.18	\$4,139,200
	2004	247,462 CWT.	\$15.59	\$3,857,900
WOOL	2005	51,255 LB.	\$0.89	\$45,600
	2004	31,766 LB.	\$1.11	\$35,300
MISCELLANEOUS*	2005			\$2,400,000
	2004			\$2,286,300
TOTALS	2005			\$6,584,800
	2004			\$6,179,500

*Miscellaneous includes apiary, eggs, emus, cheese, manure, and ostriches.



NURSERY PRODUCTION

COMMODITY	YEAR	GREENHOUSE SQUARE FEET	FIELD ACRES	\$ VALUES
Nursery*	2005	283,000	71	\$3,751,600
	2004	310,000	66	\$3,642,200
Christmas Trees	2005	N/A	25	\$18,700
	2004	N/A	31	\$28,700
TOTALS	2005	283,000	96	\$3,770,300
	2004	310,000	97	\$3,670,900



*Includes turf and cut flowers

VEGETABLE CROPS

COMMODITY	YEAR	ACRES	\$ VALUES
Miscellaneous Vegetables*	2005	320	\$1,239,800
	2004	320	\$1,329,000



*Includes beans, sweet corn, garlic, herbs, melons, peas, potatoes, squash, tomatoes, etc.

FIELD CROPS

COMMODITY	YEAR	ACRES	YIELD/ ACRE	TOTAL YIELD	PER AUM	\$ VALUES
IRRIGATED PASTURE	2005	6,000	9.00 AUM*	54,000	\$19.00	\$1,026,000
	2004	6,000	9.00 AUM*	54,000	\$19.00	\$1,026,000
PASTURE, other (grassland, coast bench)	2005	365,000	.85 aum	310,250	\$11.10	\$3,443,800
	2004	365,000	.68 aum	248,200	\$11.10	\$2,755,000
RANGE	2005	355,000	.60 AUM*	213,000	\$7.80	\$1,661,400
	2004	355,000	.50 aum	177,000	\$7.80	\$1,384,500
MISCELLANEOUS**	2005					\$4,750,000
	2004					\$4,600,000
TOTALS	2005					\$10,881,200
	2004					\$9,765,500

*AUM means Annual Unit Month (food required to feed a 1,000 pound steer for one month).

**Miscellaneous includes alfalfa, barley, beans, corn, oats, and hay.



FOREST PRODUCTS

TIMBER	2005	2004
Log Production (board feet)	120,841,000	109,548,000
Total Stumpage Value, net	\$53,913,800	\$40,995,100
Total Value at Mill, gross	\$89,441,000	\$66,605,200

- 1) Calendar year 2005 experienced a 10% increase in harvest yields for Mendocino County from the previously reported year. The harvest level essentially represents 100% extraction from private lands reflecting the California Department of Forestry and Fire Protection's inability to harvest timber from Jackson . Demonstration State Forest.
- 2) The average price for stumpage based on the information provided by the Board of Equalization is approximately \$446/mbf for the timber harvested within Mendocino County. This again reflects a modest increase from the 2004 value of \$375/mbf.
- 3) The combined value of delivered value at the mill includes both stumpage (\$446/mbf) and logging and hauling costs (\$294/mbf) for a total value of \$740/mbf=\$89,441,057.
- 4) Mendocino County is ranked fourth in the state of timber producing counties behind Humboldt, Siskiyou and Shasta Counties.
- 5) However, given the high economic value associated with redwood, Mendocino once again ranks second in the state in total timber value (Humboldt is ranked first).

Data based on information from Gregory A. Giusti, U.C. Cooperative Extension.

10 YEAR COMPARISON (LOG PRODUCTION)

YEAR	Log Production (Board Feet)	Value at Mill (Gross)
2005	120,841,000	\$89,441,000
2004	109,548,000	\$66,605,200
2003	112,568,000	\$68,496,100
2002	97,722,000	\$53,942,500
2001	117,596,000	\$80,072,500
2000	156,101,000	\$145,798,400
1999	227,515,000	\$151,069,000
1998	225,878,000	\$126,943,400
1997	243,866,000	\$131,200,000
1996	275,589,000	\$160,117,000

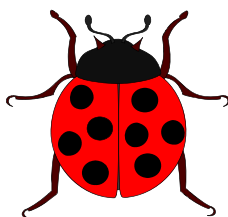


SUSTAINABLE AGRICULTURE IN 2005 ORGANIC FARMS

NUMBER OF FARMS	CROPS	ACRES
49	Wine grapes	2,820
27	Apples	145
15	Pears	282
36	Miscellaneous Vegetables	95
43	Miscellaneous Fruit & Nut	100
22	Nursery & Cut Flowers	18
192	TOTAL	3,460

BIOLOGICAL CONTROL

BIO-CONTROL AGENT	SCOPE OF PROGRAM
Bull Thistle Gall Fly	3 Sites
Gorse Weevil	Generally Distributed
Gorse Spider Mite	Generally Distributed
Italian Thistle Seed Head Weevil	Widely Distributed
Klamath Weed Beetles	Widely Distributed
Klamath Weed Root Borers	Widely Distributed
Puncture Vine Seed Weevil	Generally Distributed
Puncture Vine Stem Weevil	Generally Distributed
Tansy Ragwort Cinnabar Moth	Established
Tansy Ragwort Flea Beetle	Established
Yellow Starthistle Seed Head Weevil	Widely Distributed
Yellow Starthistle Gall Forming Fly	Widely Distributed
Yellow Starthistle Hairy Weevil	Generally Distributed
Ash Whitefly Stingless Wasp	Established
Peacock Fly #2 (<i>Chaetorellia succinea</i>)	Widely Distributed
Yellow Starthistle Rust (<i>Puccinea jaceae</i>)	6 Sites

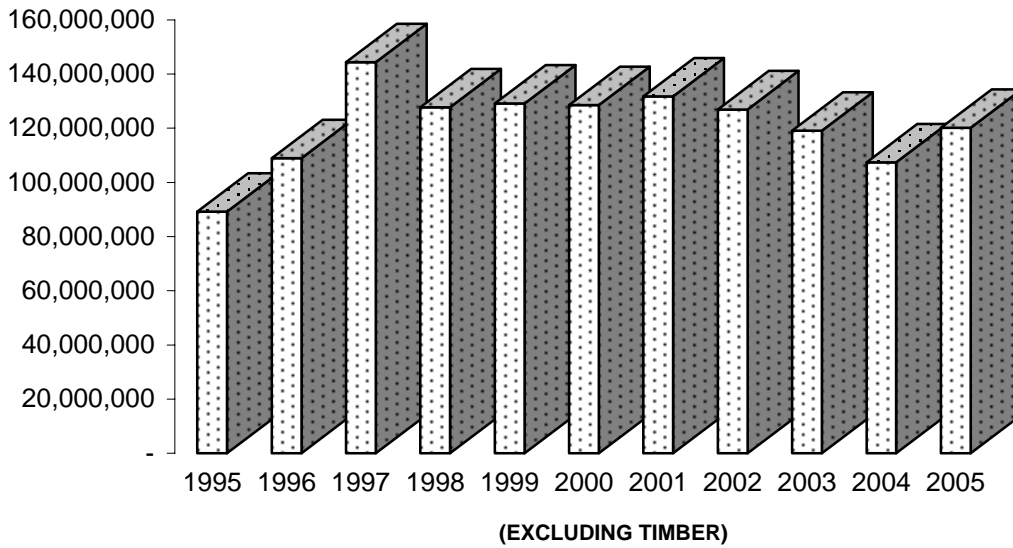


PEST EXCLUSION

Parcel Post & Truck Shipment Inspections

SHIPMENTS INSPECTED	EXOTIC PESTS INTERCEPTED	SHIPMENTS REJECTED
1,879	16	22

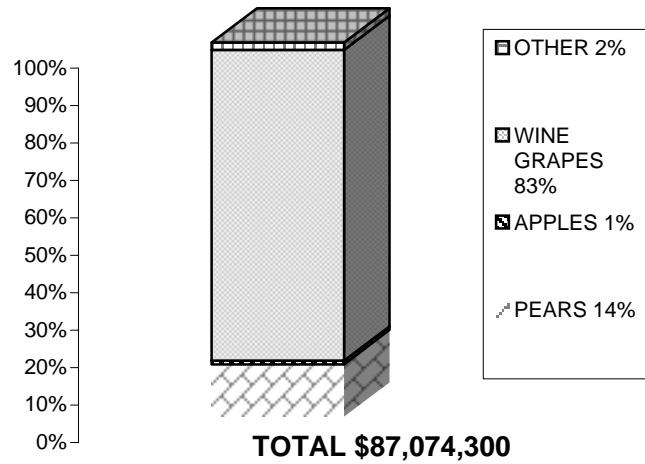
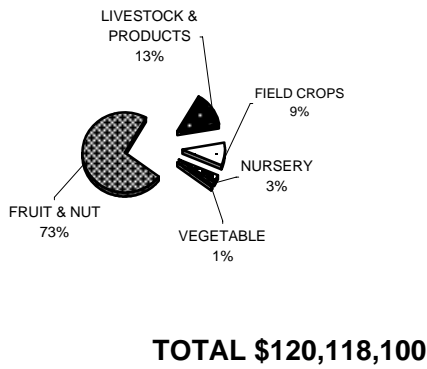
**VALUE OF MENDOCINO COUNTY AGRICULTURE
1995 - 2005**



2005 MILLION DOLLAR CROPS

TIMBER	\$	89,441,000
WINE GRAPES	\$	72,557,900
BARTLETT PEARS	\$	10,169,400
CATTLE & CALVES	\$	9,161,800
MILK	\$	4,139,200
NURSERY	\$	3,770,300
PASTURE	\$	3,443,800
RANGE	\$	1,661,400
VEGETABLE	\$	1,239,800
BOSC PEARS	\$	1,155,400
PASTURE, IRRIGATED	\$	1,026,000
APPLES	\$	1,012,000

SHARES OF AGRICULTURAL VALUE MENDOCINO COUNTY 2005



SUMMARY OF PRODUCTION

COMMODITY	2005	2004
FRUITS AND NUTS	\$ 87,074,300	\$ 79,079,300
LIVESTOCK PRODUCTION	\$ 10,467,700	\$ 7,385,900
LIVESTOCK AND POULTRY PRODUCTS	\$ 6,684,800	\$ 6,179,500
NURSERY PRODUCTION	\$ 3,770,300	\$ 3,670,900
VEGETABLE CROPS	\$ 1,239,800	\$ 1,329,000
FIELD CROPS	\$ 10,881,200	\$ 9,765,500
FOREST PRODUCTS	\$ 89,441,000	\$ 66,605,200
TOTALS	\$ 209,559,100	\$ 174,015,300

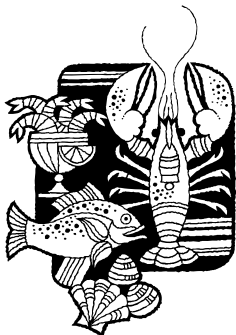
SUPPLEMENT TO CROP REPORT COMMERCIAL FISH CATCH

COMMODITY	YEAR	TOTAL LBS	TOTAL VALUE
SALMON, CHINOOK	2005	900,207	\$ 2,729,330
	2004	1,290,698	\$ 3,445,611
SABLEFISH	2005	1,261,363	\$ 1,461,814
	2004	948,236	\$ 1,216,133
SOLE, DOVER	2005	1,603,143	\$ 608,228
	2004	1,395,853	\$ 528,571
CRAB DUNGENESS	2005	282,522	\$ 438,837
	2004	887,688	\$ 1,403,592
SEA URCHIN, RED	2005	1,249,409	\$ 436,919
	2004	1,249,252	\$ 483,446
THORNYHEAD, LONGSPINE	2005	474,218	\$ 174,862
	2004	343,384	\$ 135,414
THORNYHEAD, SHORTSPINE	2005	147,477	\$ 140,522
	2004	115,408	\$ 87,865
SOLE, PETRALE*	2005	141,168	\$ 139,511
	2004	13,287	\$ 13,346
CABEZON	2005	14,447	\$ 67,965
	2004	23,484	\$ 98,216
ROCKFISH, GOPHER*	2005	10,326	\$ 61,071
	2004	8,414	\$ 48,312
MICELLANEOUS	2005	518,890	\$ 356,062
	2004	782,307	\$ 480,807
TOTALS	2005	6,603,170	\$ 6,615,121
	2004	7,058,011	\$ 7,941,313

*Sole, Petrale & Rockfish, Gopher made top 10 in 2005

COMMERCIAL FISH CATCH TEN YEAR VALUE COMPARISON

YEAR	POUNDS	VALUE
2005	6,603,170	\$ 6,615,121
2004	7,058,011	\$ 7,941,313
2003	9,615,994	\$ 10,993,736
2002	10,666,604	\$ 8,260,477
2001	8,390,895	\$ 7,488,535
2000	9,138,022	\$ 8,430,200
1999	9,206,159	\$ 7,427,600
1998	9,437,912	\$ 6,111,000
1997	16,058,585	\$ 11,520,900
1996	12,371,000	\$ 9,070,000



Source - State of California Department of Fish and Game
All figures are rounded - 2004 figures are preliminary

UKIAH 111 YEAR RAINFALL DATA (FROM UKIAH FIRE DEPARTMENT RECORDS)

<u>SEASON</u>	<u>TOTAL</u>	<u>SEASON</u>	<u>TOTAL</u>	<u>SEASON</u>	<u>TOTAL</u>
1894-95	52.55	1931-32	27.67	1968-69	51.28
1895-96	40.85	1932-33	24.71	1969-70	48.71
1896-97	43.34	1933-34	25.21	1970-71	38.31
1897-98	19.83	1934-35	33.05	1971-72	25.61
1898-99	27.60	1935-36	37.83	1972-73	42.09
1899-00	33.69	1936-37	29.24	1973-74	57.09
1900-01	37.09	1937-38	55.13	1974-75	38.60
1901-02	45.07	1938-39	22.86	1975-76	18.75
1902-03	34.55	1939-40	41.01	1976-77	14.20
1903-04	54.73	1940-41	56.92	1977-78	53.66
1904-05	42.93	1941-42	48.21	1978-79	30.23
1905-06	44.75	1942-43	40.41	1979-80	44.79
1906-07	48.64	1943-44	26.19	1980-81	26.82
1907-08	29.67	1944-45	31.74	1981-82	55.82
1908-09	57.39	1945-46	36.11	1982-83	70.19
1909-10	29.89	1946-47	25.90	1983-84	43.76
1910-11	32.99	1947-48	32.93	1984-85	27.40
1911-12	25.73	1948-49	27.53	1985-86	48.68
1912-13	33.40	1949-50	29.75	1986-87	25.25
1913-14	54.85	1950-51	42.28	1987-88	30.22
1914-15	49.28	1951-52	47.74	1988-89	31.48
1915-16	34.80	1952-53	45.06	1989-90	26.91
1916-17	30.23	1953-54	35.74	1990-91	26.00
1917-18	23.43	1954-55	25.63	1991-92	31.38
1918-19	37.23	1955-56	51.09	1992-93	50.49
1919-20	19.05	1956-57	32.36	1993-94	23.73
1920-21	47.94	1957-58	58.87	1994-95	58.88
1921-22	28.74	1958-59	26.42	1995-96	44.10
1922-23	30.35	1959-60	32.60	1996-97	39.07
1923-24	16.19	1960-61	34.89	1997-98	63.95
1924-25	47.44	1961-62	31.46	1998-99	34.77
1925-26	26.33	1962-63	44.45	1999-00	33.81
1926-27	47.32	1963-64	24.96	2000-01	26.68
1927-28	34.94	1964-65	50.84	2001-02	31.74
1928-29	24.44	1965-66	35.46	2002-03	49.70
1929-30	31.08	1966-67	43.16	2003-04	38.99
1930-31	20.06	1967-68	32.95	2004-05	41.46

FISCAL YEAR DATA



FIVE YEAR VALUE COMPARISON

ALL COMMODITIES

YEAR	LIVESTOCK AND						TOTAL
	FRUIT/ NUTS	LIVESTOCK PRODUCTION	POULTRY PRODUCTS	NURSERY PROD.	VEG PROD.	FIELD CROPS	
2005	87,074,300	10,467,700	6,684,800	3,770,300	1,239,800	10,881,200	120,118,100
2004	\$79,079,300	\$7,385,900	\$6,179,500	\$3,670,900	\$1,329,000	\$9,765,500	\$107,410,100
2003	\$87,186,150	\$9,200,600	\$6,921,200	\$3,266,200	\$1,162,000	\$10,881,200	\$118,617,350
2002	\$98,352,400	\$8,862,900	\$6,079,600	\$3,267,000	\$1,050,000	\$9,341,400	\$126,953,300
2001	\$104,300,400	\$8,757,700	\$6,478,600	\$2,790,000	\$1,111,500	\$8,316,600	\$131,754,800

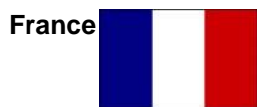
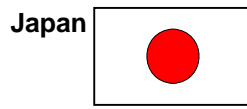
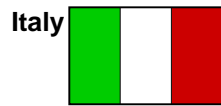
TOP TEN GRAPE VARIETY VALUES 2005

VARIETY	TONS	VALUE PER TON	TOTAL VALUE
Chardonnay	21,966.1	\$1,077.26	\$23,663,200
Cabernet Sauvignon	9,075.6	\$1,293.21	\$11,736,656
Merlot	7,406.8	\$1,199.28	\$8,882,827
Pinot Noir	4,385.7	\$1,853.92	\$8,130,737
Zinfandel	5,932.2	\$1,135.60	\$6,736,606
Syrah	2,513.7	\$1,289.91	\$3,242,447
Petite Sirah	1,846.7	\$1,467.99	\$2,710,937
Sauvignon Blanc	3,067.3	\$935.47	\$2,869,367
Carignane	1,218.1	\$734.36	\$894,524
Sangiovese	546.2	\$1,646.52	\$899,329



MENDOCINO COUNTY'S 2004-2006 EXPORT TRADE PARTNERS

Mendocino County commodities have been exported to these twenty-five countries.



MENDOCINO COUNTY
David Bengston, Agricultural Commissioner

WINE GRAPE VALUE VS TIMBER VALUE

