

MENDOCINO COUNTY CROP REPORT 2004



The last standing hop kiln in the Ukiah Valley is pictured on the cover. Recently preserved by owners Charles and Nancy Sawyer, the kiln is a landmark reminder of the valley's agricultural heritage. Built in the early 1900's, the redwood-clad kiln was one of dozens in the county used for drying hops. The old kiln sits at the northern end of the valley, between the Russian River and Highway 101. There are only two hop kilns known to remain in the entire county. The other is at the Milone Family Winery south of Hopland.

Hops were first grown in Mendocino County as early as 1858. Up until Prohibition the county was a major producer of hops. During this time, Mendocino County became the US center of hop production. The town of Hopland, in southern Mendocino County, was named for the vine that drove the local economy. After World War II, pears and wine grapes replaced hops.

COVER CREDITS:

Photographer: Andrea Hardy
Courtesy of Charles and Nancy Sawyer
Editing: Caralyn Gulseth

**A.G. KAWAMURA, SECRETARY
CALIFORNIA DEPARTMENT OF FOOD AND AGRICULTURE**

and

THE HONORABLE BOARD OF SUPERVISORS OF MENDOCINO COUNTY

The **total gross agricultural value** for commodities produced in 2004 was **\$174,015,300**, a 7% decrease from 2003. The leading category was **timber** with a value of **\$66,605,200**. Agricultural production, excluding timber, had a value of **\$107,410,100**, which is a decrease of 9% from 2003.

Winegrapes, the second leading crop continued to decrease for the 4th year in a row. The value of **\$60,141,500** was a decrease of 15% from 2003. The only categories that did show an increase from 2003 were nursery and vegetable production.

This crop report represents only the gross value to the growers. It does not reflect any net income, costs of production, or packinghouse charges.

I would like to express my sincere gratitude to all the people, in particular Kim Gradin and Caralyn Gulseth, without whose help this report would not be possible. They include all the growers, packers, processors, my staff, the U.C. Cooperative Extension Service, and other government agencies.

Respectfully submitted,

David Bengston
Agricultural Commissioner/Sealer

**MENDOCINO COUNTY
DEPARTMENT OF AGRICULTURE**

DAVID BENGSTON
Agricultural Commissioner
Sealer of Weights and Measures

ANNUAL CROP REPORT FOR YEAR 2004

STAFF

TONY LINEGAR Assistant Agricultural Commissioner
Assistant Sealer of Weights & Measures

RAY HARRIE Ag/Measurement Standards Specialist III

NICK OLIVER Ag/Measurement Standards Specialist III

ANDREA HARDY Ag/Measurement Standards Specialist III

KIMBERLY GRADIN Office Manager

CARALYN GULSETH Staff Assistant II

SEASONAL INSPECTORS

Richard Campbell, Merle Carlson, Fred Turnbull, Fred Bellows, Chris Towne



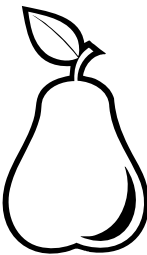
VOLUNTEERS

Samara Andrade
Sarah Garcia

BOARD OF SUPERVISORS

MICHAEL M. DELBAR, **CHAIR** District 1
JIM WATTENBURGER. District 2
HAL WAGENET. District 3
KENDALL SMITH. District 4
J. DAVID COLFAX District 5

FRUIT AND NUT CROPS

COMMODITY	YEAR	BEARING ACREAGE	PER ACRE	PRODUCTION IN TONS	\$ PER TON	VALUE
APPLES, TOTAL	2004	220	10.6	2,332.0	553	\$1,290,700
	2003	200	9.5	1,896.0	380	\$720,500
<i>Fresh</i>	2004			1,749.0	680	\$1,189,300
	2003			891.0	635	\$565,750
<i>Other (Dried, Juice, etc.)</i>	2004			583.0	174	\$101,400
	2003			1,005.0	154	\$154,750
WINE GRAPES, TOTAL	2004	15,608	3.3	52,251.5	1,151	\$60,141,500
	2003	15,576	3.7	57,960.1	1,214	\$70,360,700
<i>White Varieties</i>	2004	5,699	3.5	19,746.6		
	2003	5,870	4.7	27,362.8		
<i>Red Varieties</i>	2004	9,909	3.3	32,504.9		
	2003	9,706	3.2	30,957.3		
PEARS, TOTAL	2004	2,140	17.5	37,466.0	424	\$15,897,100
	2003	2,316	17.0	39,540.0	369	\$14,554,950
Bartlett (1)	2004	1,926	17.4	33,438.0	394	\$13,160,800
	2003	1,994	17.8	35,430.0	350	\$12,385,950
<i>Canning</i>	2004			18,503.0	205	\$3,793,100
	2003			18,533.0	200	\$3,706,600
<i>Fresh (1)</i>	2004			11,057.0	812	\$8,978,300
	2003			11,050.0	759	\$8,387,000
<i>Other (Baby Food Dried, Paste)</i>	2004			3,878.0	54	\$209,400
	2003			5,847.0	50	\$292,350
Bosc (1)	2004	120	17.9	2,148.0	810	\$1,739,900
	2003	126	18	2,268.0	625	\$1,417,500
Red (1)	2004	94	20	1,880.0	530	\$996,400
	2003	98	18.8	1,842.0	408	\$751,500
MISC. TOTAL (2)	2004	240				\$1,750,000
	2003	260				\$1,550,000
TOTALS	2004	18,208				\$79,079,300
	2003	18,352				\$87,186,150

(1) The fresh values listed for pears are FOB values. The actual average prices (farm gate values) to the growers for 2004 were: Bartlett \$195, Bosc \$512, and Reds \$392.
for 2003 were: Bartlett \$181, Bosc \$260, and Reds \$222.

(2) Miscellaneous includes berries, cherries, chestnuts, olives, other pears, peaches, persimmons, pistachios and walnuts.

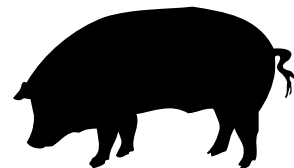
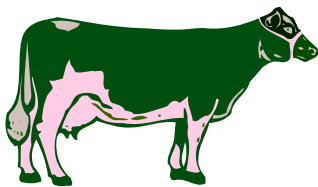
FRUIT, NUT, AND GRAPEVINE ACREAGE

CROP	ACRES BEARING	ACRES NON-BEARING	TOTAL
APPLES	281	3	284
WINE GRAPES, TOTAL	15,608	501	16,109
Red	9,909	255	10,164
White	5,699	245	5,944
Rootstock	0	1	1
PEARS, TOTAL	2,189	13	2,202
Bartlett	1,926	0	1,926
Red	94	0	94
Bosc	120	13	133
Other	49	0	49
WALNUTS, ENGLISH	50	0	50
MISCELLANEOUS*	200	7	207
TOTALS	18,328	524	18,852

*Miscellaneous includes: Berries, cherries, chestnuts, guava, peaches, persimmons, pistachios, plums, olives, and table grapes.

LIVESTOCK INVENTORIES

COMMODITY	2004	2003
All Cattle and Calves	21,000	20,000
Beef Cows and Heifers, 2 years and older	10,000	10,000
Milk Cows	1,200	1,500
Sheep and Lambs, all	11,500	11,500
Swine	1,800	1,800



LIVESTOCK PRODUCTION

COMMODITY	YEAR	NO. OF HEAD	TOTAL CWT** LIVE WT.	\$ PER	\$ VALUES
CATTLE AND CALVES	2004	10,121	80,968	\$76.19	\$6,168,700
	2003	16,776	134,208	\$60.54	\$8,125,400
SHEEP AND LAMBS	2004	2,200	1,980	\$136.00	\$269,300
	2003	2,241	2,017	\$96.00	\$193,600
SWINE	2004	2,270	2,987	\$49.50	\$147,900
	2003	2,270	2,987	\$35.70	\$106,600
MISCELLANEOUS*	2004				\$800,000
	2003				\$775,000
TOTALS	2004				\$7,385,900
	2003				\$9,200,600

*Miscellaneous includes goats, pigeons, poultry, rabbits, turkeys, and aquaculture (fish farms).

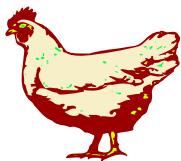
**CWT= 100 lbs.

NOTE: 2004 - Sheep producers reported \$24,812 in predatory losses.

LIVESTOCK AND POULTRY PRODUCTS

COMMODITY	YEAR	PRODUCTION IN LBS.	PER UNIT	\$ VALUE
MILK	2004	247,462 CWT.	\$15.59	\$3,857,900
	2003	370,099 CWT.	\$12.52	\$4,633,000
WOOL	2004	31,766 LB.	\$1.11	\$35,300
	2003	32,360 LB.	\$1.18	\$38,200
MISCELLANEOUS*	2004			\$2,286,300
	2003			\$2,250,000
TOTALS	2004			\$6,179,500
	2003			\$6,921,200

*Miscellaneous includes apiary, eggs, emus, cheese, manure, and ostriches.



NURSERY PRODUCTION

COMMODITY	YEAR	GREENHOUSE SQUARE FEET	FIELD ACRES	\$ VALUES
Nursery*	2004	310,000	66	\$3,642,200
	2003	309,000	61	\$3,237,500
Christmas Trees	2004	N/A	31	\$28,700
	2003	N/A	31	\$28,700
TOTALS	2004	310,000	97	\$3,670,900
	2003	309,000	92	\$3,266,200



*Includes turf and cut flowers

VEGETABLE CROPS

COMMODITY	YEAR	ACRES	\$ VALUES
Miscellaneous Vegetables*	2004	320	\$1,329,000
	2003	300	\$1,162,000



*Includes beans, sweet corn, garlic, herbs, melons, peas, potatoes, squash, tomatoes, etc.

FIELD CROPS

COMMODITY	YEAR	ACRES	YIELD/ ACRE	TOTAL YIELD	PER AUM	\$ VALUES
IRRIGATED PASTURE	2004	6,000	9.00 AUM*	54,000	\$19.00	\$1,026,000
	2003	6,000	9.00 AUM*	54,000	\$19.00	\$1,026,000
PASTURE, other (grassland, coast bench)	2004	365,000	.68 AUM*	248,200	\$11.10	\$2,755,000
	2003	365,000	.85 AUM*	310,250	\$11.10	\$3,443,800
RANGE	2004	355,000	.50 AUM*	177,500	\$7.80	\$1,384,500
	2003	355,000	.60 AUM*	213,000	\$7.80	\$1,661,400
MISCELLANEOUS**	2004					\$4,600,000
	2003					\$4,750,000
TOTALS	2004					\$9,765,500
	2003					\$10,881,200

*AUM means Annual Unit Month (food required to feed a 1,000 pound steer for one month).

**Miscellaneous includes alfalfa, barley, beans, corn, oats, and hay.



FOREST PRODUCTS

TIMBER	2004	2003
Log Production (board feet)	109,548,000	112,568,000
Total Stumpage Value, net	\$40,995,100	\$40,354,100
Total Value at Mill, gross	\$66,605,200	\$68,496,100

- 1) Calendar year 2004 experienced a very slight decrease in harvest yields for Mendocino County from the previously reported year. The harvest level continues to reflect the continued inability of the California Department of Forestry and Fire Protection to harvest timber from Jackson Demonstration State Forest.
- 2) The average price for stumpage based on the information provided by the Board of Equalization is approximately \$375/mbf for the timber harvested within Mendocino County. This again reflects a modest increase from the 2003 value of \$358/mbf.
- 3) The combined value of delivered value at the mill includes both stumpage (\$375/mbf) and logging and hauling cost (\$250/mbf) for a total value of \$625/mbf = \$66,605,184.
- 4) Mendocino County is ranked fifth in the state of timber producing counties behind Humboldt, Siskiyou, Shasta, and Plumas counties. This change in ranking reflects national forest timber becoming more available during the past year.
- 5) However, given the high economic value associated with redwood, Mendocino ranks third in the state in total timber value (Humboldt is ranked first, Siskiyou is 2nd).

Data based on information from Gregory A. Giusti, U.C. Cooperative Extension.

10 YEAR COMPARISON (LOG PRODUCTION)

YEAR	Log Production (Board Feet)	Value at Mill (Gross)
2004	109,548,000	\$66,605,200
2003	112,568,000	\$68,496,100
2002	97,722,000	\$53,942,500
2001	117,596,000	\$80,072,500
2000	156,101,000	\$145,798,400
1999	227,515,000	\$151,069,000
1998	225,878,000	\$126,943,400
1997	243,866,000	\$131,200,000
1996	275,589,000	\$160,117,000
1995	211,583,000	\$179,211,000

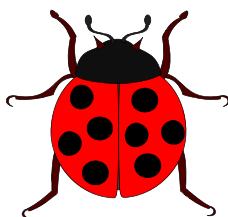


SUSTAINABLE AGRICULTURE IN 2004 ORGANIC FARMS

NUMBER OF FARMS	CROPS	ACRES
48	Wine grapes	2,600
27	Apples	155
15	Pears	282
35	Miscellaneous Vegetables	98
46	Miscellaneous Fruit & Nut	116
25	Nursery & Cut Flowers	19
196	TOTAL	3,270

BIOLOGICAL CONTROL

BIO-CONTROL AGENT	SCOPE OF PROGRAM
Bull Thistle Gall Fly	3 Sites
Gorse Weevil	Generally Distributed
Gorse Spider Mite	Generally Distributed
Italian Thistle Seed Head Weevil	Widely Distributed
Klamath Weed Beetles	Widely Distributed
Klamath Weed Root Borers	Widely Distributed
Puncture Vine Seed Weevil	Generally Distributed
Puncture Vine Stem Weevil	Generally Distributed
Tansy Ragwort Cinnabar Moth	Established
Tansy Ragwort Flea Beetle	Established
Yellow Starthistle Seed Head Weevil	Widely Distributed
Yellow Starthistle Gall Forming Fly	Widely Distributed
Yellow Starthistle Hairy Weevil	Generally Distributed
Ash Whitefly Stingless Wasp	Established
Peacock Fly #2 (<i>Chaetorellia succinea</i>)	Widely Distributed
Yellow Starthistle Rust (<i>Puccinea jaceae</i>)	3 Sites

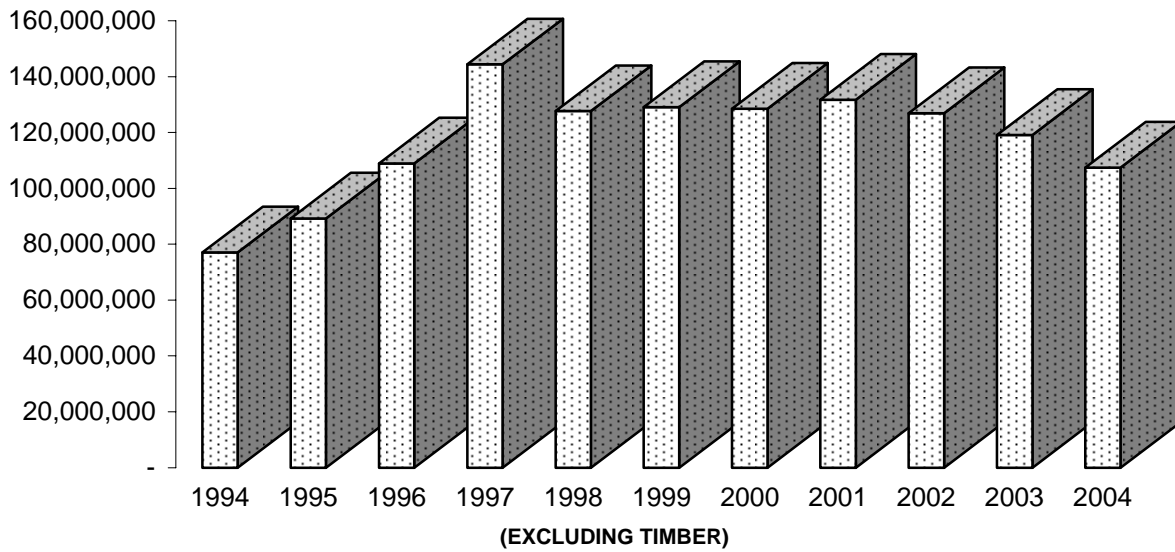


PEST EXCLUSION

Parcel Post & Truck Shipment Inspections

SHIPMENTS INSPECTED	EXOTIC PESTS INTERCEPTED	SHIPMENTS REJECTED
1,079	29	21

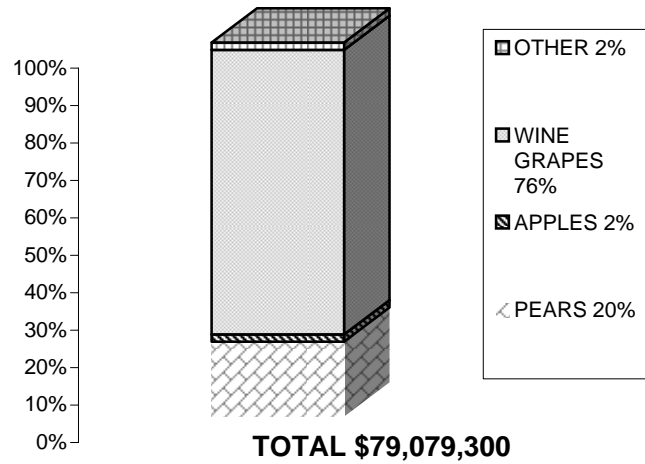
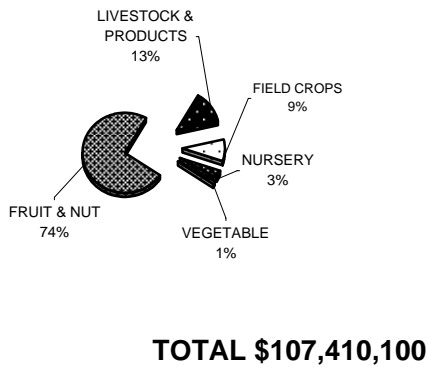
**VALUE OF MENDOCINO COUNTY AGRICULTURE
1994 - 2004**



2004 MILLION DOLLAR CROPS

TIMBER	\$	66,605,200
WINE GRAPES	\$	60,141,500
BARTLETT PEARS	\$	13,160,800
CATTLE & CALVES	\$	6,168,700
MILK	\$	3,857,900
NURSERY	\$	3,670,900
PASTURE	\$	2,755,000
BOSC PEARS	\$	1,739,900
RANGE	\$	1,384,500
VEGETABLE	\$	1,329,000
APPLES	\$	1,290,700
PASTURE, IRRIGATED	\$	1,026,000

SHARES OF AGRICULTURAL VALUE MENDOCINO COUNTY 2004



SUMMARY OF PRODUCTION

COMMODITY	2004	2003
FRUITS AND NUTS	\$ 79,079,300	\$ 87,186,150
LIVESTOCK PRODUCTION	\$ 7,385,900	\$ 9,200,600
LIVESTOCK AND POULTRY PRODUCTS	\$ 6,179,500	\$ 6,921,200
NURSERY PRODUCTION	\$ 3,670,900	\$ 3,266,200
VEGETABLE CROPS	\$ 1,329,000	* \$ 1,162,000
FIELD CROPS	\$ 9,765,500	\$ 10,881,200
FOREST PRODUCTS	\$ 66,605,200	\$ 68,496,100
TOTALS	\$ 174,015,300	* \$ 187,113,450

*2003 REVISED

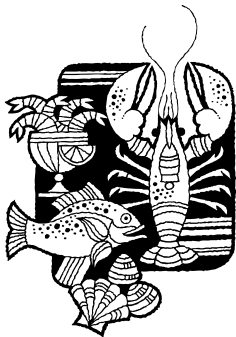
SUPPLEMENT TO CROP REPORT COMMERCIAL FISH CATCH

COMMODITY	YEAR	TOTAL LBS	TOTAL VALUE
SALMON, CHINOOK	2004	1,290,698	\$ 3,445,611
	2003	3,420,099	\$ 6,508,964
CRAB, DUNGENESS	2004	887,688	\$ 1,403,592
	2003	668,614	\$ 1,049,498
SABLEFISH	2004	948,236	\$ 1,216,133
	2003	854,284	\$ 1,114,140
SOLE, DOVER	2004	1,395,853	\$ 528,571
	2003	1,738,008	\$ 641,894
URCHIN, RED	2004	1,249,252	\$ 483,446
	2003	2,009,679	\$ 1,031,913
THORNYHEAD, LONGSPINE	2004	343,384	\$ 135,414
	2003	352,436	\$ 192,463
TUNA, ALBACORE*	2004	117,986	\$ 101,161
	2003	16,965	\$ 11,946
CABEZON	2004	23,484	\$ 98,216
	2003	12,588	\$ 47,137
THORNYHEAD, SHORTSPINE	2004	115,408	\$ 87,865
	2003	157,642	\$ 122,649
ROCKFISH, BANK*	2004	95,205	\$ 47,486
	2003	1,368	\$ 609
MICELLANEOUS	2004	590,656	\$ 392,852
	2003	384,311	\$ 272,523
TOTALS	2004	7,058,011	\$ 7,941,313
	2003	9,615,994	\$ 10,993,736

*Tuna, Albacore & Rockfish, Bank made top 10 in 2004

COMMERCIAL FISH CATCH TEN YEAR VALUE COMPARISON

YEAR	POUNDS	VALUE
2004	7,058,011	\$ 7,941,313
2003	9,615,994	\$ 10,993,736
2002	10,666,604	\$ 8,260,477
2001	8,390,895	\$ 7,488,535
2000	9,138,022	\$ 8,430,200
1999	9,206,159	\$ 7,427,600
1998	9,437,912	\$ 6,111,000
1997	16,058,585	\$ 11,520,900
1996	12,371,000	\$ 9,070,000
1995	12,967,500	\$ 11,301,500

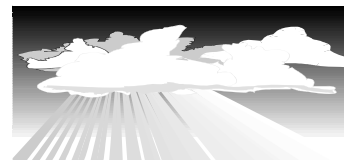


Source - State of California Department of Fish and Game
All figures are rounded - 2004 figures are preliminary

UKIAH 110 YEAR RAINFALL DATA (FROM UKIAH FIRE DEPARTMENT RECORDS)

<u>SEASON</u>	<u>TOTAL</u>	<u>SEASON</u>	<u>TOTAL</u>	<u>SEASON</u>	<u>TOTAL</u>
1894-95	52.55	1931-32	27.67	1968-69	51.28
1895-96	40.85	1932-33	24.71	1969-70	48.71
1896-97	43.34	1933-34	25.21	1970-71	38.31
1897-98	19.83	1934-35	33.05	1971-72	25.61
1898-99	27.60	1935-36	37.83	1972-73	42.09
1899-00	33.69	1936-37	29.24	1973-74	57.09
1900-01	37.09	1937-38	55.13	1974-75	38.60
1901-02	45.07	1938-39	22.86	1975-76	18.75
1902-03	34.55	1939-40	41.01	1976-77	14.20
1903-04	54.73	1940-41	56.92	1977-78	53.66
1904-05	42.93	1941-42	48.21	1978-79	30.23
1905-06	44.75	1942-43	40.41	1979-80	44.79
1906-07	48.64	1943-44	26.19	1980-81	26.82
1907-08	29.67	1944-45	31.74	1981-82	55.82
1908-09	57.39	1945-46	36.11	1982-83	70.19
1909-10	29.89	1946-47	25.90	1983-84	43.76
1910-11	32.99	1947-48	32.93	1984-85	27.40
1911-12	25.73	1948-49	27.53	1985-86	48.68
1912-13	33.40	1949-50	29.75	1986-87	25.25
1913-14	54.85	1950-51	42.28	1987-88	30.22
1914-15	49.28	1951-52	47.74	1988-89	31.48
1915-16	34.80	1952-53	45.06	1989-90	26.91
1916-17	30.23	1953-54	35.74	1990-91	26.00
1917-18	23.43	1954-55	25.63	1991-92	31.38
1918-19	37.23	1955-56	51.09	1992-93	50.49
1919-20	19.05	1956-57	32.36	1993-94	23.73
1920-21	47.94	1957-58	58.87	1994-95	58.88
1921-22	28.74	1958-59	26.42	1995-96	44.10
1922-23	30.35	1959-60	32.60	1996-97	39.07
1923-24	16.19	1960-61	34.89	1997-98	63.95
1924-25	47.44	1961-62	31.46	1998-99	34.77
1925-26	26.33	1962-63	44.45	1999-00	33.81
1926-27	47.32	1963-64	24.96	2000-01	26.68
1927-28	34.94	1964-65	50.84	2001-02	31.74
1928-29	24.44	1965-66	35.46	2002-03	49.70
1929-30	31.08	1966-67	43.16	2003-04	38.99
1930-31	20.06	1967-68	32.95		

FISCAL YEAR DATA



FIVE YEAR VALUE COMPARISON

ALL COMMODITIES

YEAR	LIVESTOCK AND						TOTAL
	FRUIT/ NUTS	LIVESTOCK PRODUCTION	POULTRY PRODUCTS	NURSERY PROD.	VEG PROD.	FIELD CROPS	
2004	\$79,079,300	\$7,385,900	\$6,179,500	\$3,670,900	\$1,329,000	\$9,765,500	\$107,410,100
2003	\$87,186,150	\$9,200,600	\$6,921,200	*\$3,266,200	*\$1,162,000	\$10,881,200	*\$118,617,350
2002	\$98,352,400	\$8,862,900	\$6,079,600	\$3,267,000	\$1,050,000	\$9,341,400	\$126,953,300
2001	\$104,300,400	\$8,757,700	\$6,478,600	\$2,790,000	\$1,111,500	\$8,316,600	\$131,754,800
2000	\$102,451,800	\$6,430,700	\$5,387,700	\$2,550,000	\$950,000	\$10,801,900	\$128,572,100

*2003 REVISED

TOP TEN GRAPE VARIETY VALUES 2004

VARIETY	TONS	VALUE PER TON	TOTAL VALUE
Chardonnay	14,251.2	\$1,064.22	\$15,166,412
Cabernet Sauvignon	7,466.3	\$1,393.49	\$10,404,214
Merlot	8,051.3	\$1,173.67	\$9,449,569
Zinfandel	6,376.1	\$1,086.87	\$6,929,992
Pinot Noir	4,129.0	\$1,526.87	\$6,304,446
Syrah	2,084.5	\$1,328.05	\$2,768,320
Petite Sirah	1,495.8	\$1,478.73	\$2,211,884
Sauvignon Blanc	2,438.0	\$878.12	\$2,140,857
Carignanne	1,616.7	\$683.15	\$1,104,449
Gewurtz	671.1	\$956.81	\$642,115



MENDOCINO COUNTY'S 2003-2004 EXPORT TRADE PARTNERS

Mendocino County commodities have been exported to these twenty-six countries.

Argentina



Germany



Russia



Australia



Guatemala



Scotland



Barbados



Israel



So. Africa



Brazil



Italy



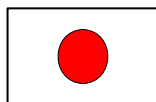
Spain



Chile



Japan



Switzerland



China



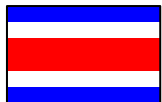
Mexico



Taiwan



Costa Rica



New Zealand



Thailand



England



Panama



Uruguay



France



Poland

