

**A.G. KAWAMURA, SECRETARY  
CALIFORNIA DEPARTMENT OF FOOD AND AGRICULTURE**

**and**

**THE HONORABLE BOARD OF SUPERVISORS OF MENDOCINO COUNTY**

The **total gross agricultural value** for commodities produced in 2003 was **\$187,612,850**, a 3.7% increase over 2002. The leading category was **winegrapes** with a value of **\$70,360,700**. Agricultural production, excluding timber, had a value of **\$119,116,750**, which is a decrease of 6% from 2002.

Timber, the second leading crop showed some improvement. The value of **\$68,496,100** was an increase of 27% over 2002. The log production of **112,568,000 board feet** was an increase in production of 15%.

**This crop report represents only the gross value to the growers. It does not reflect any net income, costs of production, or packinghouse charges.**

I would like to express my sincere gratitude to all the people, in particular Kim Gradin and Caralyn Gulseth, without whose help this report would not be possible. They include all the growers, packers, processors, my staff, the U.C. Cooperative Extension Service, and other government agencies.

Respectfully submitted,

David Bengston  
Agricultural Commissioner/Sealer

**MENDOCINO COUNTY  
DEPARTMENT OF AGRICULTURE**

**DAVID BENGSTON**  
Agricultural Commissioner  
Sealer of Weights and Measures

**ANNUAL CROP REPORT FOR YEAR 2003**

\*\*\*\*\*

**STAFF**

TONY LINEGAR ..... Assistant Agricultural Commissioner  
Assistant Sealer of Weights & Measures

RAY HARRIE ..... Ag/Measurement Standards Specialist III

NICK OLIVER ..... Ag/Measurement Standards Specialist III

ANDREA HARDY ..... Ag/Measurement Standards Specialist II

KIMBERLY GRADIN ..... Office Manager

CARALYN GULSETH ..... Staff Assistant II

**SEASONAL INSPECTORS**



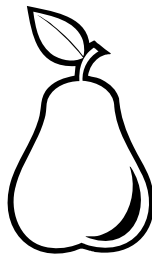
Richard Campbell, Merle Carlson, Glenn Gradin, Fred Turnbull, Fred Bellows, Vince Edgington

\*\*\*\*\*

**BOARD OF SUPERVISORS**

MICHAEL M. DELBAR ..... District 1  
RICHARD SHOEMAKER..... District 2  
HAL WAGENET, **CHAIR** ..... District 3  
PATRICIA A. CAMPBELL ..... District 4  
J. DAVID COLFAX ..... District 5

## FRUIT AND NUT CROPS

COMMODITY	YEAR	BEARING ACREAGE	PER ACRE	PRODUCTION IN TONS	\$ PER TON	VALUE
<b>APPLES, TOTAL</b>	<b>2003</b>	<b>200</b>	<b>9.5</b>	<b>1,896.0</b>	<b>380</b>	<b>\$720,500</b>
	2002	200	11.9	2,391.0	348	\$832,600
<i>Fresh</i>	2003			891.0	635	\$565,750
	2002			1,040.0	620	\$644,800
<i>Other (Dried, Juice, etc.)</i>	2003			1,005.0	154	\$154,750
	2002			1,351.0	139	\$187,800
<b>WINE GRAPES, TOTAL</b>	<b>2003</b>	<b>15,576</b>	<b>3.7</b>	<b>57,960.1</b>	<b>1,214</b>	<b>\$70,360,700</b>
	2002	15,202	3.9	59,128.3	1,375	\$81,301,400
<i>White Varieties</i>	2003	5,870	4.7	27,362.8		
	2002	5,955	4.4	26,444.2		
<i>Red Varieties</i>	2003	9,706	3.2	30,957.3		
	2002	9,245	3.5	32,684.1		
<b>PEARS, TOTAL</b>	<b>2003</b>	<b>2,316</b>	<b>17.0</b>	<b>39,540.0</b>	<b>369</b>	<b>\$14,554,950</b>
	2002	2,350	16.5	38,826.0	379	\$14,718,400
<b>Bartlett (1)</b>	2003	1,994	17.8	35,430.0	350	\$12,385,950
	2002	2,105	16.4	34,493.0	348	\$12,003,200
<i>Canning</i>	2003			18,533.0	200	\$3,706,600
	2002			18,690.0	195	\$3,644,600
<i>Fresh (1)</i>	2003			11,050.0	759	\$8,387,000
	2002			12,396.0	660	\$8,181,400
<i>Other (Baby Food Dried, Paste)</i>	2003			5,847.0	50	\$292,350
	2002			3,407.0	52	\$177,200
<b>Bosc (1)</b>	2003	126	18	2,268.0	625	\$1,417,500
	2002	132	18.1	2,389.0	750	\$1,791,800
<b>Red (1)</b>	2003	98	18.8	1,842.0	408	\$751,500
	2002	113	17.2	1,944.0	475	\$923,400
<b>MISC. TOTAL (2)</b>	<b>2003</b>	<b>260</b>				<b>\$1,550,000</b>
	2002	250				\$1,500,000
<b>TOTALS</b>	<b>2003</b>	<b>18,352</b>				<b>\$87,186,150</b>
	2002	18,002				\$98,352,400

(1) The fresh values listed for pears are FOB values. The actual average prices (farm gate values) to the growers for 2003 were: Bartlett \$181, Bosc \$260, and Reds \$222.  
for 2002 were: Bartlett \$181, Bosc \$337, and Reds \$191.

(2) Miscellaneous includes berries, cherries, chestnuts, olives, other pears, peaches, persimmons, pistachios and walnuts.

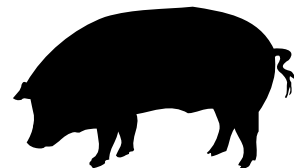
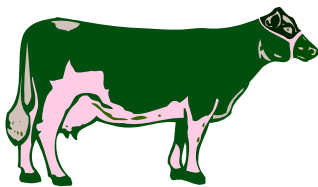
## FRUIT, NUT, AND GRAPEVINE ACREAGE

CROP	ACRES BEARING	ACRES NON-BEARING	TOTAL
<b>APPLES</b>	375	0	375
<b>WINE GRAPES, TOTAL</b>	15,584	594	16,178
Red	9,706	500	10,206
White	5,870	94	5,964
Rootstock	8	0	8
<b>PEARS, TOTAL</b>	2,294	13	2,307
Bartlett	1,994	0	1,994
Red	98	0	98
Bosc	126	13	139
Other	76	0	76
<b>WALNUTS, ENGLISH</b>	48	0	48
<b>MISCELLANEOUS*</b>	260	25	285
<b>TOTALS</b>	<b>18,561</b>	<b>632</b>	<b>19,193</b>

\*Miscellaneous includes: Berries, cherries, chestnuts, guava, peaches, persimmons, pistachios, plums, olives, and table grapes.

## LIVESTOCK INVENTORIES

COMMODITY	2002	2003
<b>All Cattle and Calves</b>	24,000	20,000
<b>Beef Cows and Heifers, 2 years and older</b>	12,000	10,000
<b>Milk Cows</b>	1,500	1,500
<b>Sheep and Lambs, all</b>	11,500	11,500
<b>Swine</b>	1,800	1,800



## LIVESTOCK PRODUCTION

COMMODITY	YEAR	NO. OF HEAD	TOTAL CWT** LIVE WT.	\$ PER	\$ VALUES
CATTLE AND CALVES	2003	16,776	134,208	\$60.54	\$8,125,400
	2002	16,153	135,224	\$58.20	\$7,869,600
SHEEP AND LAMBS	2003	2,241	2,017	\$96.00	\$193,600
	2002	2,241	2,017	\$65.00	\$131,100
SWINE	2003	2,270	2,987	\$35.70	\$106,600
	2002	2,270	2,987	\$34.20	\$102,200
MISCELLANEOUS*	2003				\$775,000
	2002				\$760,000
<b>TOTALS</b>	<b>2003</b>				<b>\$9,200,600</b>
	2002				\$8,862,900

\*Miscellaneous includes goats, pigeons, poultry, rabbits, turkeys, and aquaculture (fish farms).

\*\*CWT= 100 lbs.

NOTE: 2003 - Sheep producers reported \$37,805 in predatory losses.

## LIVESTOCK AND POULTRY PRODUCTS

COMMODITY	YEAR	PRODUCTION IN LBS.	PER UNIT	\$ VALUE
MILK	2003	370,099 CWT.	\$12.52	\$4,633,000
	2002	310,095 CWT.	\$12.27	\$3,805,000
WOOL	2003	32,360 LB.	\$1.18	\$38,200
	2002	32,360 LB.	\$0.76	\$24,600
MISCELLANEOUS*	2003			\$2,250,000
	2002			\$2,250,000
<b>TOTALS</b>	<b>2003</b>			<b>\$6,921,200</b>
	2002			\$6,079,600

\*Miscellaneous includes apiary, eggs, emus, cheese, manure, and ostriches.





## NURSERY PRODUCTION

COMMODITY	YEAR	GREENHOUSE SQUARE FEET	FIELD ACRES	\$ VALUES
Nursery*	2003	309,000	61	\$3,237,500
	2002	300,000	65	\$3,245,000
Christmas Trees	2003	N/A	31	\$28,700
	2002	N/A	31	\$22,000
<b>TOTALS</b>	<b>2003</b>	<b>309,000</b>	<b>92</b>	<b>\$3,266,200</b>
	2002	300,000	96	\$3,267,000



\*Includes turf and cut flowers

## VEGETABLE CROPS

COMMODITY	YEAR	ACRES	\$ VALUES
Miscellaneous Vegetables*	<b>2003</b>	<b>300</b>	<b>\$1,162,000</b>
	2002	360	\$1,050,000



\*Includes beans, sweet corn, garlic, herbs, melons, peas, potatoes, squash, tomatoes, etc.

## FIELD CROPS

COMMODITY	YEAR	ACRES	YIELD/ ACRE	TOTAL YIELD	PER AUM	\$ VALUES
IRRIGATED PASTURE	2003	6,000	9.00 AUM*	54,000	\$19.00	\$1,026,000
	2002	6,000	9.00 AUM*	54,000	\$19.00	\$1,026,000
PASTURE, other (grassland, coast bench)	2003	365,000	.85 AUM*	310,250	\$11.10	\$3,443,800
	2002	365,000	.60 AUM*	219,000	\$11.10	\$2,430,900
RANGE	2003	355,000	.60 AUM*	213,000	\$7.80	\$1,661,400
	2002	355,000	.50 AUM*	177,500	\$7.80	\$1,384,500
MISCELLANEOUS**	2003					\$4,750,000
	2002					\$4,500,000
<b>TOTALS</b>	<b>2003</b>					<b>\$10,881,200</b>
	2002					\$9,341,400

\*AUM means Annual Unit Month (food required to feed a 1,000 pound steer for one month).

\*\*Miscellaneous includes alfalfa, barley, beans, corn, oats, and hay.



## FOREST PRODUCTS

TIMBER	2003	2002
Log Production (board feet)	112,568,000	97,722,000
Total Stumpage Value, net	\$40,354,100	\$29,479,500
Total Value at Mill, gross	\$68,496,100	\$53,942,500

- 1) Calendar year 2003 experienced an increase of approximately 15% in harvest yields for Mendocino County from the previously reported year. This was despite of the continued inability of the California Department of Forestry and Fire Protection to harvest timber from Jackson Demonstration State Forest.
- 2) The average price for stumpage based on the information provided by the Board of Equalization is approximately \$358/mbf for the timber harvested within Mendocino County. This again reflects a modest increase from the 2002 value of \$302/mbf (+18%).
- 3) Mendocino County continues to rank fourth in the state of timber producing counties behind Humboldt, Shasta, and Siskiyou.
- 4) However, given the high economic value associated with redwood, Mendocino ranks third in the state in total timber value (Humboldt is ranked first, Siskiyou is 2nd).

Data based on information from Gregory A. Giusti, U.C. Cooperative Extension.

\*\*\*\*\*

## 10 YEAR COMPARISON (LOG PRODUCTION)

YEAR	Log Production (Board Feet)	Value at Mill (Gross)
<b>2003</b>	<b>112,568,000</b>	<b>\$68,496,100</b>
2002	97,722,000	\$53,942,500
2001	117,596,000	\$80,072,500
2000	156,101,000	\$145,798,400
1999	227,515,000	\$151,069,000
1998	225,878,000	\$126,943,400
1997	243,866,000	\$131,200,000
1996	275,589,000	\$160,117,000
1995	211,583,000	\$179,211,000
1994	227,422,000	\$158,706,000



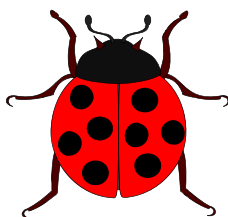


## SUSTAINABLE AGRICULTURE IN 2003 ORGANIC FARMS

NUMBER OF FARMS	CROPS	ACRES
42	Wine grapes	2,500
28	Apples	163
15	Pears	282
37	Miscellaneous Vegetables	103
49	Miscellaneous Fruit & Nut	129
23	Nursery & Cut Flowers	20
<b>194</b>	<b>TOTAL</b>	<b>3,197</b>

## BIOLOGICAL CONTROL

BIO-CONTROL AGENT	SCOPE OF PROGRAM
Bull Thistle Gall Fly	3 sites
Gorse Weevil	Generally Distributed
Gorse Spider Mite	Generally Distributed
Italian Thistle Seed Head Weevil	Widely Distributed
Klamath Weed Beetles	Widely Distributed
Klamath Weed Root Borers	Widely Distributed
Puncture Vine Seed Weevil	Generally Distributed
Puncture Vine Stem Weevil	Generally Distributed
Tansy Ragwort Cinnabar Moth	Established
Tansy Ragwort Flea Beetle	Established
Yellow Starthistle Seed Head Weevil	Widely Distributed
Yellow Starthistle Gall Forming Fly	Widely Distributed
Yellow Starthistle Hairy Weevil	Generally Distributed
Ash Whitefly Stingless Wasp	Established
Peacock Fly #2 ( <i>Chaetorellia Succinea</i> )	Widely Distributed

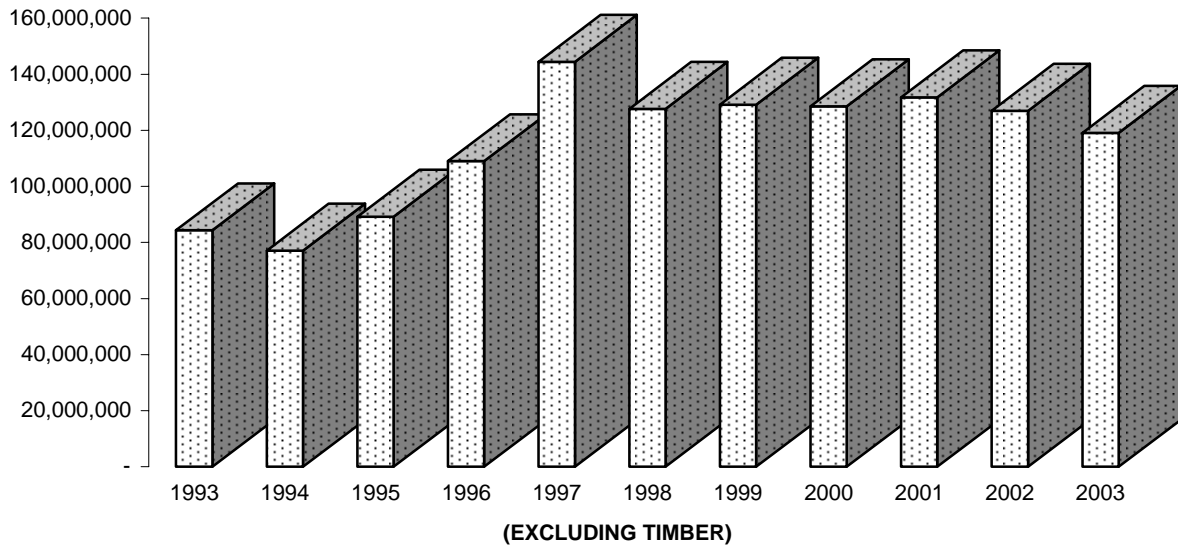


## PEST EXCLUSION

### Parcel Post & Truck Shipment Inspections

SHIPMENTS INSPECTED	EXOTIC PESTS INTERCEPTED	SHIPMENTS REJECTED
1,736	55	23

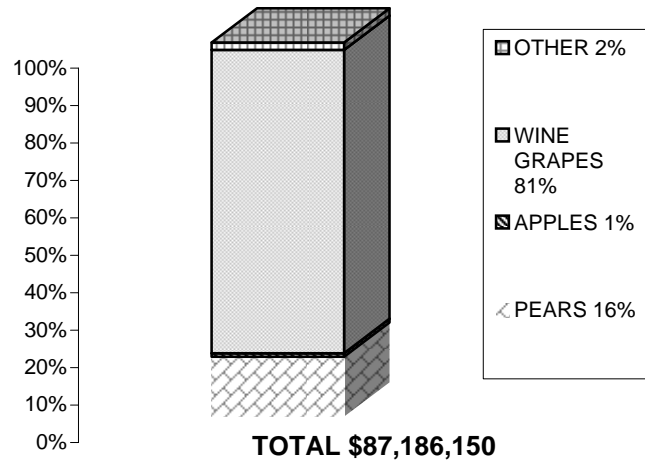
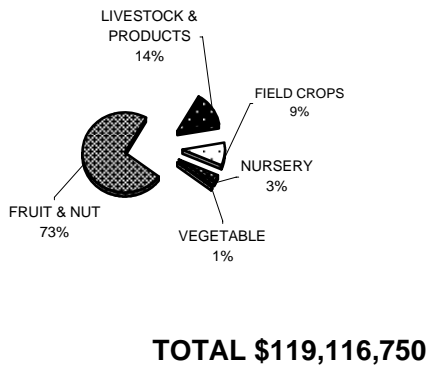
**VALUE OF MENDOCINO COUNTY AGRICULTURE  
1993 - 2003**



**2003 MILLION DOLLAR CROPS**

<b>WINE GRAPES</b>	\$	70,360,700
<b>TIMBER</b>	\$	68,496,100
<b>BARTLETT PEARS</b>	\$	12,385,950
<b>CATTLE &amp; CALVES</b>	\$	8,125,400
<b>MILK</b>	\$	4,633,000
<b>NURSERY</b>	\$	3,266,200
<b>PASTURE</b>	\$	3,443,800
<b>RANGE</b>	\$	1,661,400
<b>BOSC PEARS</b>	\$	1,417,500
<b>VEGETABLE</b>	\$	1,162,000
<b>PASTURE, IRRIGATED</b>	\$	1,026,000

# SHARES OF AGRICULTURAL VALUE MENDOCINO COUNTY 2002



## SUMMARY OF PRODUCTION

COMMODITY	2003	2002
FRUITS AND NUTS	\$ 87,186,150	\$ 98,352,400
LIVESTOCK PRODUCTION	\$ 9,200,600	\$ 8,862,900
LIVESTOCK AND POULTRY PRODUCTS	\$ 6,921,200	\$ 6,079,600
NURSERY PRODUCTION	\$ 3,266,200	\$ 3,267,000
VEGETABLE CROPS	\$ 1,661,400	\$ 1,050,000
FIELD CROPS	\$ 10,881,200	\$ 9,341,400
FOREST PRODUCTS	\$ 68,496,100	\$ 53,942,500
<b>TOTALS</b>	<b>\$ 187,612,850</b>	<b>\$ 180,895,800</b>

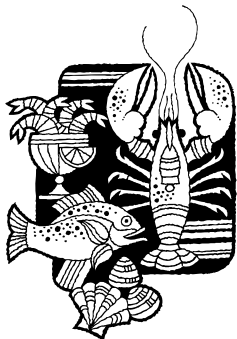
## SUPPLEMENT TO CROP REPORT COMMERCIAL FISH CATCH

COMMODITY	YEAR	TOTAL LBS	TOTAL VALUE
SALMON, CHINOOK	2003	3,420,099	\$ 6,508,964
	2002	1,111,959	\$ 1,723,430
SABLEFISH	2003	854,284	\$ 1,114,140
	2002	680,443	\$ 804,056
CRAB, DUNGENESS	2003	668,614	\$ 1,049,498
	2002	191,293	\$ 353,739
URCHIN, RED	2003	2,009,679	\$ 1,031,913
	2002	4,417,893	\$ 2,849,377
SOLE, DOVER	2003	1,738,008	\$ 641,894
	2002	2,093,367	\$ 790,788
THORNYHEAD, LONGSPINE	2003	352,436	\$ 192,463
	2002	854,422	\$ 593,655
THORNYHEAD, SHORTSPINE	2003	157,642	\$ 122,649
	2002	228,657	\$ 289,372
SOLE, PETRALE	2003	63,380	\$ 55,015
	2002	154,547	\$ 143,508
CABEZON	2003	12,588	\$ 47,137
	2002	20,681	\$ 70,779
SOLE, REX*	2003	94,779	\$ 42,759
	2002	142,936	\$ 63,268
MICELLANEOUS	2003	244,485	\$ 187,304
	2002	770,406	\$ 578,505
TOTALS	2003	9,615,994	\$ 10,993,736
	2002	10,666,604	\$ 8,260,477

\*Sole, Rex made top 10 in 2003

## COMMERCIAL FISH CATCH TEN YEAR VALUE COMPARISON

YEAR	POUNDS	VALUE
2003	9,615,994	\$ 10,993,736
2002	10,666,604	\$ 8,260,477
2001	8,390,895	\$ 7,488,535
2000	9,138,022	\$ 8,430,200
1999	9,206,159	\$ 7,427,600
1998	9,437,912	\$ 6,111,000
1997	16,058,585	\$ 11,520,900
1996	12,371,000	\$ 9,070,000
1995	12,967,500	\$ 11,301,500
1994	12,975,000	\$ 9,158,500



Source - State of California Department of Fish and Game  
 All figures are rounded - 2003 figures are preliminary

## UKIAH 110 YEAR RAINFALL DATA (FROM UKIAH FIRE DEPARTMENT RECORDS)

<u>SEASON</u>	<u>TOTAL</u>	<u>SEASON</u>	<u>TOTAL</u>	<u>SEASON</u>	<u>TOTAL</u>
1893-94	47.93	1930-31	20.06	1967-68	32.95
1894-95	52.55	1931-32	27.67	1968-69	51.28
1895-96	40.85	1932-33	24.71	1969-70	48.71
1896-97	43.34	1933-34	25.21	1970-71	38.31
1897-98	19.83	1934-35	33.05	1971-72	25.61
1898-99	27.60	1935-36	37.83	1972-73	42.09
1899-00	33.69	1936-37	29.24	1973-74	57.09
1900-01	37.09	1937-38	55.13	1974-75	38.60
1901-02	45.07	1938-39	22.86	1975-76	18.75
1902-03	34.55	1939-40	41.01	1976-77	14.20
1903-04	54.73	1940-41	56.92	1977-78	53.66
1904-05	42.93	1941-42	48.21	1978-79	30.23
1905-06	44.75	1942-43	40.41	1979-80	44.79
1906-07	48.64	1943-44	26.19	1980-81	26.82
1907-08	29.67	1944-45	31.74	1981-82	55.82
1908-09	57.39	1945-46	36.11	1982-83	70.19
1909-10	29.89	1946-47	25.90	1983-84	43.76
1910-11	32.99	1947-48	32.93	1984-85	27.40
1911-12	25.73	1948-49	27.53	1985-86	48.68
1912-13	33.40	1949-50	29.75	1986-87	25.25
1913-14	54.85	1950-51	42.28	1987-88	30.22
1914-15	49.28	1951-52	47.74	1988-89	31.48
1915-16	34.80	1952-53	45.06	1989-90	26.91
1916-17	30.23	1953-54	35.74	1990-91	26.00
1917-18	23.43	1954-55	25.63	1991-92	31.38
1918-19	37.23	1955-56	51.09	1992-93	50.49
1919-20	19.05	1956-57	32.36	1993-94	23.73
1920-21	47.94	1957-58	58.87	1994-95	58.88
1921-22	28.74	1958-59	26.42	1995-96	44.10
1922-23	30.35	1959-60	32.60	1996-97	39.07
1923-24	16.19	1960-61	34.89	1997-98	63.95
1924-25	47.44	1961-62	31.46	1998-99	34.77
1925-26	26.33	1962-63	44.45	1999-00	33.81
1926-27	47.32	1963-64	24.96	2000-01	26.68
1927-28	34.94	1964-65	50.84	2001-02	31.74
1928-29	24.44	1965-66	35.46	2002-03	49.70
1929-30	31.08	1966-67	43.16		



## FIVE YEAR VALUE COMPARISON

\*\*ALL COMMODITIES\*\*

YEAR	FRUIT/ NUTS	LIVESTOCK AND POULTRY				FIELD CROPS	TOTAL
		LIVESTOCK PRODUCTION	POULTRY PRODUCTS	NURSERY PROD.	VEG PROD.		
2003	\$87,186,150	\$9,200,600	\$6,921,200	\$3,226,200	\$1,661,400	\$10,881,200	\$119,076,750
2002	\$98,352,400	\$8,862,900	\$6,079,600	\$3,267,000	\$1,050,000	\$9,341,400	\$126,953,300
2001	\$104,300,400	\$8,757,700	\$6,478,600	\$2,790,000	\$1,111,500	\$8,316,600	\$131,754,800
2000	\$102,451,800	\$6,430,700	\$5,387,700	\$2,550,000	\$950,000	\$10,801,900	\$128,572,100
1999	\$102,906,200	\$6,013,300	\$5,591,800	\$2,620,000	\$1,200,000	\$10,801,900	\$129,133,200

## TOP TEN GRAPE VARIETY VALUES 2003

VARIETY	TONS	VALUE PER TON	TOTAL VALUE
Chardonnay	21,081.3	\$1,065.90	\$22,470,557
Cabernet Sauvignon	7,324.3	\$1,764.95	\$12,927,023
Merlot	7,904.0	\$1,265.11	\$9,999,429
Zinfandel	5,535.9	\$1,243.15	\$6,881,954
Pinot Noir	4,549.9	\$1,361.34	\$6,193,961
Sauvignon Blanc	3,223.1	\$933.56	\$3,008,957
Syrah	1,698.4	\$1,382.57	\$2,348,157
Petite Sirah	1,048.1	\$1,630.82	\$1,709,262
Carignanne	1,340.6	\$672.32	\$901,312
Gewurtz	863.0	\$908.66	\$784,174



# MENDOCINO COUNTY'S 2003 EXPORT TRADE PARTNERS

Mendocino County commodities have been exported to these seventeen countries.

Argentina



England



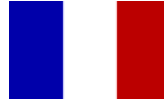
Poland



Australia



France



So. Africa



Barbados



Israel



Spain



Chile



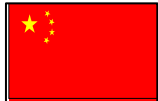
Italy



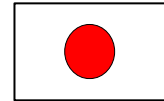
Thailand



China



Japan



Uruguay



Costa Rica



Mexico

