

**WILLIAM J. LYONS, SECRETARY
CALIFORNIA DEPARTMENT OF FOOD AND AGRICULTURE**

and

THE HONORABLE BOARD OF SUPERVISORS OF MENDOCINO COUNTY

The **total gross agricultural value** for commodities produced in 2002 was **\$180,895,800**, a 15% reduction from 2001. The leading category was **winegrapes** with a value of **\$81,301,400**. Agricultural production, excluding timber, had a value of **\$126,953,300**, which is a slight decrease from year 2001.

Timber, the second leading crop continues to regress. The value of **\$53,942,500** is the lowest value recorded since 1972. The log production of **97,722,000 board feet** broke last years record for the lowest production.

This crop report represents only the gross value to the growers. It does not reflect any net income, costs of production, or packinghouse charges.

I would like to express my sincere gratitude to all the people, in particular Kim Gradin and Caralyn Gulseth, without whose help this report would not be possible. They include all the growers, packers, processors, my staff, the U.C. Cooperative Extension Service, and other government agencies.

Respectfully submitted,

David Bengston
Agricultural Commissioner/Sealer

**MENDOCINO COUNTY
DEPARTMENT OF AGRICULTURE**

DAVID BENGSTON
Agricultural Commissioner
Sealer of Weights and Measures

ANNUAL CROP REPORT FOR YEAR 2002

STAFF

TONY LINEGAR Assistant Agricultural Commissioner
Assistant Sealer of Weights & Measures

RAY HARRIE Ag/Measurement Standards Specialist III

NICK OLIVER Ag/Measurement Standards Specialist III

ANDREA HARDY Ag/Measurement Standards Specialist I

KIMBERLY GRADIN Office Manager

CARALYN GULSETH Staff Assistant II



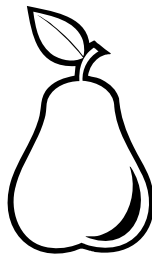
SEASONAL INSPECTORS

Dick Sarber, Richard Campbell, Ralph Kennedy, Merle Carlson, Glenn Gradin, Ann Vowels

BOARD OF SUPERVISORS

MICHAEL M. DELBAR District 1
RICHARD SHOEMAKER, **CHAIR** District 2
HAL WAGENET. District 3
PATRICIA A. CAMPBELL District 4
J. DAVID COLFAX District 5

FRUIT AND NUT CROPS

COMMODITY	YEAR	BEARING ACREAGE	PER ACRE	PRODUCTION IN TONS	\$ PER TON	VALUE
APPLES, TOTAL	2002	200	11.9	2,391.0	348	\$832,600
	2001	200	13.2	2,638.0	330	\$870,000
<i>Fresh</i>	2002			1,040.0	620	\$644,800
	2001			1,161.0	570	\$662,000
<i>Other (Dried, Juice, etc.)</i>	2002			1,351.0	139	\$187,800
	2001			1,477.0	141	\$208,000
WINE GRAPES, TOTAL	2002	15,202	3.9	59,128.3	1,375	\$81,301,400
	*2001	14,800	4.0	59,854.3	1,466	\$87,746,400
<i>White Varieties</i>	2002	5,955	4.4	26,444.2		
	*2001	6,173	4.6	28,459.4		
<i>Red Varieties</i>	2002	9,245	3.5	32,684.1		
	*2001	8,627	3.6	31,394.9		
PEARS, TOTAL	2002	2,350	16.5	38,826.0	379	\$14,718,400
	2001	2,350	19.6	46,054.0	317	\$14,527,000
Bartlett (1)	2002	2,105	16.4	34,493.0	348	\$12,003,200
	2001	2,105	19.8	41,644.0	303	\$12,548,800
<i>Canning</i>	2002			18,690.0	195	\$3,644,600
	2001			19,821.0	182	\$3,607,400
<i>Fresh (1)</i>	2002			12,396.0	660	\$8,181,400
	2001			14,639.0	600	\$8,783,400
<i>Other (Baby Food Dried, Paste)</i>	2002			3,407.0	52	\$177,200
	2001			7,184.0	22	\$158,000
Bosc (1)	2002	132	18.1	2,389.0	750	\$1,791,800
	2001	132	15	1,980.0	680	\$1,346,400
Red (1)	2002	113	17.2	1,944.0	475	\$923,400
	2001	113	21.5	2,430.0	260	\$631,800
MISC. TOTAL (2)	2002	250				\$1,500,000
	2001	250				\$1,157,000
TOTALS	2002	18,002				\$98,352,400
	*2001	17,600				\$104,300,400

(1) The fresh values listed for pears are FOB values. The actual average prices (farm gate values) to the growers for 2001 were: Bartlett \$168, Bosc \$304, and Reds \$186.
for 2002 were: Bartlett \$181, Bosc \$337, and Reds \$191.

(2) Miscellaneous includes berries, cherries, chestnuts, olives, other pears, peaches, persimmons, pistachios and walnuts.

*2001 Revised

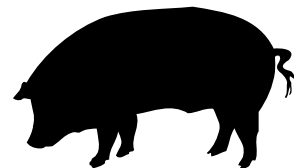
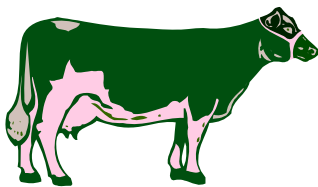
FRUIT, NUT, AND GRAPEVINE ACREAGE

CROP	ACRES BEARING	ACRES NON-BEARING	TOTAL
APPLES	421	0	421
WINE GRAPES, TOTAL	15,202	953	16,155
Red	9,245	748	9,993
White	5,955	196	6,151
Rootstock	2	9	11
PEARS, TOTAL	2,407	6	2,413
Bartlett	2,094	0	2,094
Red	112	0	112
Bosc	125	5	130
Other	76	1	77
WALNUTS, ENGLISH	49	0	49
MISCELLANEOUS*	250	10	260
TOTALS	18,329	969	19,298

*Miscellaneous includes: Berries, cherries, chestnuts, guava, peaches, persimmons, pistachios, plums, olives, and table grapes.

LIVESTOCK INVENTORIES

COMMODITY	2001	2002
All Cattle and Calves	27,000	24,000
Beef Cows and Heifers, 2 years and older	12,000	12,000
Milk Cows	1,500	1,500
Sheep and Lambs, all	11,500	11,500
Swine	1,800	1,800



LIVESTOCK PRODUCTION

COMMODITY	YEAR	NO. OF HEAD	TOTAL CWT** LIVE WT.	\$ PER	\$ VALUES
CATTLE AND CALVES	2002	16,153	135,224	\$58.20	\$7,869,600
	2001	15,218	127,774	\$60.67	\$7,749,800
SHEEP AND LAMBS	2002	2,241	2,017	\$65.00	\$131,100
	2001	2,100	1,916	\$77.00	\$147,600
SWINE	2002	2,270	2,987	\$34.20	\$102,200
	2001	2,374	3,118	\$45.00	\$140,300
MISCELLANEOUS*	2002				\$760,000
	2001				\$720,000
TOTALS	2002				\$8,862,900
	2001				\$8,757,700

*Miscellaneous includes goats, pigeons, poultry, rabbits, turkeys, and aquaculture (fish farms).

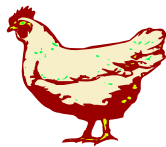
**CWT= 100 lbs.

NOTE: 2002 - Sheep producers reported \$30,354 in predatory losses.

LIVESTOCK AND POULTRY PRODUCTS

COMMODITY	YEAR	PRODUCTION IN LBS.	PER UNIT	\$ VALUE
MILK	2002	310,095 CWT.	\$12.27	\$3,805,000
	2001	301,278 CWT.	\$15.61	\$4,703,000
WOOL	2002	32,360 LB.	\$0.76	\$24,600
	2001	53,408 LB.	\$0.49	\$25,600
MISCELLANEOUS*	2002			\$2,250,000
	2001			\$1,750,000
TOTALS	2002			\$6,079,600
	2001			\$6,478,600

*Miscellaneous includes apiary, eggs, emus, cheese, manure, and ostriches.



NURSERY PRODUCTION

COMMODITY	YEAR	GREENHOUSE SQUARE FEET	FIELD ACRES	\$ VALUES
Nursery*	2002	300,000	65	\$3,245,000
	2001	308,000	80	\$2,750,000
Christmas Trees	2002	N/A	31	\$22,000
	2001	N/A	30	\$40,000
TOTALS	2002	300,000	96	\$3,267,000
	2001	308,000	110	\$2,790,000



*Includes turf and cut flowers

VEGETABLE CROPS

COMMODITY	YEAR	ACRES	\$ VALUES
Miscellaneous Vegetables*	2002	360	\$1,050,000
	2001	360	\$1,111,500



*Includes beans, sweet corn, garlic, herbs, melons, peas, potatoes, squash, tomatoes, etc.

FIELD CROPS

COMMODITY	YEAR	ACRES	YIELD/ ACRE	TOTAL YIELD	PER AUM	\$ VALUES
IRRIGATED PASTURE	2002	6,000	9.00 AUM*	54,000	\$19.00	\$1,026,000
	2001	6,000	9.00 AUM*	54,000	\$18.50	\$999,000
PASTURE, other (grassland, coast bench)	2002	365,000	.60 AUM*	219,000	\$11.10	\$2,430,900
	2001	365,000	.45 AUM*	164,250	\$11.00	\$1,806,800
RANGE	2002	355,000	.50 AUM*	177,500	\$7.80	\$1,384,500
	2001	355,000	.45 AUM*	150,750	\$7.70	\$1,160,800
MISCELLANEOUS**	2002					\$4,500,000
	2001					\$4,350,000
TOTALS	2002					\$9,341,400
	2001					\$8,316,600

*AUM means Annual Unit Month (food required to feed a 1,000 pound steer for one month).

**Miscellaneous includes alfalfa, barley, beans, corn, oats, and hay.



FOREST PRODUCTS

TIMBER	2002	2001
Log Production (board feet)	97,722,000	117,596,000
Total Stumpage Value, net	\$29,479,500	\$52,437,500
Total Value at Mill, gross	\$53,942,500	\$80,072,500

- 1) Data supplied from State Board of Equalization, Timber Tax Division.
- 2) Stumpage value is the raw product value of a tree prior to actual harvest. Data from State Board of Equalization.
- 3) Includes logging and hauling costs. Data based on information from Gregory A. Giusti, U.C. Cooperative Extension.

10 YEAR COMPARISON (LOG PRODUCTION)

YEAR	Log Production (Board Feet)	Value at Mill (Gross)
2002	97,722,000	\$53,942,500
2001	117,596,000	\$80,072,500
2000	156,101,000	\$145,798,400
1999	227,515,000	\$151,069,000
1998	225,878,000	\$126,943,400
1997	243,866,000	\$131,200,000
1996	275,589,000	\$160,117,000
1995	211,583,000	\$179,211,000
1994	227,422,000	\$158,706,000
1993	254,900,000	\$174,063,000



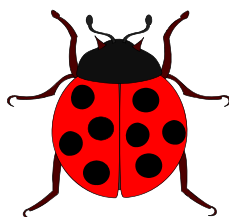
SUSTAINABLE AGRICULTURE IN 2002 ORGANIC FARMS

NUMBER OF FARMS	CROPS	ACRES
50	Wine grapes	2,500
27	Apples	241
16	Pears	282
40	Miscellaneous Vegetables	125
41	Miscellaneous Fruit & Nut	131
12	Nursery	12
186*	TOTAL	3,291

*Total does not add up due to overlapping crops

BIOLOGICAL CONTROL

BIO-CONTROL AGENT	SCOPE OF PROGRAM
Bull Thistle Gall Fly	3 sites
Gorse Weevil	Generally Distributed
Gorse Spider Mite	Generally Distributed
Italian Thistle Seed Head Weevil	Widely Distributed
Klamath Weed Beetles	Widely Distributed
Klamath Weed Root Borers	Widely Distributed
Puncture Vine Seed Weevil	Generally Distributed
Puncture Vine Stem Weevil	Generally Distributed
Tansy Ragwort Cinnabar Moth	Established
Tansy Ragwort Flea Beetle	Established
Yellow Starthistle Seed Head Weevil	Widely Distributed
Yellow Starthistle Gall Forming Fly	Widely Distributed
Yellow Starthistle Hairy Weevil	Generally Distributed
Ash Whitefly Stingless Wasp	Established
Peacock Fly #2 (<i>Chaetorellia Succinea</i>)	Widely Distributed

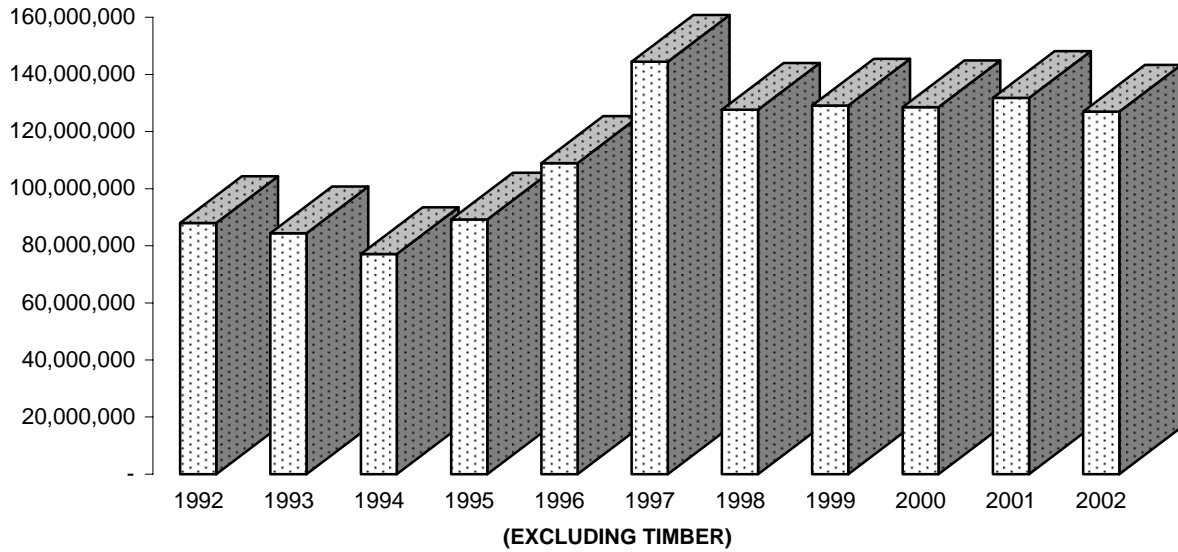


PEST EXCLUSION

2,036 SHIPMENTS INSPECTED

PROBLEM	TYPE OF SHIPMENT	NUMBER REJECTED
Infested with Exotic Pest	Parcel Post/Truck	5

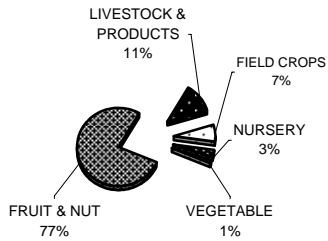
**VALUE OF MENDOCINO COUNTY AGRICULTURE
1992 - 2002**



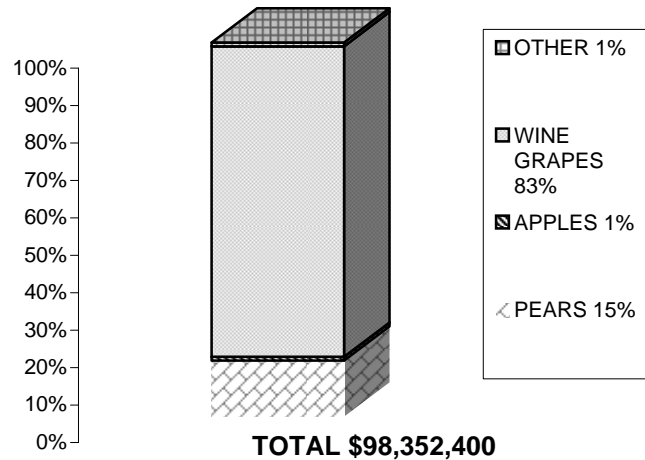
2002 MILLION DOLLAR CROPS

WINE GRAPES	\$	81,301,400
TIMBER	\$	53,942,500
BARTLETT PEARS	\$	12,003,200
CATTLE & CALVES	\$	7,869,600
MILK	\$	3,805,000
NURSERY	\$	3,267,000
PASTURE	\$	2,430,900
BOSC PEARS	\$	1,791,800
RANGE	\$	1,384,500
VEGETABLE	\$	1,050,000
PASTURE, IRRIGATED	\$	1,026,000

SHARES OF AGRICULTURAL VALUE MENDOCINO COUNTY 2002



TOTAL \$126,953,300



TOTAL \$98,352,400

SUMMARY OF PRODUCTION

COMMODITY	2001	2002
FRUITS AND NUTS	* \$ 104,300,400	\$ 98,352,400
LIVESTOCK PRODUCTION	\$ 8,757,700	\$ 8,862,900
LIVESTOCK AND POULTRY PRODUCTS	\$ 6,478,600	\$ 6,079,600
NURSERY PRODUCTION	\$ 2,790,000	\$ 3,267,000
VEGETABLE CROPS	\$ 1,111,500	\$ 1,050,000
FIELD CROPS	\$ 8,316,600	\$ 9,341,400
FOREST PRODUCTS	\$ 80,072,500	\$ 53,942,500
TOTALS	* \$ 211,827,300	\$ 180,895,800

*2001 REVISED

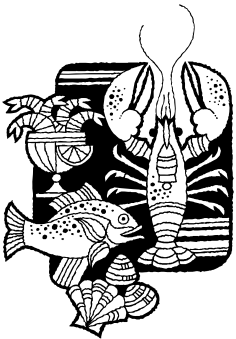
SUPPLEMENT TO CROP REPORT COMMERCIAL FISH CATCH

COMMODITY	YEAR	TOTAL LBS	TOTAL VALUE
URCHIN, RED	2002	4,417,893	\$ 2,849,377
	2001	3,659,677	\$ 3,065,872
SABLEFISH	2002	680,443	\$ 804,056
	2001	822,990	\$ 1,059,380
SALMON, CHINOOK	2002	1,111,959	\$ 1,723,430
	2001	376,760	\$ 745,052
CRAB, DUNGENESS	2002	191,293	\$ 353,739
	2001	306,664	\$ 712,877
SOLE, DOVER	2002	2,093,367	\$ 790,788
	2001	1,418,683	\$ 523,571
THORNYHEAD, LONGSPINE	2002	854,422	\$ 593,655
	2001	321,573	\$ 246,500
SOLE, PETRALE*	2002	154,547	\$ 143,508
	2001	67,499	\$ 68,725
THORNYHEAD, SHORTSPINE	2002	228,657	\$ 289,372
	2001	94,708	\$ 116,997
ROCKFISH, GROUP SLOPE*	2002	169,582	\$ 80,296
	2001	207,684	\$ 96,684
CABEZON*	2002	20,681	\$ 70,779
	2001	24,796	\$ 91,814
MICELLANEOUS	2002	743,760	\$ 561,477
	2001	1,089,861	\$ 761,063
TOTALS	2002	10,666,604	\$ 8,260,477
	2001	8,390,895	\$ 7,488,535

*Sole Petrale, Rockfish Group Slope, Cabezon made top 10 in 2002

COMMERCIAL FISH CATCH TEN YEAR VALUE COMPARISON

YEAR	POUNDS	VALUE
2002	10,666,604	\$ 8,260,477
2001	8,390,895	\$ 7,488,535
2000	9,138,022	\$ 8,430,200
1999	9,206,159	\$ 7,427,600
1998	9,437,912	\$ 6,111,000
1997	16,058,585	\$ 11,520,900
1996	12,371,000	\$ 9,070,000
1995	12,967,500	\$ 11,301,500
1994	12,975,000	\$ 9,158,500
1993	12,111,500	\$ 8,142,000



Source - State of California Department of Fish and Game
All figures are rounded - 2002 figures are preliminary

UKIAH 110 YEAR RAINFALL DATA (FROM UKIAH FIRE DEPARTMENT RECORDS)

<u>SEASON</u>	<u>TOTAL</u>	<u>SEASON</u>	<u>TOTAL</u>	<u>SEASON</u>	<u>TOTAL</u>
1892-93	43.53	1929-30	31.08	1966-67	43.16
1893-94	47.93	1930-31	20.06	1967-68	32.95
1894-95	52.55	1931-32	27.67	1968-69	51.28
1895-96	40.85	1932-33	24.71	1969-70	48.71
1896-97	43.34	1933-34	25.21	1970-71	38.31
1897-98	19.83	1934-35	33.05	1971-72	25.61
1898-99	27.60	1935-36	37.83	1972-73	42.09
1899-00	33.69	1936-37	29.24	1973-74	57.09
1900-01	37.09	1937-38	55.13	1974-75	38.60
1901-02	45.07	1938-39	22.86	1975-76	18.75
1902-03	34.55	1939-40	41.01	1976-77	14.20
1903-04	54.73	1940-41	56.92	1977-78	53.66
1904-05	42.93	1941-42	48.21	1978-79	30.23
1905-06	44.75	1942-43	40.41	1979-80	44.79
1906-07	48.64	1943-44	26.19	1980-81	26.82
1907-08	29.67	1944-45	31.74	1981-82	55.82
1908-09	57.39	1945-46	36.11	1982-83	70.19
1909-10	29.89	1946-47	25.90	1983-84	43.76
1910-11	32.99	1947-48	32.93	1984-85	27.40
1911-12	25.73	1948-49	27.53	1985-86	48.68
1912-13	33.40	1949-50	29.75	1986-87	25.25
1913-14	54.85	1950-51	42.28	1987-88	30.22
1914-15	49.28	1951-52	47.74	1988-89	31.48
1915-16	34.80	1952-53	45.06	1989-90	26.91
1916-17	30.23	1953-54	35.74	1990-91	26.00
1917-18	23.43	1954-55	25.63	1991-92	31.38
1918-19	37.23	1955-56	51.09	1992-93	50.49
1919-20	19.05	1956-57	32.36	1993-94	23.73
1920-21	47.94	1957-58	58.87	1994-95	58.88
1921-22	28.74	1958-59	26.42	1995-96	44.10
1922-23	30.35	1959-60	32.60	1996-97	39.07
1923-24	16.19	1960-61	34.89	1997-98	63.95
1924-25	47.44	1961-62	31.46	1998-99	34.77
1925-26	26.33	1962-63	44.45	1999-00	33.81
1926-27	47.32	1963-64	24.96	2000-01	26.68
1927-28	34.94	1964-65	50.84	2001-02	31.74
1928-29	24.44	1965-66	35.46		



FIVE YEAR VALUE COMPARISON

ALL COMMODITIES

YEAR	FRUIT/ NUTS	LIVESTOCK AND POULTRY			VEG PROD.	FIELD CROPS	TOTAL
		LIVESTOCK PRODUCTION	POULTRY PRODUCTS	NURSERY PROD.			
2002	\$98,352,400	\$8,862,900	\$6,079,600	\$3,267,000	\$1,050,000	\$9,341,400	\$126,953,300
2001 *	\$104,300,400	\$8,757,700	\$6,478,600	\$2,790,000	\$1,111,500	\$8,316,600	\$131,754,800
2000	\$102,451,800	\$6,430,700	\$5,387,700	\$2,550,000	\$950,000	\$10,801,900	\$128,572,100
1999	\$102,906,200	\$6,013,300	\$5,591,800	\$2,620,000	\$1,200,000	\$10,801,900	\$129,133,200
1998	\$97,808,900	\$7,597,400	\$7,156,800	\$2,685,000	\$1,657,500	\$10,768,500	\$127,674,100

*2001 Revised

TOP TEN GRAPE VARIETY VALUES 2002

VARIETY	TONS	VALUE PER TON	TOTAL VALUE
Chardonnay	19,321.2	\$1,170.39	\$22,613,339
Cabernet Sauvignon	7,191.4	\$1,900.48	\$13,667,111
Merlot	8,346.1	\$1,579.42	\$13,181,997
Zinfandel	7,459.7	\$1,411.11	\$10,526,457
Pinot Noir	4,174.8	\$1,778.84	\$7,426,301
Sauvignon Blanc	3,188.0	\$1,044.97	\$3,331,364
Syrah	1,607.7	\$1,600.55	\$2,573,204
Petite Sirah	952.3	\$1,883.69	\$1,793,838
Carignanne	1,610.4	\$769.88	\$1,239,815
Gewurtz	913.4	\$993.96	\$907,883

